

## ARG55664 anti-CD49f / Integrin alpha 6 antibody [129CT49.6.5]

Package: 100 µl  
Store at: -20°C

### Summary

Product Description	Mouse Monoclonal antibody recognizes CD49f / Integrin alpha 6
Tested Reactivity	Hu
Tested Application	FACS, IHC-P, WB
Host	Mouse
Clonality	Monoclonal
Clone	129CT49.6.5
Isotype	IgG1
Target Name	CD49f / Integrin alpha 6
Species	Human
Immunogen	Recombinant protein of Human Integrin alpha 6.
Conjugation	Un-conjugated
Alternate Names	CD49 antigen-like family member F; ITGA6B; Alpha6p; VLA-6; CD antigen CD49f; CD49f; Integrin alpha-6

### Application Instructions

Application table	Application	Dilution
	FACS	1:10 - 1:50
	IHC-P	1:10 - 1:50
	WB	1:100 - 1:16000
Application Note	* The dilutions indicate recommended starting dilutions and the optimal dilutions or concentrations should be determined by the scientist.	
Positive Control	HepG2	

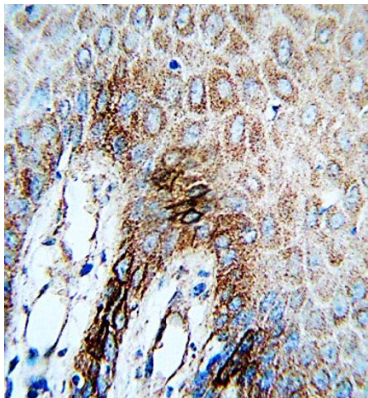
### Properties

Form	Liquid
Purification	Purification with Protein G.
Buffer	PBS and 0.09% (W/V) Sodium azide.
Preservative	0.09% (W/V) Sodium azide.
Storage instruction	For continuous use, store undiluted antibody at 2-8°C for up to a week. For long-term storage, aliquot and store at -20°C or below. Storage in frost free freezers is not recommended. Avoid repeated freeze/thaw cycles. Suggest spin the vial prior to opening. The antibody solution should be gently mixed before use.
Note	For laboratory research only, not for drug, diagnostic or other use.

Bioinformation

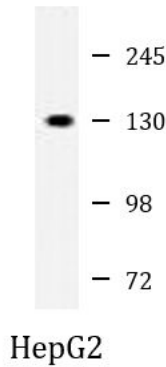
Database links	<a href="#">GeneID: 3655 Human</a> <a href="#">Swiss-port # P23229 Human</a>
Gene Symbol	ITGA6
Gene Full Name	integrin, alpha 6
Background	The ITGA6 protein product is the integrin alpha chain alpha 6. Integrins are integral cell-surface proteins composed of an alpha chain and a beta chain. A given chain may combine with multiple partners resulting in different integrins. For example, alpha 6 may combine with beta 4 in the integrin referred to as TSP180, or with beta 1 in the integrin VLA-6. Integrins are known to participate in cell adhesion as well as cell-surface mediated signalling. Two transcript variants encoding different isoforms have been found for this gene. [provided by RefSeq, Jul 2008]
Function	Integrin alpha-6/beta-1 is a receptor for laminin on platelets. Integrin alpha-6/beta-4 is a receptor for laminin in epithelial cells and it plays a critical structural role in the hemidesmosome. [UniProt]
Calculated Mw	127 kDa
PTM	Isoforms containing segment A, but not segment B, are the major targets for PMA-induced phosphorylation. Phosphorylation occurs on 'Ser-1103' of isoform alpha-6X1X2A. Phosphorylation is not required for the induction of integrin alpha-6A/beta-1 high affinity but may reduce the affinity for ligand. In invasive prostate cancer ITGA6 undergoes PLAU-mediated cleavage at residues Arg-634-635-Arg in a time-dependent manner enhancing cell invasion and migration in vitro. Palmitoylation by DHHC3 enhances stability and cell surface expression.
Cellular Localization	Cell membrane; Single-pass type I membrane protein Cell membrane; Lipid-anchor

Images



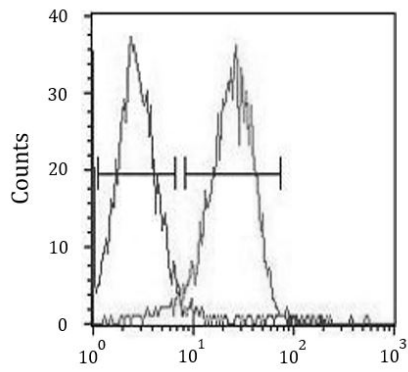
ARG55664 anti-CD49f / Integrin alpha 6 antibody IHC-P image

Immunohistochemistry: Formalin-fixed and paraffin-embedded Human skin carcinoma stained with ARG55664 anti-CD49f / Integrin alpha 6 antibody.



ARG55664 anti-CD49f / Integrin alpha 6 antibody WB image

Western blot: 35 µg of HepG2 cell lysate stained with ARG55664 anti-CD49f / Integrin alpha 6 antibody.



#### ARG55664 anti-CD49f / Integrin alpha 6 antibody FACS image

Flow Cytometry: HepG2 cells stained with ARG55664 anti-CD49f / Integrin alpha 6 antibody (right histogram) or without primary antibody as control (left histogram), followed by incubation with PE labelled secondary antibody.