

ARG55671
anti-N-Ras antibody [822CT17.5.1]Package: 100 µl
Store at: -20°C

Summary

Product Description	Mouse Monoclonal antibody recognizes N-Ras
Tested Reactivity	Hu, Rat
Tested Application	WB
Host	Mouse
Clonality	Monoclonal
Clone	822CT17.5.1
Isotype	IgG1
Target Name	N-Ras
Species	Human
Immunogen	KLH-conjugated synthetic peptide corresponding to aa. 70-101 of Human N-Ras.
Conjugation	Un-conjugated
Alternate Names	GTPase NRas; N-ras; NRAS1; CMNS; Transforming protein N-Ras; NCMS; ALPS4; NS6

Application Instructions

Application table	Application	Dilution
	WB	1:1000
Application Note	* The dilutions indicate recommended starting dilutions and the optimal dilutions or concentrations should be determined by the scientist.	
Positive Control	A431	

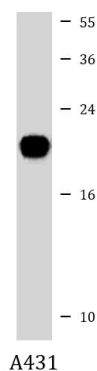
Properties

Form	Liquid
Purification	Purification with Protein G.
Buffer	PBS and 0.09% (W/V) Sodium azide.
Preservative	0.09% (W/V) Sodium azide.
Storage instruction	For continuous use, store undiluted antibody at 2-8°C for up to a week. For long-term storage, aliquot and store at -20°C or below. Storage in frost free freezers is not recommended. Avoid repeated freeze/thaw cycles. Suggest spin the vial prior to opening. The antibody solution should be gently mixed before use.
Note	For laboratory research only, not for drug, diagnostic or other use.

Bioinformation

Database links	GeneID: 24605 Rat GeneID: 4893 Human Swiss-port # P01111 Human Swiss-port # Q04970 Rat
Gene Symbol	NRAS
Gene Full Name	neuroblastoma RAS viral (v-ras) oncogene homolog
Background	This is an N-ras oncogene encoding a membrane protein that shuttles between the Golgi apparatus and the plasma membrane. This shuttling is regulated through palmitoylation and depalmitoylation by the ZDHHC9-GOLGA7 complex. The encoded protein, which has intrinsic GTPase activity, is activated by a guanine nucleotide-exchange factor and inactivated by a GTPase activating protein. Mutations in this gene have been associated with somatic rectal cancer, follicular thyroid cancer, autoimmune lymphoproliferative syndrome, Noonan syndrome, and juvenile myelomonocytic leukemia. [provided by RefSeq, Jun 2011]
Function	Ras proteins bind GDP/GTP and possess intrinsic GTPase activity. [UniProt]
Calculated Mw	21 kDa
PTM	Palmitoylated by the ZDHHC9-GOLGA7 complex. A continuous cycle of de- and re-palmitoylation regulates rapid exchange between plasma membrane and Golgi. Acetylation at Lys-104 prevents interaction with guanine nucleotide exchange factors (GEFs).
Cellular Localization	Cell membrane; Lipid-anchor; Cytoplasmic side. Golgi apparatus membrane; Lipid-anchor. Note=Shuttles between the plasma membrane and the Golgi apparatus

Images



ARG55671 anti-N-Ras antibody WB image

Western blot: 35 µg of A431 cell lysate stained with ARG55671 anti-N-Ras antibody.