

## ARG55684 anti-NPM1 / Nucleophosmin antibody

Package: 100 µl, 50 µl  
Store at: -20°C

### Summary

Product Description	Rabbit Polyclonal antibody recognizes NPM1 / Nucleophosmin
Tested Reactivity	Hu
Tested Application	FACS, ICC/IF, IHC-P, WB
Host	Rabbit
Clonality	Polyclonal
Isotype	IgG
Target Name	NPM1 / Nucleophosmin
Species	Human
Immunogen	KLH-conjugated synthetic peptide corresponding to aa. 198-226 (C-terminus) of Human NPM1.
Conjugation	Un-conjugated
Alternate Names	NPM; Nucleolar protein NO38; B23; Nucleophosmin; Numatrin; Nucleolar phosphoprotein B23

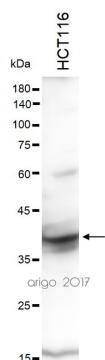
### Application Instructions

Application table	Application	Dilution
	FACS	1:10 - 1:50
	ICC/IF	1:10 - 1:50
	IHC-P	1:10 - 1:50
	WB	1:1000
Application Note	* The dilutions indicate recommended starting dilutions and the optimal dilutions or concentrations should be determined by the scientist.	

### Properties

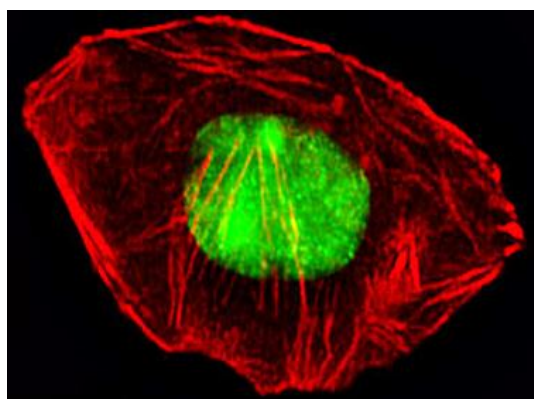
Form	Liquid
Purification	This antibody is prepared by Saturated Ammonium Sulfate (SAS) precipitation followed by dialysis against PBS.
Buffer	PBS and 0.09% (W/V) Sodium azide.
Preservative	0.09% (W/V) Sodium azide.
Storage instruction	For continuous use, store undiluted antibody at 2-8°C for up to a week. For long-term storage, aliquot and store at -20°C or below. Storage in frost free freezers is not recommended. Avoid repeated freeze/thaw cycles. Suggest spin the vial prior to opening. The antibody solution should be gently mixed before use.
Note	For laboratory research only, not for drug, diagnostic or other use.

Database links	<a href="#">GeneID: 4869 Human</a> <a href="#">Swiss-port # P06748 Human</a>
Gene Symbol	NPM1
Gene Full Name	nucleophosmin (nucleolar phosphoprotein B23, numatrin)
Background	<p>This gene encodes a phosphoprotein which moves between the nucleus and the cytoplasm. The gene product is thought to be involved in several processes including regulation of the ARF/p53 pathway. A number of genes are fusion partners have been characterized, in particular the anaplastic lymphoma kinase gene on chromosome 2. Mutations in this gene are associated with acute myeloid leukemia. More than a dozen pseudogenes of this gene have been identified. Alternative splicing results in multiple transcript variants.[provided by RefSeq, Nov 2009]</p>
Function	<p>Involved in diverse cellular processes such as ribosome biogenesis, centrosome duplication, protein chaperoning, histone assembly, cell proliferation, and regulation of tumor suppressors p53/TP53 and ARF. Binds ribosome presumably to drive ribosome nuclear export. Associated with nucleolar ribonucleoprotein structures and bind single-stranded nucleic acids. Acts as a chaperonin for the core histones H3, H2B and H4. Stimulates APEX1 endonuclease activity on apurinic/aprimidinic (AP) double-stranded DNA but inhibits APEX1 endonuclease activity on AP single-stranded RNA. May exert a control of APEX1 endonuclease activity within nucleoli devoted to repair AP on rDNA and the removal of oxidized rRNA molecules. In concert with BRCA2, regulates centrosome duplication. Regulates centriole duplication: phosphorylation by PLK2 is able to trigger centriole replication. Negatively regulates the activation of EIF2AK2/PKR and suppresses apoptosis through inhibition of EIF2AK2/PKR autophosphorylation. [UniProt]</p>
Highlight	<p>Related Antibody Duos and Panels:  <a href="#">ARG30303 Nucleolar Marker Antibody Duo</a>            Related products:  <a href="#">NPM1 antibodies</a>; <a href="#">NPM1 Duos / Panels</a>; <a href="#">Anti-Rabbit IgG secondary antibodies</a>;</p>
Research Area	Nucleolar Marker antibody; GC Marker antibody; Granular Component Marker antibody
Calculated Mw	33 kDa
PTM	<p>Acetylated at C-terminal lysine residues, thereby increasing affinity to histones.            ADP-ribosylated.            Phosphorylated at Ser-4 by PLK1 and PLK2. Phosphorylation at Ser-4 by PLK2 in S phase is required for centriole duplication and is sufficient to trigger centriole replication. Phosphorylation at Ser-4 by PLK1 takes place during mitosis. Phosphorylated by CDK2 at Ser-125 and Thr-199. Phosphorylation at Thr-199 may trigger initiation of centrosome duplication. Phosphorylated by CDK1 at Thr-199, Thr-219, Thr-234 and Thr-237 during cell mitosis. When these four sites are phosphorylated, RNA-binding activity seem to be abolished. May be phosphorylated at Ser-70 by NEK2. The Thr-199 phosphorylated form has higher affinity for ROCK2. CDK6 triggers Thr-199 phosphorylation when complexed to Kaposi's sarcoma herpesvirus (KSHV) V-cyclin, leading to viral reactivation by reducing viral LANA levels.            Sumoylated by ARF.            May be ubiquitinated. Ubiquitination leads to proteasomal degradation.</p>
Cellular Localization	Cytoplasm, Cytoskeleton, Nucleus



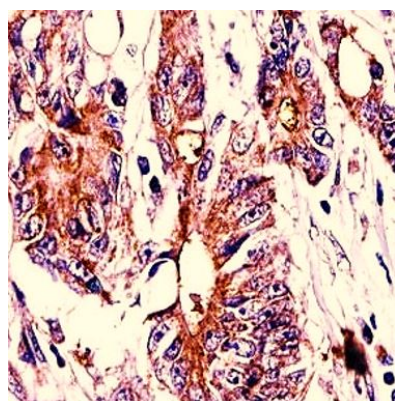
ARG55684 anti-NPM1 / Nucleophosmin antibody WB image

Western blot: 30 µg of HCT116 cell lysate stained with ARG55684 anti-NPM1 / Nucleophosmin antibody at 1:1000 dilution.



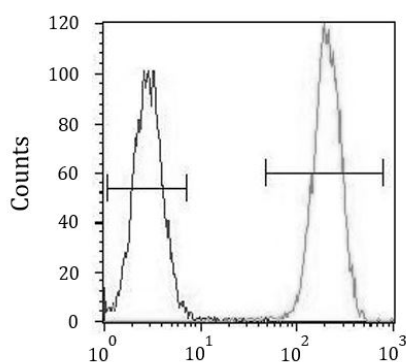
ARG55684 anti-NPM1 / Nucleophosmin antibody ICC/IF image

Immunofluorescence: A549 cells were fixed with 4% PFA (20 min), permeabilized with Triton X-100 (0.1%, 10 min), then stained with ARG55684 anti-NPM1 / Nucleophosmin antibody (green) at 1:25 dilution, 1 hour at 37°C. Cytoplasmic actin was counterstained with Alexa Fluor® 555 (red) conjugated Phalloidin (7 units/ml, 1 hour at 37°C).



ARG55684 anti-NPM1 / Nucleophosmin antibody IHC-P image

Immunohistochemistry: Formalin-fixed and paraffin-embedded Human colon carcinoma stained with ARG55684 anti-NPM1 / Nucleophosmin antibody.



ARG55684 anti-NPM1 / Nucleophosmin antibody FACS image

Flow Cytometry: HeLa cells stained with ARG55684 anti-NPM1 / Nucleophosmin antibody (right histogram) or without primary antibody as control (left histogram), followed by incubation with FITC labelled secondary antibody.