

## ARG55712 anti-CD56 / NCAM antibody

Package: 100 µl  
Store at: -20°C

### Summary

Product Description	Rabbit Polyclonal antibody recognizes CD56 / NCAM
Tested Reactivity	Hu
Tested Application	FACS, IHC-P, WB
Host	Rabbit
Clonality	Polyclonal
Isotype	IgG
Target Name	CD56 / NCAM
Species	Human
Immunogen	KLH-conjugated synthetic peptide corresponding to aa. 796-830 (C-terminus) of Human CD56.
Conjugation	Un-conjugated
Alternate Names	CD56; NCAM; CD antigen CD56; N-CAM-1; MSK39; NCAM-1; Neural cell adhesion molecule 1

### Application Instructions

Application table	Application	Dilution
	FACS	1:25
	IHC-P	1:25
	WB	1:1000
Application Note	* The dilutions indicate recommended starting dilutions and the optimal dilutions or concentrations should be determined by the scientist.	
Positive Control	SW480	

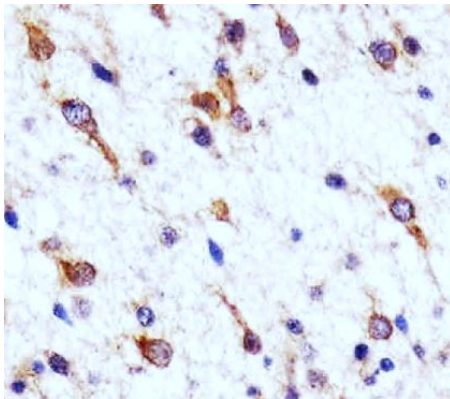
### Properties

Form	Liquid
Purification	Purification with Protein A and immunogen peptide.
Buffer	PBS and 0.09% (W/V) sodium azide.
Preservative	0.09% (W/V) sodium azide.
Storage instruction	For continuous use, store undiluted antibody at 2-8°C for up to a week. For long-term storage, aliquot and store at -20°C or below. Storage in frost free freezers is not recommended. Avoid repeated freeze/thaw cycles. Suggest spin the vial prior to opening. The antibody solution should be gently mixed before use.
Note	For laboratory research only, not for drug, diagnostic or other use.

## Bioinformation

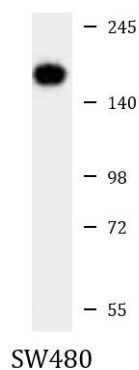
Database links	<a href="#">GeneID: 4684 Human</a> <a href="#">Swiss-port # P13591 Human</a>
Gene Symbol	NCAM1
Gene Full Name	neural cell adhesion molecule 1
Background	This gene encodes a cell adhesion protein which is a member of the immunoglobulin superfamily. The encoded protein is involved in cell-to-cell interactions as well as cell-matrix interactions during development and differentiation. The encoded protein has been shown to be involved in development of the nervous system, and for cells involved in the expansion of T cells and dendritic cells which play an important role in immune surveillance. Alternative splicing results in multiple transcript variants. [provided by RefSeq, Jun 2011]
Function	This protein is a cell adhesion molecule involved in neuron-neuron adhesion, neurite fasciculation, outgrowth of neurites, etc. [UniProt]
Highlight	Related products: <a href="#">CD56 antibodies</a> ; <a href="#">CD56 ELISA Kits</a> ; <a href="#">CD56 Duos / Panels</a> ; <a href="#">Anti-Rabbit IgG secondary antibodies</a> ; Related news: <a href="#">Tumor-Infiltrating Lymphocytes (TILs)</a>
Research Area	Developmental Biology antibody; Neuroscience antibody; General Lymphocyte Marker Study antibody; Natural killer cells antibody
Calculated Mw	95 kDa
Cellular Localization	Isoform 1: Cell membrane; Single-pass type I membrane protein Isoform 3: Cell membrane; Lipid-anchor, GPI- anchor Isoform 5: Secreted.

## Images



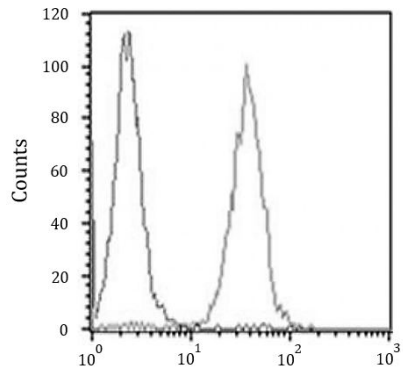
ARG55712 anti-CD56 / NCAM antibody IHC-P image

Immunohistochemistry: Paraffin-embedded Human astroglioma tissue stained with ARG55712 anti-CD56 / NCAM antibody at 1:25 dilution.



ARG55712 anti-CD56 / NCAM antibody WB image

Western blot: 20 µg of SW480 cell lysate stained with ARG55712 anti-CD56 / NCAM antibody at 1:1000 dilution.



#### ARG55712 anti-CD56 / NCAM antibody FACS image

Flow Cytometry: SH-SY5Y cells stained with ARG55712 anti-CD56 / NCAM antibody (right histogram) at 1:25 dilution or isotype control antibody (left histogram), followed by incubation with Alexa Fluor® 488 labelled secondary antibody.