

## ARG55723 anti-mCherry antibody

Package: 100 µg  
Store at: -20°C

### Summary

Product Description	Goat Polyclonal antibody recognizes mCherry
Tested Reactivity	Other
Tested Application	ICC/IF, IHC-Fr, IHC-P, IHC-Wmt, WB
Specificity	This antibody recognizes mCherry, red fluorescent protein (dsRed) and tdTomato. It does not cross-react to GFP.
Host	Goat
Clonality	Polyclonal
Isotype	IgG
Target Name	mCherry
Immunogen	Purified recombinant peptide produced in E. coli
Conjugation	Un-conjugated
Alternate Names	Cherry fluorescent protein; dsRed; red fluorescent protein; tdTomato

### Application Instructions

Application table	Application	Dilution
	ICC/IF	1:50-1:500
	IHC-Fr	1:50-1:500
	IHC-P	1:50-1:500
	IHC-Wmt	Assay-dependent
	WB	1:500-1:2000
Application Note	* The dilutions indicate recommended starting dilutions and the optimal dilutions or concentrations should be determined by the scientist.	

### Properties

Form	Liquid
Purification	Affinity purification with immunogen.
Buffer	PBS, 0.05% Sodium azide and 20% Glycerol
Preservative	0.05% Sodium azide
Stabilizer	20% Glycerol
Concentration	3 mg/ml
Storage instruction	For continuous use, store undiluted antibody at 2-8°C for up to a week. For long-term storage, aliquot and store at -20°C. Storage in frost free freezers is not recommended. Avoid repeated freeze/thaw

cycles. Suggest spin the vial prior to opening. The antibody solution should be gently mixed before use.

#### Note

For laboratory research only, not for drug, diagnostic or other use.

## Bioinformation

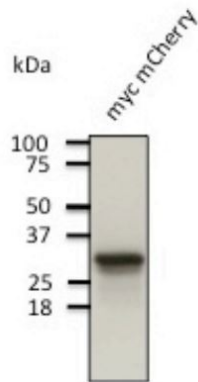
---

### Background

mCherry protein is derived from DsRed, an engineered red fluorescent protein from so-called discorals of the genus *Discosoma*.

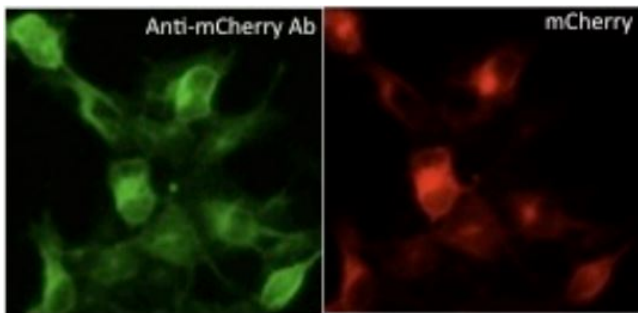
## Images

---



ARG55723 anti-mCherry antibody WB image

Western blot: 100 µg of 293HEK cells transduced with myc-mCherry Ad and stained with ARG55723 anti-mCherry antibody at 1:1000 dilution.



ARG55723 anti-mCherry antibody ICC/IF image

Immunocytochemistry: 293HEK cells transfected with mCherry-Rab1a and stained with ARG55723 anti-mCherry antibody at 1:50 dilution. Cells were fixed with 4% of PFA.