

ARG55740 anti-RAB27A antibody

Package: 100 µg
Store at: -20°C

Summary

Product Description	Goat Polyclonal antibody recognizes RAB27A
Tested Reactivity	Hu, Ms, Rat, Dog, Mk
Tested Application	ICC/IF, IHC-Fr, IHC-P, WB
Specificity	Detects Rab27a by Western blot in the following human, rat and mouse whole cell lysates and transfected cells with GFP-Rab27a.
Host	Goat
Clonality	Polyclonal
Isotype	IgG
Target Name	RAB27A
Species	Mouse
Immunogen	Purified recombinant peptide around aa. 120 (C-terminus) of Mouse Rab27a
Conjugation	Un-conjugated
Alternate Names	ash; Ras-related protein Rab-27A

Application Instructions

Application table	Application	Dilution
	ICC/IF	1:50-1:200
	IHC-Fr	1:50-1:200
	IHC-P	1:50-1:200
	WB	1:250-1:1000
Application Note	IHC-P: Antigen retrieval: Heat-induced. * The dilutions indicate recommended starting dilutions and the optimal dilutions or concentrations should be determined by the scientist.	

Properties

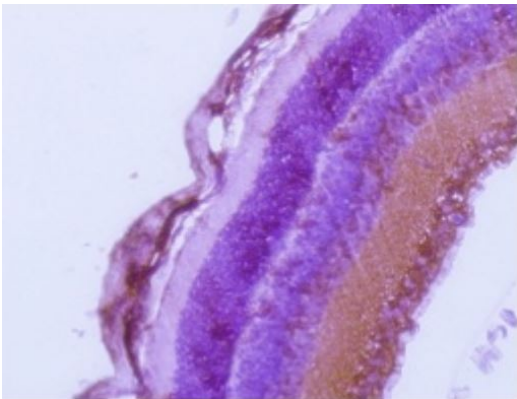
Form	Liquid
Purification	Affinity purification with immunogen.
Buffer	PBS, 0.05% Sodium azide and 20% Glycerol
Preservative	0.05% Sodium azide
Stabilizer	20% Glycerol
Concentration	1 mg/ml

Storage instruction	For continuous use, store undiluted antibody at 2-8°C for up to a week. For long-term storage, aliquot and store at -20°C. Storage in frost free freezers is not recommended. Avoid repeated freeze/thaw cycles. Suggest spin the vial prior to opening. The antibody solution should be gently mixed before use.
Note	For laboratory research only, not for drug, diagnostic or other use.

Bioinformation

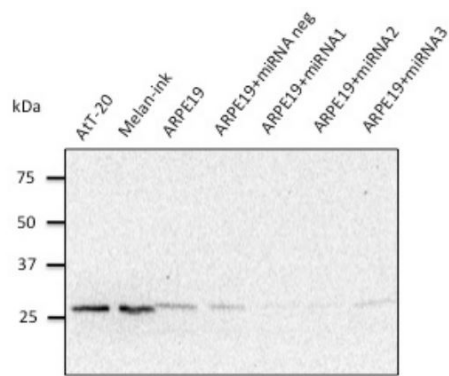
Gene Symbol	Rab27a
Gene Full Name	RAB27A, member RAS oncogene family
Background	The protein encoded by this gene is a member of the Rab family of proteins, which is the largest family within the Ras superfamily of GTPases. This gene product is thought to regulate vesicular transport, together with its specific effectors. Mutations in this gene cause several defects, including actin-based melanosome transport defects and immunodeficiency. Mutations in the human ortholog of this gene are associated with Griscelli syndrome type 2. Alternative splicing results in multiple transcript variants. [provided by RefSeq, Jul 2014]
Function	Plays a role in cytotoxic granule exocytosis in lymphocytes. Required for both granule maturation and granule docking and priming at the immunologic synapse (By similarity). [UniProt]
Calculated Mw	25 kDa

Images



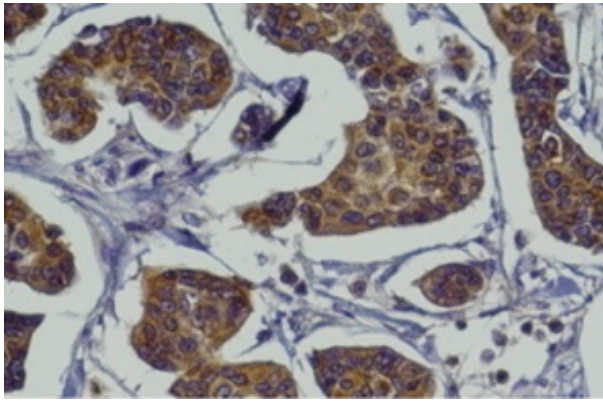
ARG55740 anti-RAB27A antibody IHC-P image

Immunohistochemistry: Formalin-fixed and paraffin-embedded albino mouse retina stained with ARG55740 anti-RAB27A antibody at 1:200 dilution. Antigen retrieval: Heat-induced.



ARG55740 anti-RAB27A antibody WB image

Western blot: 1) AtT-20, 2) Melan-ink, 3) ARPE19, 4) ARPE19 + miRNA neg, 5) ARPE19 + miRNA1, 6) ARPE19 + miRNA2, and 7) ARPE19 + miRNA3 stained with ARG55740 anti-RAB27A antibody at 1:500 dilution.



ARG55740 anti-RAB27A antibody IHC-P image

Immunohistochemistry: Formalin-fixed and paraffin-embedded mammary tissue stained with ARG55740 anti-RAB27A antibody at 1:200 dilution. Antigen retrieval: Heat-induced.