

ARG55741 anti-Albumin antibody

Package: 100 µg
Store at: -20°C

Summary

Product Description	Goat Polyclonal antibody recognizes Albumin
Tested Reactivity	Hu, Ms, Rat, Dog, Mk
Tested Application	WB
Specificity	Using serum samples detects a band around 66 kDa by Western blot.
Host	Goat
Clonality	Polyclonal
Isotype	IgG
Target Name	Albumin
Species	Human
Immunogen	Purified full length native Human Albumin
Conjugation	Un-conjugated
Alternate Names	FDAH; PRO0883; PRO1341; Serum albumin; ANALBA; PRO0903; HSA

Application Instructions

Application table	Application	Dilution
	WB	1:500-1:5000
Application Note	* The dilutions indicate recommended starting dilutions and the optimal dilutions or concentrations should be determined by the scientist.	

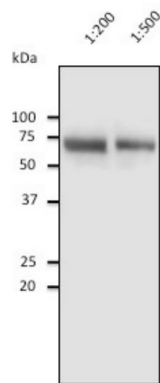
Properties

Form	Liquid
Purification	Affinity purification with immunogen.
Buffer	PBS, 0.05% Sodium azide and 20% Glycerol
Preservative	0.05% Sodium azide
Stabilizer	20% Glycerol
Concentration	3 mg/ml
Storage instruction	For continuous use, store undiluted antibody at 2-8°C for up to a week. For long-term storage, aliquot and store at -20°C. Storage in frost free freezers is not recommended. Avoid repeated freeze/thaw cycles. Suggest spin the vial prior to opening. The antibody solution should be gently mixed before use.
Note	For laboratory research only, not for drug, diagnostic or other use.

Bioinformation

Gene Symbol	ALB
Gene Full Name	albumin
Background	<p>Albumin is a soluble, monomeric protein which comprises about one-half of the blood serum protein. Albumin functions primarily as a carrier protein for steroids, fatty acids, and thyroid hormones and plays a role in stabilizing extracellular fluid volume. Albumin is a globular unglycosylated serum protein of molecular weight 65,000. Albumin is synthesized in the liver as preproalbumin which has an N-terminal peptide that is removed before the nascent protein is released from the rough endoplasmic reticulum. The product, proalbumin, is in turn cleaved in the Golgi vesicles to produce the secreted albumin. [provided by RefSeq, Jul 2008]</p>
Function	<p>Serum albumin, the main protein of plasma, has a good binding capacity for water, Ca(2+), Na(+), K(+), fatty acids, hormones, bilirubin and drugs. Its main function is the regulation of the colloidal osmotic pressure of blood. Major zinc transporter in plasma, typically binds about 80% of all plasma zinc. [UniProt]</p>
Calculated Mw	69 kDa
PTM	<p>Kenitra variant is partially O-glycosylated at Thr-620. It has two new disulfide bonds Cys-600 to Cys-602 and Cys-601 to Cys-606.</p> <p>Glycated in diabetic patients.</p> <p>Phosphorylated by FAM20C in the extracellular medium.</p> <p>Acetylated on Lys-223 by acetylsalicylic acid.</p>

Images



ARG55741 anti-Albumin antibody WB image

Western blot: 10 ul of diluted Human serum (1:200 for Lane1, 1:500 for Lane2) stained with ARG55741 anti-Albumin antibody at 1:2500 dilution.