

**ARG55786**  
**anti-RPL9 antibody**Package: 100 µl  
Store at: -20°C

### Summary

|                     |  |
|---------------------|--|
| Product Description | Rabbit Polyclonal antibody recognizes RPL9 |
| Tested Reactivity   | Hu, Ms                                     |
| Tested Application  | ICC/IF, WB                                 |
| Host                | Rabbit                                     |
| Clonality           | Polyclonal                                 |
| Isotype             | IgG  |
| Target Name         | RPL9                                       |
| Species             | Human                                      |
| Immunogen           | Recombinant protein of Human RPL9          |
| Conjugation         | Un-conjugated                              |
| Alternate Names     | 60S ribosomal protein L9; NPC-A-16; L9     |

### Application Instructions

| Predict Reactivity Note | Rat   |             |          |        |              |    |                |
|-------------------------|---|-------------|----------|--------|--------------|----|----------------|
| Application table       | <table><tr><th>Application</th><th>Dilution</th></tr><tr><td>ICC/IF</td><td>1:50 - 1:200</td></tr><tr><td>WB</td><td>1:500 - 1:2000</td></tr></table> | Application | Dilution | ICC/IF | 1:50 - 1:200 | WB | 1:500 - 1:2000 |
| Application             | Dilution  |             |          |        |              |    |                |
| ICC/IF                  | 1:50 - 1:200  |             |          |        |              |    |                |
| WB                      | 1:500 - 1:2000  |             |          |        |              |    |                |
| Application Note        | * The dilutions indicate recommended starting dilutions and the optimal dilutions or concentrations should be determined by the scientist.            |             |          |        |              |    |                |
| Positive Control        | HeLa  |             |          |        |              |    |                |
| Observed Size           | ~ 24 kDa  |             |          |        |              |    |                |

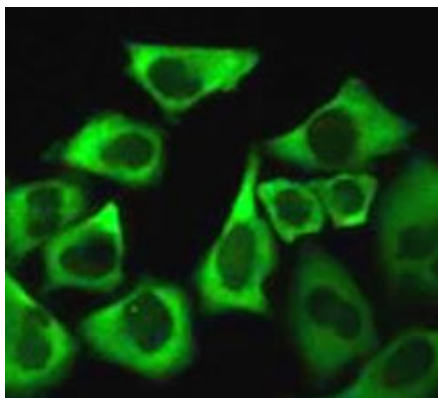
### Properties

|                     |   |
|---------------------|---|
| Form                | Liquid  |
| Purification        | Affinity purification with immunogen.   |
| Buffer              | PBS (pH 7.3), 0.02% Sodium azide and 50% Glycerol.  |
| Preservative        | 0.02% Sodium azide  |
| Stabilizer          | 50% Glycerol  |
| Storage instruction | For continuous use, store undiluted antibody at 2-8°C for up to a week. For long-term storage, aliquot and store at -20°C. Storage in frost free freezers is not recommended. Avoid repeated freeze/thaw cycles. Suggest spin the vial prior to opening. The antibody solution should be gently mixed before use. |

## Bioinformation

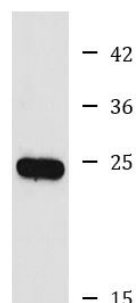
|                |   |
|----------------|---|
| Database links | <a href="#">GeneID: 20005 Mouse</a>   |
|                | <a href="#">GeneID: 6133 Human</a>  |
|                | <a href="#">Swiss-port # P32969 Human</a>   |
|                | <a href="#">Swiss-port # P51410 Mouse</a>   |
| Gene Symbol    | RPL9  |
| Gene Full Name | ribosomal protein L9  |
| Background     | Ribosomes, the organelles that catalyze protein synthesis, consist of a small 40S subunit and a large 60S subunit. Together these subunits are composed of 4 RNA species and approximately 80 structurally distinct proteins. This gene encodes a ribosomal protein that is a component of the 60S subunit. The protein belongs to the L6P family of ribosomal proteins. It is located in the cytoplasm. As is typical for genes encoding ribosomal proteins, there are multiple processed pseudogenes of this gene dispersed through the genome. Two alternatively spliced transcript variants encoding the same protein have been found for this gene. [provided by RefSeq, Jul 2008] |
| Calculated Mw  | 22 kDa  |

## Images



ARG55786 anti-RPL9 antibody ICC/IF image

Immunofluorescence: MCF-7 cells stained with ARG55786 anti-RPL9 antibody.



HeLa

ARG55786 anti-RPL9 antibody WB image

Western blot: HeLa cell lysate stained with ARG55786 anti-RPL9 antibody.