

ARG55788 anti-BLVRB antibody

Package: 100 µl
Store at: -20°C

Summary

Product Description	Rabbit Polyclonal antibody recognizes BLVRB
Tested Reactivity	Hu, Ms, Rat
Tested Application	IHC-P, WB
Host	Rabbit
Clonality	Polyclonal
Isotype	IgG
Target Name	BLVRB
Species	Human
Immunogen	Recombinant protein of Human BLVRB (NP_000704.1)
Conjugation	Un-conjugated
Alternate Names	FLR; BVRB; SDR43U1; HEL-S-10; Flavin reductase (NADPH); FR; EC 1.5.1.30; Biliverdin reductase B; BVR-B; EC 1.3.1.24; Biliverdin-IX beta-reductase; Green heme-binding protein; GHBP; NADPH-dependent diaphorase; NADPH-flavin reductase; FLR

Application Instructions

Application table	Application	Dilution
	IHC-P	1:50 - 1:200
	WB	1:500 - 1:2000
Application Note	* The dilutions indicate recommended starting dilutions and the optimal dilutions or concentrations should be determined by the scientist.	
Positive Control	MCF7	
Observed Size	~ 22 kDa	

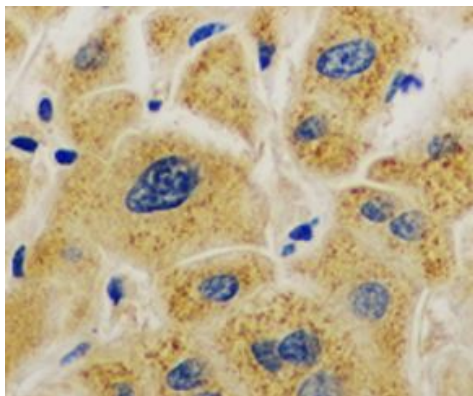
Properties

Form	Liquid
Purification	Affinity purification with immunogen.
Buffer	PBS (pH 7.3), 0.02% Sodium azide and 50% Glycerol.
Preservative	0.02% Sodium azide
Stabilizer	50% Glycerol
Storage instruction	For continuous use, store undiluted antibody at 2-8°C for up to a week. For long-term storage, aliquot and store at -20°C. Storage in frost free freezers is not recommended. Avoid repeated freeze/thaw cycles. Suggest spin the vial prior to opening. The antibody solution should be gently mixed before use.

Bioinformation

Database links	GeneID: 233016 Mouse GeneID: 645 Human Swiss-port # P30043 Human Swiss-port # Q923D2 Mouse
Gene Symbol	BLVRB
Gene Full Name	biliverdin reductase B
Background	The final step in heme metabolism in mammals is catalyzed by the cytosolic biliverdin reductase enzymes A and B (EC 1.3.1.24).[supplied by OMIM, Jul 2009]
Function	Broad specificity oxidoreductase that catalyzes the NADPH-dependent reduction of a variety of flavins, such as riboflavin, FAD or FMN, biliverdins, methemoglobin and PQQ (pyrroloquinoline quinone). Contributes to heme catabolism and metabolizes linear tetrapyrroles. Can also reduce the complexed Fe(3+) iron to Fe(2+) in the presence of FMN and NADPH. In the liver, converts biliverdin to bilirubin. [UniProt]
Calculated Mw	22 kDa

Images



ARG55788 anti-BLVRB antibody IHC-P image

Immunohistochemistry: Paraffin-embedded Human liver cancer tissue stained with ARG55788 anti-BLVRB antibody at 1:100 dilution.



ARG55788 anti-BLVRB antibody WB image

Western blot: MCF7 cell lysate stained with ARG55788 anti-BLVRB antibody.