

ARG55810 anti-TUFM antibody

Package: 100 µl
Store at: -20°C

Summary

Product Description	Rabbit Polyclonal antibody recognizes TUFM
Tested Reactivity	Hu, Ms, Rat
Tested Application	ICC/IF, IHC-P, IP, WB
Host	Rabbit
Clonality	Polyclonal
Isotype	IgG
Target Name	TUFM
Species	Human
Immunogen	Recombinant protein of Human TUFM (NP_003312.3)
Conjugation	Un-conjugated
Alternate Names	P43; EF-TuMT; Elongation factor Tu, mitochondrial; EF-Tu; COXPD4; EFTU

Application Instructions

Application table	Application	Dilution
	ICC/IF	1:50 - 1:200
	IHC-P	1:50 - 1:200
	IP	1:50 - 1:200
	WB	1:500 - 1:2000
Application Note	* The dilutions indicate recommended starting dilutions and the optimal dilutions or concentrations should be determined by the scientist.	
Positive Control	HeLa and Mouse liver	

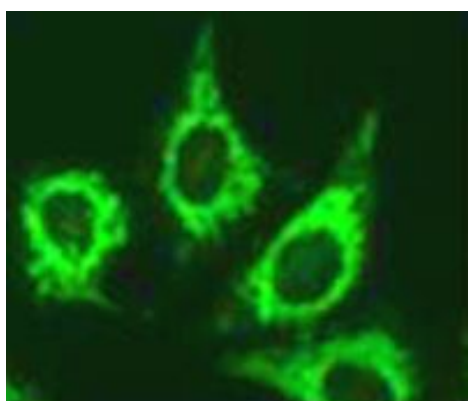
Properties

Form	Liquid
Purification	Affinity purification with immunogen.
Buffer	PBS (pH 7.3), 0.02% Sodium azide and 50% Glycerol.
Preservative	0.02% Sodium azide
Stabilizer	50% Glycerol
Storage instruction	For continuous use, store undiluted antibody at 2-8°C for up to a week. For long-term storage, aliquot and store at -20°C. Storage in frost free freezers is not recommended. Avoid repeated freeze/thaw cycles. Suggest spin the vial prior to opening. The antibody solution should be gently mixed before use.

Bioinformation

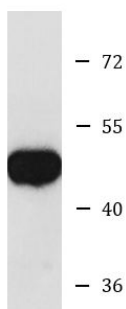
Gene Symbol	TUFM
Gene Full Name	Tu translation elongation factor, mitochondrial
Background	This gene encodes a protein which participates in protein translation in mitochondria. Mutations in this gene have been associated with combined oxidative phosphorylation deficiency resulting in lactic acidosis and fatal encephalopathy. A pseudogene has been identified on chromosome 17. [provided by RefSeq, Jul 2008]
Function	This protein promotes the GTP-dependent binding of aminoacyl-tRNA to the A-site of ribosomes during protein biosynthesis. [UniProt]
Calculated Mw	50 kDa

Images



ARG55810 anti-TUFM antibody ICC/IF image

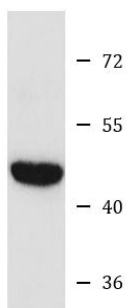
Immunofluorescence: U2OS cells stained with ARG55810 anti-TUFM antibody.



HeLa

ARG55810 anti-TUFM antibody WB image

Western blot: HeLa cell lysate stained with ARG55810 anti-TUFM antibody.



Mouse liver

ARG55810 anti-TUFM antibody WB image

Western blot: Mouse liver lysate stained with ARG55810 anti-TUFM antibody.