

ARG55820 anti-Bcl 10 antibody [1185CT13.2.1.2]

Package: 100 µl
Store at: -20°C

Summary

| | |
|---------------------|--|
| Product Description | Mouse Monoclonal antibody recognizes Bcl 10 |
| Tested Reactivity | Hu |
| Tested Application | FACS, IHC-P, WB |
| Host | Mouse |
| Clonality | Monoclonal |
| Clone | 1185CT13.2.1.2 |
| Isotype | IgG1, kappa |
| Target Name | Bcl 10 |
| Species | Human |
| Immunogen | KLH-conjugated synthetic peptide corresponding to aa. 1-143 of Human Bcl 10. |
| Conjugation | Un-conjugated |
| Alternate Names | B-cell CLL/lymphoma 10; Cellular homolog of vCARMEN; cCARMEN; IMD37; CIPER; c-E10; Mammalian CARD-containing adapter molecule E10; Bcl-10; CED-3/ICH-1 prodomain homologous E10-like regulator; mE10; CARD-containing molecule enhancing NF-kappa-B; B-cell lymphoma/leukemia 10; hCLAP; Cellular-E10; CARMEN; CLAP; CARD-like apoptotic protein |

Application Instructions

| Application table | Application | Dilution |
|-------------------|--|----------|
| | FACS | 1:25 |
| | IHC-P | 1:25 |
| | WB | 1:2000 |
| | | |
| Application Note | * The dilutions indicate recommended starting dilutions and the optimal dilutions or concentrations should be determined by the scientist. | |
| Positive Control | Daudi | |

Properties

| | |
|---------------------|--|
| Form | Liquid |
| Purification | Purification with Protein G. |
| Buffer | PBS and 0.09% (W/V) Sodium azide |
| Preservative | 0.09% (W/V) Sodium azide |
| Storage instruction | For continuous use, store undiluted antibody at 2-8°C for up to a week. For long-term storage, aliquot and store at -20°C or below. Storage in frost free freezers is not recommended. Avoid repeated freeze/thaw cycles. Suggest spin the vial prior to opening. The antibody solution should be gently mixed |

before use.

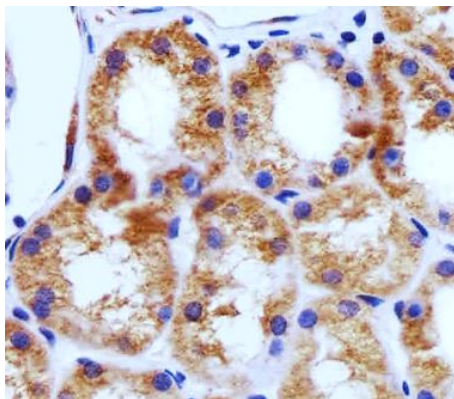
Note

For laboratory research only, not for drug, diagnostic or other use.

Bioinformation

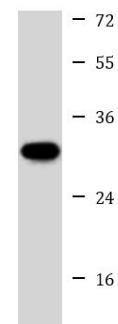
| | |
|-----------------------|--|
| Database links | GeneID: 8915 Human Swiss-port # O95999 Human |
| Gene Symbol | BCL10 |
| Gene Full Name | B-cell CLL/lymphoma 10 |
| Background | This gene was identified by its translocation in a case of mucosa-associated lymphoid tissue (MALT) lymphoma. The protein encoded by this gene contains a caspase recruitment domain (CARD), and has been shown to induce apoptosis and to activate NF-kappaB. This protein is reported to interact with other CARD domain containing proteins including CARD9, 10, 11 and 14, which are thought to function as upstream regulators in NF-kappaB signaling. This protein is found to form a complex with MALT1, a protein encoded by another gene known to be translocated in MALT lymphoma. MALT1 and this protein are thought to synergize in the activation of NF-kappaB, and the deregulation of either of them may contribute to the same pathogenetic process that leads to the malignancy. [provided by RefSeq, Jul 2008] |
| Function | Involved in adaptive immune response. Promotes apoptosis, pro-caspase-9 maturation and activation of NF-kappa-B via NIK and IKK. May be an adapter protein between upstream TNFR1-TRADD-RIP complex and the downstream NIK-IKK-IKAP complex. Is a substrate for MALT1. [UniProt] |
| Calculated Mw | 26 kDa |
| PTM | Phosphorylated. Phosphorylation results in dissociation from TRAF2 and binding to BIRC2/c-IAP2. Phosphorylated by IKKBK/IKKB. |
| Cellular Localization | Cytoplasm, perinuclear region. Membrane raft. Note=Appears to have a perinuclear, compact and filamentous pattern of expression. Also found in the nucleus of several types of tumor cells. Colocalized with DPP4 in membrane rafts |

Images



ARG55820 anti-Bcl 10 antibody IHC-P image

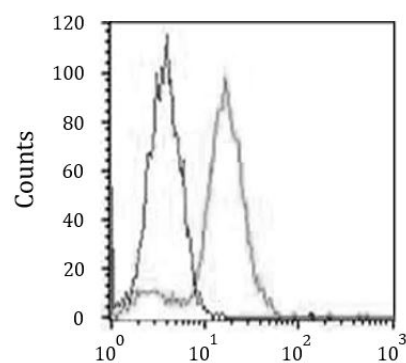
Immunohistochemistry: Paraffin-embedded Human kidney tissue stained with ARG55820 anti-Bcl 10 antibody at 1:25 dilution.



Daudi

ARG55820 anti-Bcl 10 antibody WB image

Western blot: 35 µg of Daudi cell lysate stained with ARG55820 anti-Bcl 10 antibody at 1:1000 dilution.



ARG55820 anti-Bcl 10 antibody FACS image

Flow Cytometry: HeLa cells stained with ARG55820 anti-Bcl 10 antibody (right histogram) at 1:25 dilution or isotype control antibody (left histogram), followed by incubation with Alexa Fluor® 488 labelled secondary antibody.