

## ARG55855 anti-FBXO28 antibody

Package: 100 µl  
Store at: -20°C

### Summary

|                     |   |
|---------------------|---|
| Product Description | Rabbit Polyclonal antibody recognizes FBXO28  |
| Tested Reactivity   | Hu, Ms  |
| Predict Reactivity  | Bov   |
| Tested Application  | WB  |
| Host                | Rabbit  |
| Clonality           | Polyclonal  |
| Isotype             | IgG   |
| Target Name         | FBXO28  |
| Species             | Human   |
| Immunogen           | KLH-conjugated synthetic peptide corresponding to aa. 339-368 (C-terminus) of Human FBXO28. |
| Conjugation         | Un-conjugated   |
| Alternate Names     | F-box only protein 28; Fbx28; CENP-30   |

### Application Instructions

|                   |  |          |
|-------------------|--|----------|
| Application table | Application  | Dilution |
|                   | WB   | 1:1000   |
| Application Note  | * The dilutions indicate recommended starting dilutions and the optimal dilutions or concentrations should be determined by the scientist. |          |
| Positive Control  | ZR-75-1  |          |

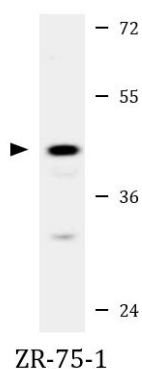
### Properties

|                     |  |
|---------------------|--|
| Form                | Liquid   |
| Purification        | Purification with Protein A and immunogen peptide.   |
| Buffer              | PBS and 0.09% (W/V) Sodium azide   |
| Preservative        | 0.09% (W/V) Sodium azide   |
| Storage instruction | For continuous use, store undiluted antibody at 2-8°C for up to a week. For long-term storage, aliquot and store at -20°C or below. Storage in frost free freezers is not recommended. Avoid repeated freeze/thaw cycles. Suggest spin the vial prior to opening. The antibody solution should be gently mixed before use. |
| Note                | For laboratory research only, not for drug, diagnostic or other use.   |

### Bioinformation

|                |   |
|----------------|---|
| Database links | <a href="#">GeneID: 23219 Human</a><br><a href="#">GeneID: 67948 Mouse</a><br><a href="#">Swiss-port # Q8BIG4 Mouse</a><br><a href="#">Swiss-port # Q9NVF7 Human</a>  |
| Gene Symbol    | FBXO28  |
| Gene Full Name | F-box protein 28  |
| Background     | Members of the F-box protein family, such as FBXO28, are characterized by an approximately 40-amino acid F-box motif. SCF complexes, formed by SKP1 (MIM 601434), cullin (see CUL1; MIM 603134), and F-box proteins, act as protein-ubiquitin ligases. F-box proteins interact with SKP1 through the F box, and they interact with ubiquitination targets through other protein interaction domains (Jin et al., 2004 [PubMed 15520277]).[supplied by OMIM, Mar 2008] |
| Function       | Probably recognizes and binds to some phosphorylated proteins and promotes their ubiquitination and degradation. [UniProt]  |
| Calculated Mw  | 41 kDa  |

## Images



ARG55855 anti-FBXO28 antibody WB image

Western blot: 35 µg of ZR-75-1 cell lysate stained with ARG55855 anti-FBXO28 antibody.