

ARG55860
anti-TCL1 antibodyPackage: 100 µl
Store at: -20°C**Summary**

Product Description	Rabbit Polyclonal antibody recognizes TCL1A
Tested Reactivity	Hu
Tested Application	FACS, WB
Host	Rabbit
Clonality	Polyclonal
Isotype	IgG
Target Name	TCL1
Species	Human
Immunogen	KLH-conjugated synthetic peptide corresponding to aa. 32-66 (Center) of Human TCL1.
Conjugation	Un-conjugated
Alternate Names	Protein p14 TCL1; Oncogene TCL1; T-cell leukemia/lymphoma protein 1A; TCL1; Oncogene TCL-1

Application Instructions

Application table	Application	Dilution
	FACS	1:25
	WB	1:1000
Application Note	* The dilutions indicate recommended starting dilutions and the optimal dilutions or concentrations should be determined by the scientist.	
Positive Control	Ramos	

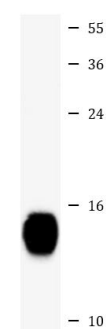
Properties

Form	Liquid
Purification	Purification with Protein A and immunogen peptide.
Buffer	PBS and 0.09% (W/V) Sodium azide
Preservative	0.09% (W/V) Sodium azide
Storage instruction	For continuous use, store undiluted antibody at 2-8°C for up to a week. For long-term storage, aliquot and store at -20°C or below. Storage in frost free freezers is not recommended. Avoid repeated freeze/thaw cycles. Suggest spin the vial prior to opening. The antibody solution should be gently mixed before use.
Note	For laboratory research only, not for drug, diagnostic or other use.

Bioinformation

Database links	GeneID: 8115 Human Swiss-port # P56279 Human
Gene Symbol	TCL1A
Gene Full Name	T-cell leukemia/lymphoma 1A
Background	Overexpression of the TCL1 gene in humans has been implicated in the development of mature T cell leukemia, in which chromosomal rearrangements bring the TCL1 gene in close proximity to the T-cell antigen receptor (TCR)-alpha (MIM 186880) or TCR-beta (MIM 186930) regulatory elements (summarized by Virgilio et al., 1998 [PubMed 9520462]). In normal T cells TCL1 is expressed in CD4-/CD8- cells, but not in cells at later stages of differentiation. TCL1 functions as a coactivator of the cell survival kinase AKT (MIM 164730) (Laine et al., 2000 [PubMed 10983986]).[supplied by OMIM, Jul 2010]
Function	Enhances the phosphorylation and activation of AKT1, AKT2 and AKT3. Promotes nuclear translocation of AKT1. Enhances cell proliferation, stabilizes mitochondrial membrane potential and promotes cell survival. [UniProt]
Calculated Mw	13 kDa
Cellular Localization	Cytoplasm. Nucleus. Microsome. Endoplasmic reticulum. Note=Microsomal fraction

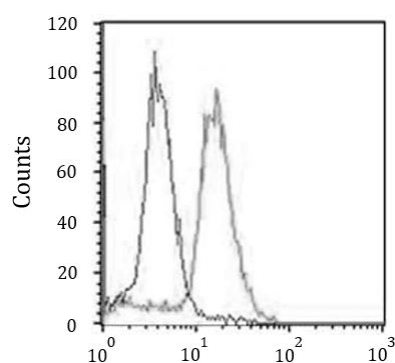
Images



Ramos

ARG55860 anti-TCL1 antibody WB image

Western blot: 35 µg of Ramos cell lysate stained with ARG55860 anti-TCL1 antibody at 1:1000 dilution.



ARG55860 anti-TCL1 antibody FACS image

Flow Cytometry: Ramos cells stained with ARG55860 anti-TCL1 antibody (right histogram) at 1:25 dilution or isotype control antibody (left histogram), followed by incubation with Alexa Fluor® 488 labelled secondary antibody.