

ARG55863
anti-TUFM antibodyPackage: 100 µl
Store at: -20°C

Summary

Product Description	Rabbit Polyclonal antibody recognizes TUFM
Tested Reactivity	Hu, Ms, Rat
Tested Application	ICC/IF, WB
Host	Rabbit
Clonality	Polyclonal
Isotype	IgG
Target Name	TUFM
Species	Human
Immunogen	KLH-conjugated synthetic peptide corresponding to aa. 112-147 (N-terminus) of Human TUFM.
Conjugation	Un-conjugated
Alternate Names	P43; EF-TuMT; Elongation factor Tu, mitochondrial; EF-Tu; COXPD4; EFTU

Application Instructions

Application table	Application	Dilution
	ICC/IF	1:25
	WB	1:1000
Application Note	* The dilutions indicate recommended starting dilutions and the optimal dilutions or concentrations should be determined by the scientist.	
Positive Control	A431	

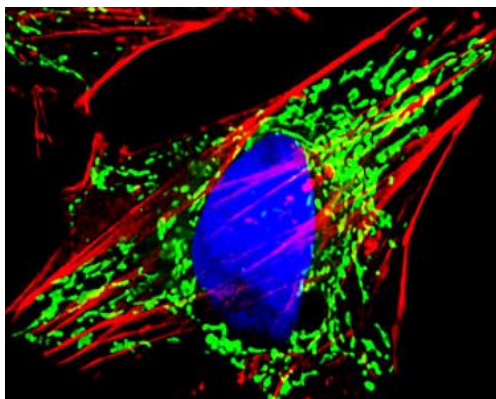
Properties

Form	Liquid
Purification	Purification with Protein A and immunogen peptide.
Buffer	PBS and 0.09% (W/V) Sodium azide
Preservative	0.09% (W/V) Sodium azide
Storage instruction	For continuous use, store undiluted antibody at 2-8°C for up to a week. For long-term storage, aliquot and store at -20°C or below. Storage in frost free freezers is not recommended. Avoid repeated freeze/thaw cycles. Suggest spin the vial prior to opening. The antibody solution should be gently mixed before use.
Note	For laboratory research only, not for drug, diagnostic or other use.

Bioinformation

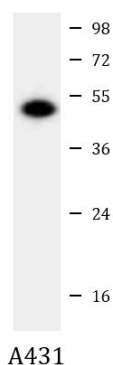
Gene Symbol	TUFM
Gene Full Name	Tu translation elongation factor, mitochondrial
Background	This gene encodes a protein which participates in protein translation in mitochondria. Mutations in this gene have been associated with combined oxidative phosphorylation deficiency resulting in lactic acidosis and fatal encephalopathy. A pseudogene has been identified on chromosome 17. [provided by RefSeq, Jul 2008]
Function	This protein promotes the GTP-dependent binding of aminoacyl-tRNA to the A-site of ribosomes during protein biosynthesis. [UniProt]
Calculated Mw	50 kDa
Cellular Localization	Mitochondrion.

Images



ARG55863 anti-TUFM antibody ICC/IF image

Immunofluorescence: HeLa cells stained with ARG55863 anti-TUFM antibody (green) at 1:25 dilution. Cytoplasmic actin was counterstained with Alexa Fluor® 555 conjugated with Phalloidin (red). DAPI (blue) for nuclear staining.



ARG55863 anti-TUFM antibody WB image

Western blot: 20 µg of A431 cell lysate stained with ARG55863 anti-TUFM antibody at 1:1000 dilution.