

ARG55870 anti-Glutaredoxin 5 antibody

Package: 100 µl
Store at: -20°C

Summary

Product Description	Rabbit Polyclonal antibody recognizes Glutaredoxin 5
Tested Reactivity	Hu
Tested Application	WB
Host	Rabbit
Clonality	Polyclonal
Isotype	IgG
Target Name	Glutaredoxin 5
Species	Human
Immunogen	KLH-conjugated synthetic peptide corresponding to aa. 93-127 (Center) of Human Glutaredoxin 5.
Conjugation	Un-conjugated
Alternate Names	C14orf87; Monothiol glutaredoxin-5; PR01238; Glutaredoxin-related protein 5, mitochondrial; FLB4739; GRX5; PRSA; PRO1238

Application Instructions

Application table	Application	Dilution
	WB	1:1000
Application Note	* The dilutions indicate recommended starting dilutions and the optimal dilutions or concentrations should be determined by the scientist.	
Positive Control	Human liver	

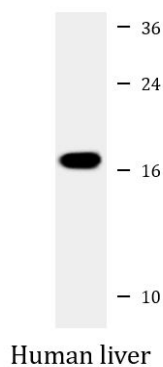
Properties

Form	Liquid
Purification	Purification with Protein A and immunogen peptide.
Buffer	PBS and 0.09% (W/V) Sodium azide
Preservative	0.09% (W/V) Sodium azide
Storage instruction	For continuous use, store undiluted antibody at 2-8°C for up to a week. For long-term storage, aliquot and store at -20°C or below. Storage in frost free freezers is not recommended. Avoid repeated freeze/thaw cycles. Suggest spin the vial prior to opening. The antibody solution should be gently mixed before use.
Note	For laboratory research only, not for drug, diagnostic or other use.

Bioinformation

Database links	GeneID: 51218 Human Swiss-port # Q86SX6 Human
Gene Symbol	GLRX5
Gene Full Name	glutaredoxin 5
Background	This gene encodes a mitochondrial protein, which is evolutionarily conserved. It is involved in the biogenesis of iron-sulfur clusters, which are required for normal iron homeostasis. Mutations in this gene are associated with autosomal recessive pyridoxine-refractory sideroblastic anemia. [provided by RefSeq, May 2010]
Function	Monothiol glutaredoxin involved in the biogenesis of iron-sulfur clusters. Required for normal iron homeostasis. Required for normal regulation of hemoglobin synthesis by the iron-sulfur protein ACO1. [UniProt]
Calculated Mw	17 kDa
Cellular Localization	Mitochondrion.

Images



ARG55870 anti-Glutaredoxin 5 antibody WB image

Western blot: 35 µg of Human liver lysate stained with ARG55870 anti-Glutaredoxin 5 antibody at 1:1000 dilution.