

## ARG55879 anti-HES5 antibody

Package: 100 µl  
Store at: -20°C

### Summary

Product Description	Rabbit Polyclonal antibody recognizes HES5
Tested Reactivity	Hu, Ms
Tested Application	WB
Host	Rabbit
Clonality	Polyclonal
Isotype	IgG
Target Name	HES5
Species	Human
Immunogen	KLH-conjugated synthetic peptide corresponding to aa. 81-115 (Center) of Human HES5.
Conjugation	Un-conjugated
Alternate Names	Transcription factor HES-5; bHLHb38; Class B basic helix-loop-helix protein 38; Hairy and enhancer of split 5

### Application Instructions

Application table	Application	Dilution
	WB	1:1000
Application Note	* The dilutions indicate recommended starting dilutions and the optimal dilutions or concentrations should be determined by the scientist.	
Positive Control	Human heart	

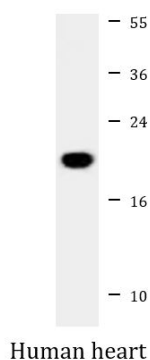
### Properties

Form	Liquid
Purification	Purification with Protein A and immunogen peptide.
Buffer	PBS and 0.09% (W/V) Sodium azide
Preservative	0.09% (W/V) Sodium azide
Storage instruction	For continuous use, store undiluted antibody at 2-8°C for up to a week. For long-term storage, aliquot and store at -20°C or below. Storage in frost free freezers is not recommended. Avoid repeated freeze/thaw cycles. Suggest spin the vial prior to opening. The antibody solution should be gently mixed before use.
Note	For laboratory research only, not for drug, diagnostic or other use.

### Bioinformation

Database links	<a href="#">GeneID: 15208 Mouse</a>
	<a href="#">GeneID: 388585 Human</a>
	<a href="#">Swiss-port # P70120 Mouse</a>
	<a href="#">Swiss-port # Q5TA89 Human</a>
Gene Symbol	HES5
Gene Full Name	hes family bHLH transcription factor 5
Background	This gene encodes a member of a family of basic helix-loop-helix transcriptional repressors. The protein product of this gene, which is activated downstream of the Notch pathway, regulates cell differentiation in multiple tissues. Disruptions in the normal expression of this gene have been associated with developmental diseases and cancer. [provided by RefSeq, Dec 2008]
Function	Transcriptional repressor of genes that require a bHLH protein for their transcription. Plays an important role as neurogenesis negative regulator (By similarity). [UniProt]
Calculated Mw	18 kDa
Cellular Localization	Nucleus {ECO:0000255   PROSITE- ProRule:PRU00380, ECO:0000255   PROSITE-ProRule:PRU00981}

## Images



Human heart

ARG55879 anti-HES5 antibody WB image

Western blot: 20 µg of Human heart lysate stained with ARG55879 anti-HES5 antibody at 1:1000 dilution.