

ARG55881 anti-eIF1 antibody

Package: 100 µl
Store at: -20°C

Summary

Product Description	Rabbit Polyclonal antibody recognizes eIF1
Tested Reactivity	Hu, Ms
Tested Application	WB
Host	Rabbit
Clonality	Polyclonal
Isotype	IgG
Target Name	eIF1
Species	Human
Immunogen	KLH-conjugated synthetic peptide corresponding to aa. 100-133 (C-terminus) of Human eIF1.
Conjugation	Un-conjugated
Alternate Names	EIF1A; EIF-1; eIF1; Eukaryotic translation initiation factor 1; ISO1; Protein translation factor SUI1 homolog; SUI1; A121; Sui1iso1

Application Instructions

Application table	Application	Dilution
	WB	1:1000
Application Note	* The dilutions indicate recommended starting dilutions and the optimal dilutions or concentrations should be determined by the scientist.	
Positive Control	Mouse cerebellum	

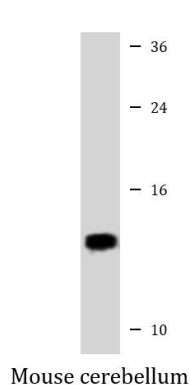
Properties

Form	Liquid
Purification	Purification with Protein A and immunogen peptide.
Buffer	PBS and 0.09% (W/V) Sodium azide
Preservative	0.09% (W/V) Sodium azide
Storage instruction	For continuous use, store undiluted antibody at 2-8°C for up to a week. For long-term storage, aliquot and store at -20°C or below. Storage in frost free freezers is not recommended. Avoid repeated freeze/thaw cycles. Suggest spin the vial prior to opening. The antibody solution should be gently mixed before use.
Note	For laboratory research only, not for drug, diagnostic or other use.

Bioinformation

Database links	GeneID: 10209 Human
	GeneID: 20918 Mouse
	Swiss-port # P41567 Human
	Swiss-port # P48024 Mouse
Gene Symbol	EIF1
Gene Full Name	eukaryotic translation initiation factor 1
Function	Necessary for scanning and involved in initiation site selection. Promotes the assembly of 48S ribosomal complexes at the authentic initiation codon of a conventional capped mRNA. [UniProt]
Calculated Mw	13 kDa

Images



ARG55881 anti-eIF1 antibody WB image

Western blot: Mouse cerebellum lysate stained with ARG55881 anti-eIF1 antibody at 1:2000 dilution.