

ARG56035 anti-CD54 / ICAM1 antibody [1H4]

Package: 50 µg
Store at: -20°C

Summary

Product Description	Mouse Monoclonal antibody [1H4] recognizes CD54 / ICAM1
Tested Reactivity	Hu
Tested Application	FACS, IHC-P
Host	Mouse
Clonality	Monoclonal
Clone	1H4
Isotype	IgG2b, kappa
Target Name	CD54 / ICAM1
Species	Human
Immunogen	Raji Burkitt lymphoma cells.
Conjugation	Un-conjugated
Alternate Names	CD54; CD antigen CD54; BB2; P3.58; Intercellular adhesion molecule 1; Major group rhinovirus receptor; ICAM-1

Application Instructions

Application table	Application	Dilution
	FACS	0.5 - 1 µg/10 ⁶ cells
	IHC-P	2 - 4 µg/ml
Application Note	IHC-P: Antigen Retrieval: Boil tissue section in 10 mM Tris with 1 mM EDTA (pH 9.0) for 10-20 min, followed by cooling at RT for 20 min. * The dilutions indicate recommended starting dilutions and the optimal dilutions or concentrations should be determined by the scientist.	

Properties

Form	Liquid
Purification	Purification with Protein G.
Buffer	PBS (pH 7.4), 0.05% Sodium azide and 0.1 mg/ml BSA
Preservative	0.05% Sodium azide
Stabilizer	0.1 mg/ml BSA
Concentration	0.2 mg/ml
Storage instruction	For continuous use, store undiluted antibody at 2-8°C for up to a week. For long-term storage, aliquot and store at -20°C or below. Storage in frost free freezers is not recommended. Avoid repeated freeze/thaw cycles. Suggest spin the vial prior to opening. The antibody solution should be gently mixed

before use.

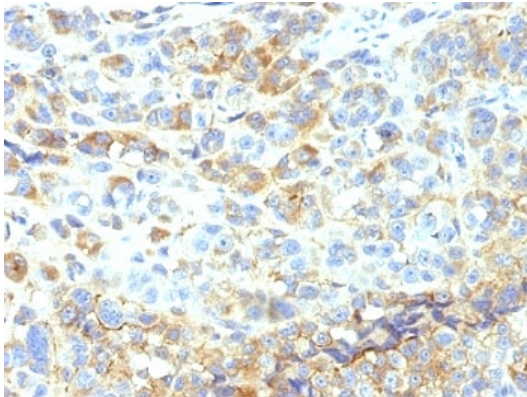
Note

For laboratory research only, not for drug, diagnostic or other use.

Bioinformation

Database links	GeneID: 3383 Human Swiss-port # P05362 Human
Gene Symbol	ICAM1
Gene Full Name	intercellular adhesion molecule 1
Background	This gene encodes a cell surface glycoprotein which is typically expressed on endothelial cells and cells of the immune system. It binds to integrins of type CD11a / CD18, or CD11b / CD18 and is also exploited by Rhinovirus as a receptor. [provided by RefSeq, Jul 2008]
Function	ICAM proteins are ligands for the leukocyte adhesion protein LFA-1 (integrin alpha-L/beta-2). During leukocyte trans-endothelial migration, ICAM1 engagement promotes the assembly of endothelial apical cups through ARHGEF26/SGEF and RHOG activation (By similarity). [UniProt]
Research Area	Cell Biology and Cellular Response antibody; Developmental Biology antibody; Immune System antibody; Cytotoxic T Cell Surface Study antibody
Calculated Mw	58 kDa
PTM	Monoubiquitinated, which is promoted by MARCH9 and leads to endocytosis.
Cellular Localization	Cell surface

Images



ARG56035 anti-CD54 / ICAM1 antibody [1H4] IHC-P image

Immunohistochemistry: Formalin-fixed, paraffin-embedded Human melanoma stained with ARG56035 anti-CD54 / ICAM1 antibody [1H4].