

## ARG56051 anti-MFGE8 / Lactadherin antibody [SPM291]

Package: 50 µg  
Store at: -20°C

### Summary

Product Description	Mouse Monoclonal antibody [SPM291] recognizes MFGE8 / Lactadherin
Tested Reactivity	Hu
Tested Application	IHC-P
Host	Mouse
Clonality	Monoclonal
Clone	SPM291
Isotype	IgG1, kappa
Target Name	MFGE8 / Lactadherin
Species	Human
Immunogen	A Human milk fat globule membrane preparation.
Conjugation	Un-conjugated
Alternate Names	SPAG10; MFGM; HsT19888; HMFG; Milk fat globule-EGF factor 8; MFG-E8; BA46; hP47; EDIL1; Lactadherin; OAcGD3S; Breast epithelial antigen BA46; SED1

### Application Instructions

Application table	Application	Dilution
	IHC-P	1 - 2 µg/ml
Application Note	<p>IHC-P: Antigen Retrieval: Boil tissue section in 10 mM Citrate buffer (pH 6.0) for 10-20 min, followed by cooling at RT for 20 min.</p> <p>* The dilutions indicate recommended starting dilutions and the optimal dilutions or concentrations should be determined by the scientist.</p>	

### Properties

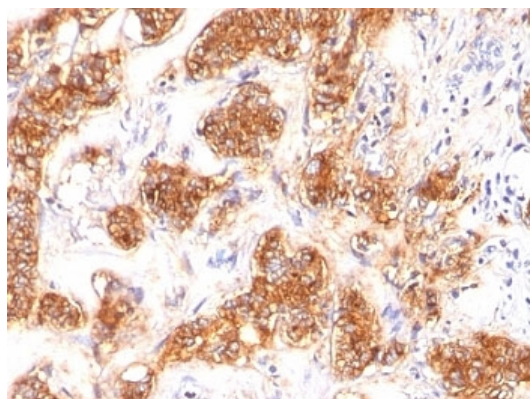
Form	Liquid
Purification	Purification with Protein G.
Buffer	PBS (pH 7.4), 0.05% Sodium azide and 0.1 mg/ml BSA
Preservative	0.05% Sodium azide
Stabilizer	0.1 mg/ml BSA
Concentration	0.2 mg/ml
Storage instruction	For continuous use, store undiluted antibody at 2-8°C for up to a week. For long-term storage, aliquot and store at -20°C or below. Storage in frost free freezers is not recommended. Avoid repeated freeze/thaw cycles. Suggest spin the vial prior to opening. The antibody solution should be gently mixed before use.

Note For laboratory research only, not for drug, diagnostic or other use.

## Bioinformation

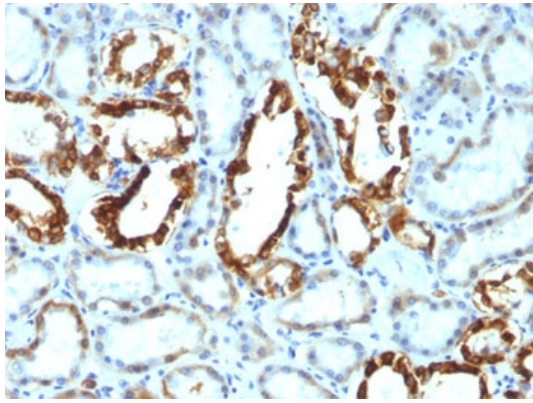
Database links	<a href="#">GeneID: 4240 Human</a> <a href="#">Swiss-port # Q08431 Human</a>
Gene Symbol	MFGE8
Gene Full Name	milk fat globule-EGF factor 8 protein
Background	This gene encodes a preproprotein that is proteolytically processed to form multiple protein products. The major encoded protein product, lactadherin, is a membrane glycoprotein that promotes phagocytosis of apoptotic cells. This protein has also been implicated in wound healing, autoimmune disease, and cancer. Lactadherin can be further processed to form a smaller cleavage product, medin, which comprises the major protein component of aortic medial amyloid (AMA). Alternative splicing results in multiple transcript variants. [provided by RefSeq, Jul 2015]
Function	<p>Plays an important role in the maintenance of intestinal epithelial homeostasis and the promotion of mucosal healing. Promotes VEGF-dependent neovascularization (By similarity). Contributes to phagocytic removal of apoptotic cells in many tissues. Specific ligand for the alpha-v/beta-3 and alpha-v/beta-5 receptors. Also binds to phosphatidylserine-enriched cell surfaces in a receptor-independent manner. Zona pellucida-binding protein which may play a role in gamete interaction. Binds specifically to rotavirus and inhibits its replication.</p> <p>Medin is the main constituent of aortic medial amyloid. [UniProt]</p>
Calculated Mw	43 kDa
PTM	Medin has a ragged N-terminus with minor species starting at Pro-264 and Gly-273.
Cellular Localization	Cell surface and cytoplasmic

## Images



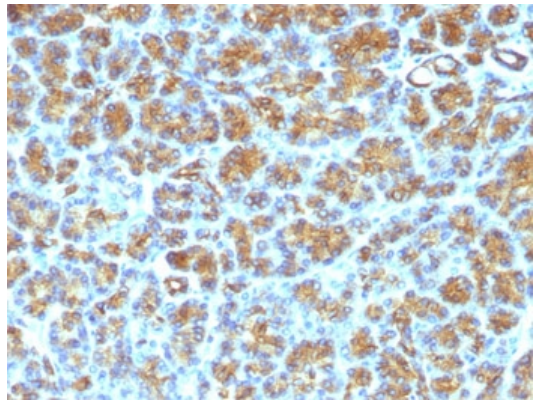
ARG56051 anti-MFGE8 / Lactadherin antibody [SPM291] IHC-P image

Immunohistochemistry: Formalin-fixed, paraffin-embedded Human breast carcinoma stained with ARG56051 anti-MFGE8 / Lactadherin antibody [SPM291].



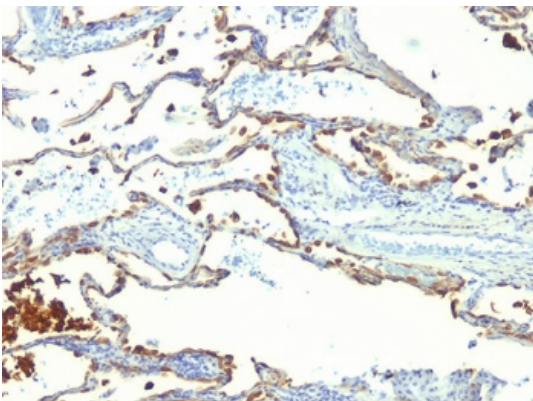
ARG56051 anti-MFGE8 / Lactadherin antibody [SPM291] IHC-P image

Immunohistochemistry: Formalin-fixed, paraffin-embedded Human renal cell carcinoma stained with ARG56051 anti-MFGE8 / Lactadherin antibody [SPM291].



ARG56051 anti-MFGE8 / Lactadherin antibody [SPM291] IHC-P image

Immunohistochemistry: Formalin-fixed, paraffin-embedded Human pancreas stained with ARG56051 anti-MFGE8 / Lactadherin antibody [SPM291].



ARG56051 anti-MFGE8 / Lactadherin antibody [SPM291] IHC-P image

Immunohistochemistry: Formalin-fixed, paraffin-embedded Human lung carcinoma stained with ARG56051 anti-MFGE8 / Lactadherin antibody [SPM291].