

ARG56060 anti-Mucin 5AC antibody [CLH2]

Package: 50 µg
Store at: -20°C

Summary

Product Description	Mouse Monoclonal antibody [CLH2] recognizes Mucin 5AC
Tested Reactivity	Hu
Tested Application	IHC-P
Host	Mouse
Clonality	Monoclonal
Clone	CLH2
Isotype	IgG1, kappa
Target Name	Mucin 5AC
Species	Human
Immunogen	Synthetic peptide of Human Mucin 5AC tandem repeat.
Conjugation	Un-conjugated
Alternate Names	leB; Major airway glycoprotein; Lewis B blood group antigen; Tracheobronchial mucin; mucin; Mucin-5AC; LeB; MUC5; TBM; Gastric mucin; MUC-5AC; Mucin-5 subtype AC, tracheobronchial

Application Instructions

Application table	Application	Dilution
	IHC-P	1 - 2 µg/ml
Application Note	<p>IHC-P: Antigen Retrieval: Boil tissue section in 10 mM Citrate buffer (pH 6.0) for 10-20 min, followed by cooling at RT for 20 min.</p> <p>* The dilutions indicate recommended starting dilutions and the optimal dilutions or concentrations should be determined by the scientist.</p>	

Properties

Form	Liquid
Purification	Purification with Protein G.
Buffer	PBS (pH 7.4), 0.05% Sodium azide and 0.1 mg/ml BSA
Preservative	0.05% Sodium azide
Stabilizer	0.1 mg/ml BSA
Concentration	0.2 mg/ml
Storage instruction	For continuous use, store undiluted antibody at 2-8°C for up to a week. For long-term storage, aliquot and store at -20°C or below. Storage in frost free freezers is not recommended. Avoid repeated freeze/thaw cycles. Suggest spin the vial prior to opening. The antibody solution should be gently mixed before use.

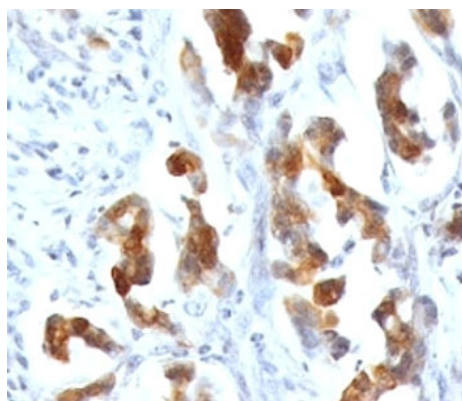
Note

For laboratory research only, not for drug, diagnostic or other use.

Bioinformation

Database links	GeneID: 4586 Human
Gene Symbol	MUC5AC
Gene Full Name	mucin 5AC, oligomeric mucus/gel-forming
Function	Gel-forming glycoprotein of gastric and respiratory tract epithelia that protects the mucosa from infection and chemical damage by binding to inhaled microorganisms and particles that are subsequently removed by the mucociliary system. [UniProt]
Calculated Mw	586 kDa
PTM	C-, O- and N-glycosylated. O-glycosylated on the Thr-/Ser-rich tandem repeats. C-mannosylation in the Cys-rich subdomains may be required for proper folding of these regions and for export from the endoplasmic reticulum during biosynthesis. Proteolytic cleavage in the C-terminal is initiated early in the secretory pathway and does not involve a serine protease. The extent of cleavage is increased in the acidic parts of the secretory pathway. Cleavage generates a reactive group which could link the protein to a primary amide.
Cellular Localization	Cytoplasmic

Images



ARG56060 anti-Mucin 5AC antibody [CLH2] IHC-P image

Immunohistochemistry: Formalin-fixed, paraffin-embedded Human gastric carcinoma stained with ARG56060 anti-Mucin 5AC antibody [CLH2].