

ARG56068 anti-CD31 antibody [1A10]

Package: 250 µl
Store at: -20°C

Summary

Product Description	Mouse Monoclonal antibody [1A10] recognizes CD31
Tested Reactivity	Hu
Tested Application	IHC-P, WB
Host	Mouse
Clonality	Monoclonal
Clone	1A10
Isotype	IgG1, kappa
Target Name	CD31
Species	Human
Immunogen	Prokaryotic recombinant fusion protein corresponding to a portion of the extracellular domain downstream of the signal sequence of CD31.
Conjugation	Un-conjugated
Alternate Names	EndoCAM; CD31/EndoCAM; PECAM-1; CD31; PECA1; CD antigen CD31; GPIIA'; endoCAM; Platelet endothelial cell adhesion molecule

Application Instructions

Application table	Application	Dilution
	IHC-P	1:50 - 1:100
	WB	1 - 2 µg/ml
Application Note	IHC-P: Antigen Retrieval: Boil tissue section in 10 mM Tris with 1 mM EDTA (pH 9.0) for 10-20 min, followed by cooling at RT for 20 min. * The dilutions indicate recommended starting dilutions and the optimal dilutions or concentrations should be determined by the scientist.	
Positive Control	THP-1	
Observed Size	~ 105 kDa	

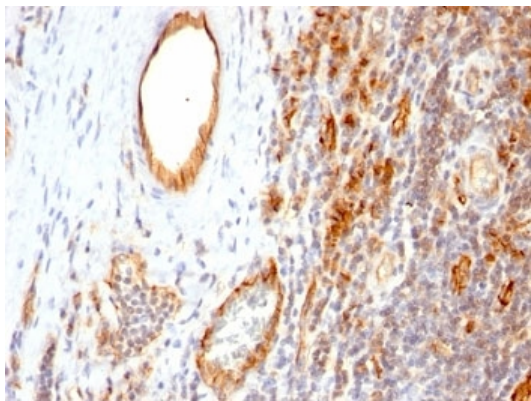
Properties

Form	Liquid
Purification	Unpurified high titer supernatant
Buffer	IMDM, 0.05% Sodium azide and 5% FBS
Preservative	0.05% Sodium azide
Stabilizer	5% FBS

Storage instruction	For continuous use, store undiluted antibody at 2-8°C for up to a week. For long-term storage, aliquot and store at -20°C or below. Storage in frost free freezers is not recommended. Avoid repeated freeze/thaw cycles. Suggest spin the vial prior to opening. The antibody solution should be gently mixed before use.
Note	For laboratory research only, not for drug, diagnostic or other use.

Bioinformation

Database links	GeneID: 5175 Human Swiss-port # P16284 Human
Gene Symbol	PECAM1
Gene Full Name	platelet/endothelial cell adhesion molecule 1
Background	CD31 protein is found on the surface of platelets, monocytes, neutrophils, and some types of T-cells, and makes up a large portion of endothelial cell intercellular junctions. The encoded protein is a member of the immunoglobulin superfamily and is likely involved in leukocyte migration, angiogenesis, and integrin activation. [provided by RefSeq, May 2010]
Function	<p>CD31 is a cell adhesion molecule which is required for leukocyte transendothelial migration (TEM) under most inflammatory conditions (PubMed:19342684, PubMed:17580308). Tyr-690 plays a critical role in TEM and is required for efficient trafficking of PECAM1 to and from the lateral border recycling compartment (LBRC) and is also essential for the LBRC membrane to be targeted around migrating leukocytes (PubMed:19342684). Trans-homophilic interaction may play a role in endothelial cell-cell adhesion via cell junctions (PubMed:27958302). Heterophilic interaction with CD177 plays a role in transendothelial migration of neutrophils (PubMed:17580308). Homophilic ligation of PECAM1 prevents macrophage-mediated phagocytosis of neighboring viable leukocytes by transmitting a detachment signal (PubMed:12110892). Promotes macrophage-mediated phagocytosis of apoptotic leukocytes by tethering them to the phagocytic cells; PECAM1-mediated detachment signal appears to be disabled in apoptotic leukocytes (PubMed:12110892). Modulates bradykinin receptor BDKRB2 activation (PubMed:18672896). Regulates bradykinin- and hyperosmotic shock-induced ERK1/2 activation in endothelial cells (PubMed:18672896). Induces susceptibility to atherosclerosis.</p> <p>Isoform Delta15: Does not protect against apoptosis. [UniProt]</p>
Highlight	<p>Related products: CD31 antibodies; CD31 Duos / Panels; Anti-Mouse IgG secondary antibodies;</p> <p>Related news: Besides tumor suppression, what's p53 busy for during embryogenesis?</p>
Research Area	Cancer antibody; Cell Biology and Cellular Response antibody; Controls and Markers antibody; Developmental Biology antibody; Signaling Transduction antibody; Endothelial Cell Marker antibody; Microvascular Density Study antibody
Calculated Mw	83 kDa
PTM	<p>Phosphorylated on Ser and Tyr residues after cellular activation. Phosphorylated on tyrosine residues by FER and FES in response to FCER1 activation (By similarity). In endothelial cells Fyn mediates mechanical-force (stretch or pull) induced tyrosine phosphorylation.</p> <p>Palmitoylation by ZDHHC21 is necessary for cell surface expression in endothelial cells and enrichment in membrane rafts.</p>
Cellular Localization	Cell surface and cytoplasm of endothelial cells



ARG56068 anti-CD31 antibody [1A10] IHC-P image

Immunohistochemistry: Formalin-fixed, paraffin-embedded Human tonsil stained with ARG56068 anti-CD31 antibody [1A10].



ARG56068 anti-CD31 antibody [1A10] WB image

Western blot: THP-1 cell lysate stained with ARG56068 anti-CD31 antibody [1A10].