

## ARG56153 anti-CXCL1 / GRO alpha antibody

Package: 50 µg  
Store at: -20°C

### Summary

Product Description	Rabbit Polyclonal antibody recognizes CXCL1 / GRO alpha
Tested Reactivity	Hu, Ms
Tested Application	ELISA, IHC-P, Neut, WB
Specificity	This antibody has been tested by ELISA to have less than 1% cross-reactivity with 50 ng/ml of human CXCL2 (GRO beta) and human CXCL3 (GRO gamma).
Host	Rabbit
Clonality	Polyclonal
Isotype	IgG
Target Name	CXCL1 / GRO alpha
Species	Human
Immunogen	Recombinant Human CXCL1 protein (ASVATELRQC CLQTLQGIHP KNIQSVNVKS PGPHCAQTEV IATLKNGRKA CLNPASPIVK KIIEKMLNSD KSN)
Conjugation	Un-conjugated
Alternate Names	Growth-regulated alpha protein; SCYB1; Melanoma growth stimulatory activity; MGSA-a; GRO-alpha; GROa; NAP-3; FSP; C-X-C motif chemokine 1; Neutrophil-activating protein 3; GRO1; MGSA; IL-8 homologues (murine)

### Application Instructions

Application table	Application	Dilution
	ELISA	0.5 - 2.0 µg/ml (using 100 µl / well antibody solution)
	IHC-P	1.5 - 5 µg/ml
	Neut	1.5 - 3.0 µg/ml (To yield [ND50] of the biological activity of Human GRO (100 ng/ml))
	WB	0.1 - 0.2 µg/ml
Application Note	IHC-P: Antigen Retrieval: Sodium citrate buffer (pH 6.0) * The dilutions indicate recommended starting dilutions and the optimal dilutions or concentrations should be determined by the scientist.	

### Properties

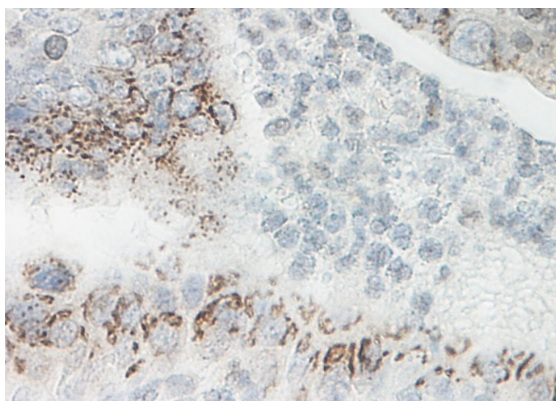
Form	Liquid
Purification	Affinity purification with immunogen.
Buffer	PBS (pH 7.2)
Concentration	1 mg/ml

Storage instruction	For continuous use, store undiluted antibody at 2-8°C for up to a week. For long-term storage, aliquot and store at -20°C. Storage in frost free freezers is not recommended. Avoid repeated freeze/thaw cycles. Suggest spin the vial prior to opening. The antibody solution should be gently mixed before use.
Note	For laboratory research only, not for drug, diagnostic or other use.

## Bioinformation

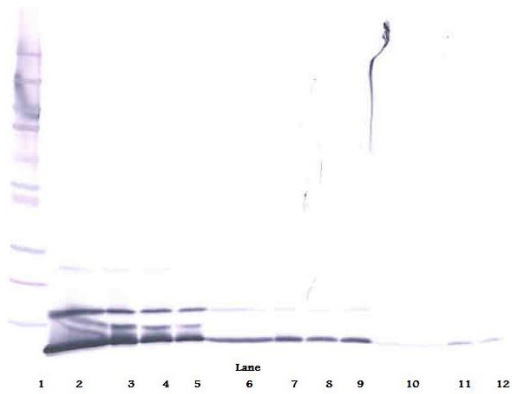
Database links	<a href="#">GeneID: 14825 Mouse</a> <a href="#">GeneID: 2919 Human</a> <a href="#">Swiss-port # P09341 Human</a> <a href="#">Swiss-port # P12850 Mouse</a>
Gene Symbol	CXCL1
Gene Full Name	chemokine (C-X-C motif) ligand 1 (melanoma growth stimulating activity, alpha)
Background	This antimicrobial gene encodes a member of the CXC subfamily of chemokines. The encoded protein is a secreted growth factor that signals through the G-protein coupled receptor, CXC receptor 2. This protein plays a role in inflammation and as a chemoattractant for neutrophils. Aberrant expression of this protein is associated with the growth and progression of certain tumors. A naturally occurring processed form of this protein has increased chemotactic activity. Alternate splicing results in coding and non-coding variants of this gene. A pseudogene of this gene is found on chromosome 4. [provided by RefSeq, Sep 2014]
Function	Has chemotactic activity for neutrophils. May play a role in inflammation and exerts its effects on endothelial cells in an autocrine fashion. In vitro, the processed forms GRO-alpha(4-73), GRO-alpha(5-73) and GRO-alpha(6-73) show a 30-fold higher chemotactic activity. [UniProt]
Calculated Mw	11 kDa
PTM	N-terminal processed forms GRO-alpha(4-73), GRO-alpha(5-73) and GRO-alpha(6-73) are produced by proteolytic cleavage after secretion from peripheral blood monocytes. [UniProt]

## Images



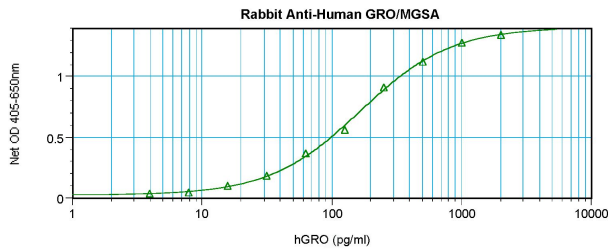
ARG56153 anti-CXCL1 / GRO alpha antibody IHC-P image

Immunohistochemistry: Formalin-fixed, paraffin-embedded Human colon/rectum adenocarcinoma stained with ARG56153 anti-CXCL1 / GRO alpha antibody at 1.5 - 5 µg/ml dilution (overnight, 4°C).



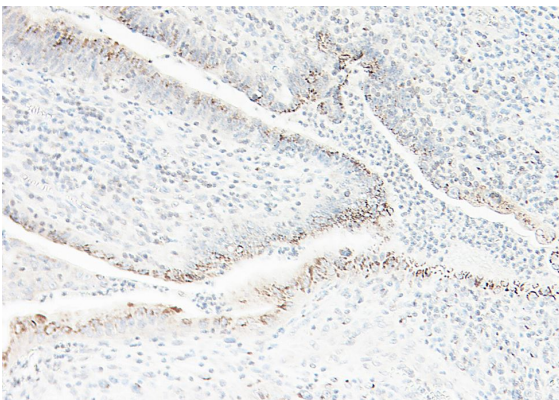
ARG56153 anti-CXCL1 / GRO alpha antibody WB image

Western blot: 250 - 0.24 ng (left to right) of recombinant Human GRO protein stained with ARG56153 anti-CXCL1 / GRO alpha antibody. (Reduced condition).



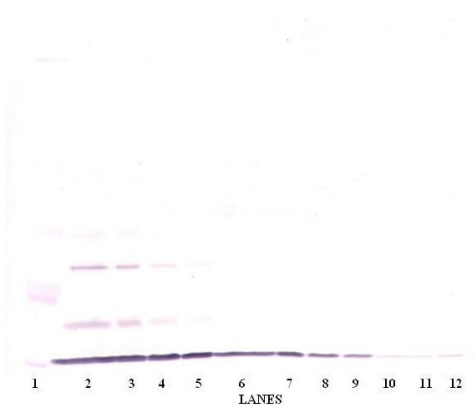
ARG56153 anti-CXCL1 / GRO alpha antibody ELISA image

ARG56153 anti-CXCL1 / GRO alpha antibody results of a typical standard run with optical density reading at 405 - 650 nm.



ARG56153 anti-CXCL1 / GRO alpha antibody IHC-P image

Immunohistochemistry: Formalin-fixed, paraffin-embedded Human colon/rectum adenocarcinoma stained with ARG56153 anti-CXCL1 / GRO alpha antibody at 1.5 - 5  $\mu$ g/ml  $\mu$ g/ml dilution (overnight, 4°C).



ARG56153 anti-CXCL1 / GRO alpha antibody WB image

Western blot: 250 - 0.24 ng (left to right) of recombinant Human GRO protein stained with ARG56153 anti-CXCL1 / GRO alpha antibody. (Unreduced condition).