

ARG56205 anti-CELA3B / Elastase 3B antibody [ELTS3B-2]

Package: 50 µg
Store at: -20°C

Summary

Product Description	Mouse Monoclonal antibody [ELTS3B-2] recognizes CELA3B / Elastase 3B
Tested Reactivity	Hu, Ms, Rat
Tested Application	IHC-P
Host	Mouse
Clonality	Monoclonal
Clone	ELTS3B-2
Isotype	IgG
Target Name	CELA3B / Elastase 3B
Species	Human
Immunogen	A partial recombinant Elastase 3B / ELA3B protein (aa 82-238).
Conjugation	Un-conjugated
Alternate Names	ELA3B; CBPP; EC 3.4.21.70; Elastase-3B; Chymotrypsin-like elastase family member 3B; Elastase IIIB; EL-1; Protease E; E1

Application Instructions

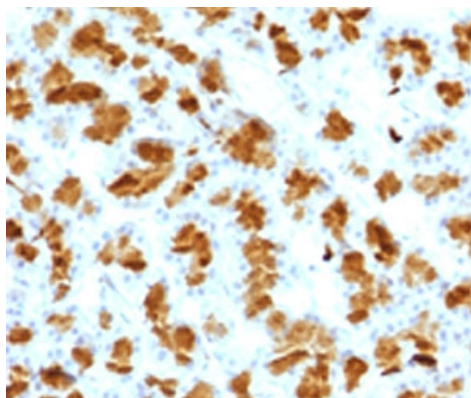
Application table	Application	Dilution
	IHC-P	1 - 2 µg/ml
Application Note	* The dilutions indicate recommended starting dilutions and the optimal dilutions or concentrations should be determined by the scientist.	

Properties

Form	Liquid
Purification	Purification with Protein G.
Buffer	PBS (pH 7.4), 0.05% Sodium azide and 0.1 mg/ml BSA.
Preservative	0.05% Sodium azide
Stabilizer	0.1 mg/ml BSA
Concentration	0.2 mg/ml
Storage instruction	For continuous use, store undiluted antibody at 2-8°C for up to a week. For long-term storage, aliquot and store at -20°C or below. Storage in frost free freezers is not recommended. Avoid repeated freeze/thaw cycles. Suggest spin the vial prior to opening. The antibody solution should be gently mixed before use.
Note	For laboratory research only, not for drug, diagnostic or other use.

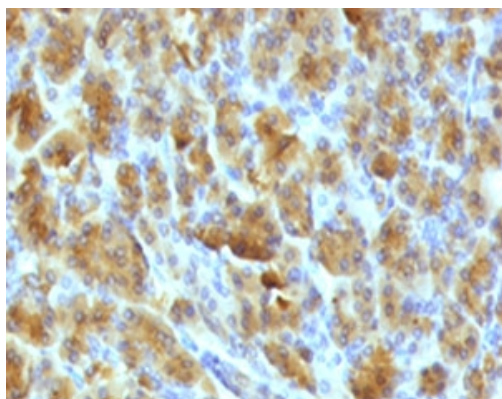
Database links	GeneID: 23436 Human
	GeneID: 67868 Mouse
	Swiss-port # P08861 Human
	Swiss-port # Q9CQ52 Mouse
Gene Symbol	CELA3B
Gene Full Name	chymotrypsin-like elastase family, member 3B
Background	<p>Elastases form a subfamily of serine proteases that hydrolyze many proteins in addition to elastin. Humans have six elastase genes which encode the structurally similar proteins elastase 1, 2, 2A, 2B, 3A, and 3B. Unlike other elastases, elastase 3B has little elastolytic activity. Like most of the human elastases, elastase 3B is secreted from the pancreas as a zymogen and, like other serine proteases such as trypsin, chymotrypsin and kallikrein, it has a digestive function in the intestine. Elastase 3B preferentially cleaves proteins after alanine residues. Elastase 3B may also function in the intestinal transport and metabolism of cholesterol. Both elastase 3A and elastase 3B have been referred to as protease E and as elastase 1, and excretion of this protein in fecal material is frequently used as a measure of pancreatic function in clinical assays. [provided by RefSeq, May 2009]</p>
Function	Efficient protease with alanine specificity but only little elastolytic activity. [UniProt]
Calculated Mw	29 kDa

Images



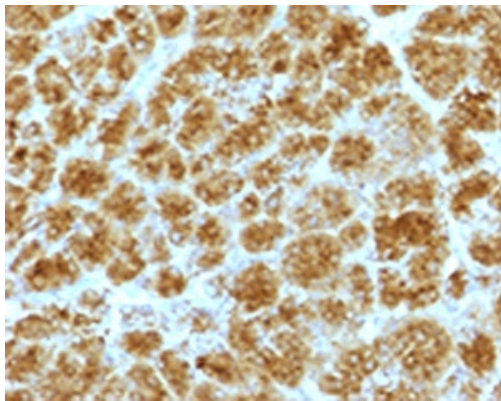
ARG56205 anti-CELA3B / Elastase 3B antibody [ELTS3B-2] IHC-P image

Immunohistochemistry: Formalin-fixed and paraffin-embedded Rat pancreas stained with ARG56205 anti-CELA3B / Elastase 3B antibody [ELTS3B-2].



ARG56205 anti-CELA3B / Elastase 3B antibody [ELTS3B-2] IHC-P image

Immunohistochemistry: Formalin-fixed and paraffin-embedded Mouse pancreas stained with ARG56205 anti-CELA3B / Elastase 3B antibody [ELTS3B-2].



ARG56205 anti-CELA3B / Elastase 3B antibody [ELTS3B-2] IHC-P image

Immunohistochemistry: Formalin-fixed and paraffin-embedded Human pancreas stained with ARG56205 anti-CELA3B / Elastase 3B antibody [ELTS3B-2].