

ARG56282 anti-FUT6 antibody

Package: 100 µl
Store at: -20°C

Summary

Product Description	Rabbit Polyclonal antibody recognizes FUT6
Tested Reactivity	Hu
Tested Application	IHC-P, WB
Host	Rabbit
Clonality	Polyclonal
Isotype	IgG
Target Name	FUT6
Species	Human
Immunogen	Recombinant protein of Human FUT6
Conjugation	Un-conjugated
Alternate Names	FT1A; FCT3A; Fuc-TVI; FucT-VI; Alpha-(1,3)-fucosyltransferase 6; EC 2.4.1.65; Fucosyltransferase 6; Fucosyltransferase VI; Fuc-TVI; FucT-VI; Galactoside 3-L-fucosyltransferase

Application Instructions

Application table	Application	Dilution
	IHC-P	
	WB	1:500 - 1:2000
Application Note	* The dilutions indicate recommended starting dilutions and the optimal dilutions or concentrations should be determined by the scientist.	
Positive Control	SW480	

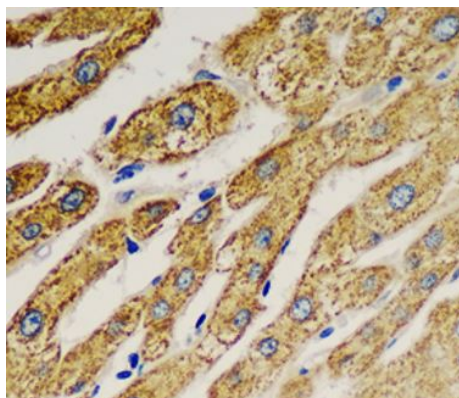
Properties

Form	Liquid
Purification	Affinity purification with immunogen.
Buffer	PBS (pH 7.3), 0.02% Sodium azide and 50% Glycerol.
Preservative	0.02% Sodium azide
Stabilizer	50% Glycerol
Storage instruction	For continuous use, store undiluted antibody at 2-8°C for up to a week. For long-term storage, aliquot and store at -20°C. Storage in frost free freezers is not recommended. Avoid repeated freeze/thaw cycles. Suggest spin the vial prior to opening. The antibody solution should be gently mixed before use.
Note	For laboratory research only, not for drug, diagnostic or other use.

Bioinformation

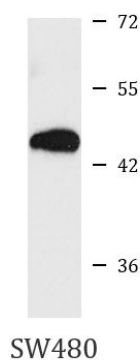
Database links	GeneID: 2528 Human Swiss-port # P51993 Human
Gene Symbol	FUT6
Gene Full Name	fucosyltransferase 6 (alpha (1,3) fucosyltransferase)
Background	The protein encoded by this gene is a Golgi stack membrane protein that is involved in the creation of sialyl-Lewis X, an E-selectin ligand. Mutations in this gene are a cause of fucosyltransferase-6 deficiency. Two transcript variants encoding the same protein have been found for this gene. [provided by RefSeq, Jul 2008]
Function	Enzyme involved in the biosynthesis of the E-Selectin ligand, sialyl-Lewis X. Catalyzes the transfer of fucose from GDP-beta-fucose to alpha-2,3 sialylated substrates. [UniProt]
Calculated Mw	42 kDa

Images



ARG56282 anti-FUT6 antibody IHC-P image

Immunohistochemistry: Paraffin-embedded Human liver stained with ARG56282 anti-FUT6 antibody at 1:100 dilution.



ARG56282 anti-FUT6 antibody WB image

Western blot: SW480 cell lysate stained with ARG56282 anti-FUT6 antibody.