

ARG56338 anti-TOMM20 antibody

Package: 100 µl
Store at: -20°C

Summary

Product Description	Rabbit Polyclonal antibody recognizes TOMM20
Tested Reactivity	Hu, Ms, Rat
Tested Application	ICC/IF, IHC-P, IP, WB
Host	Rabbit
Clonality	Polyclonal
Isotype	IgG
Target Name	TOMM20
Species	Human
Immunogen	Recombinant protein of Human TOMM20
Conjugation	Un-conjugated
Alternate Names	Outer mitochondrial membrane receptor Tom20; MAS20; Mitochondrial 20 kDa outer membrane protein; MOM19; Mitochondrial import receptor subunit TOM20 homolog; TOM20

Application Instructions

Application table	Application	Dilution
	ICC/IF	1:50 - 1:100
	IHC-P	1:50 - 1:100
	IP	Assay-dependent
	WB	1:500 - 1:1000
Application Note	* The dilutions indicate recommended starting dilutions and the optimal dilutions or concentrations should be determined by the scientist.	
Positive Control	HepG2	

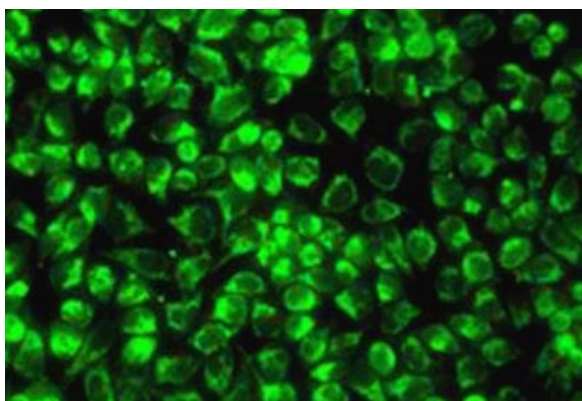
Properties

Form	Liquid
Purification	Affinity purification with immunogen.
Buffer	PBS (pH 7.3), 0.02% Sodium azide and 50% Glycerol.
Preservative	0.02% Sodium azide
Stabilizer	50% Glycerol
Storage instruction	For continuous use, store undiluted antibody at 2-8°C for up to a week. For long-term storage, aliquot and store at -20°C. Storage in frost free freezers is not recommended. Avoid repeated freeze/thaw cycles. Suggest spin the vial prior to opening. The antibody solution should be gently mixed before use.

Bioinformation

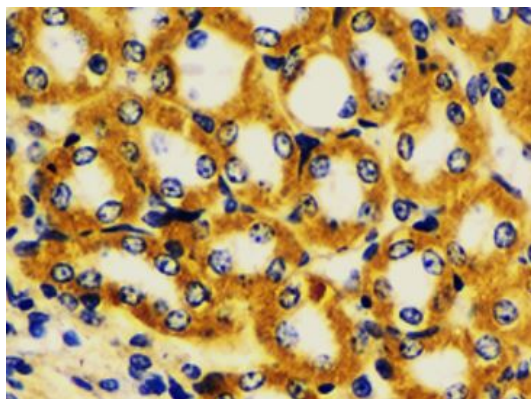
Gene Symbol	TOMM20
Gene Full Name	translocase of outer mitochondrial membrane 20 homolog (yeast)
Function	Central component of the receptor complex responsible for the recognition and translocation of cytosolically synthesized mitochondrial preproteins. Together with TOM22 functions as the transit peptide receptor at the surface of the mitochondrion outer membrane and facilitates the movement of preproteins into the TOM40 translocation pore (By similarity). [UniProt]
Calculated Mw	16 kDa
PTM	Ubiquitinated by PRKN during mitophagy, leading to its degradation and enhancement of mitophagy. Deubiquitinated by USP30.

Images



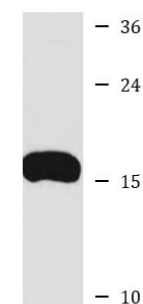
ARG56338 anti-TOMM20 antibody ICC/IF image

Immunofluorescence: A549 cells stained with ARG56338 anti-TOMM20 antibody.



ARG56338 anti-TOMM20 antibody IHC-P image

Immunohistochemistry: Paraffin-embedded Mouse kidney stained with ARG56338 anti-TOMM20 antibody at 1:100 dilution.



HepG2

ARG56338 anti-TOMM20 antibody WB image

Western blot: HepG2 cell lysate stained with ARG56338 anti-TOMM20 antibody.