

ARG56354
anti-BRCC2 antibodyPackage: 100 µl
Store at: -20°C

Summary

Product Description	Rabbit Polyclonal antibody recognizes BRCC2
Tested Reactivity	Hu, Ms, Rat
Tested Application	ICC/IF, WB
Host	Rabbit
Clonality	Polyclonal
Isotype	IgG
Target Name	BRCC2
Species	Human
Immunogen	Recombinant protein of Human BRCC2
Conjugation	Un-conjugated
Alternate Names	BH3-like motif-containing cell death inducer; Breast cancer cell protein 2; BRCC2

Application Instructions

Application table	Application	Dilution
	ICC/IF	1:50 - 1:100
	WB	1:500 - 1:2000
Application Note	* The dilutions indicate recommended starting dilutions and the optimal dilutions or concentrations should be determined by the scientist.	
Positive Control	MCF7	

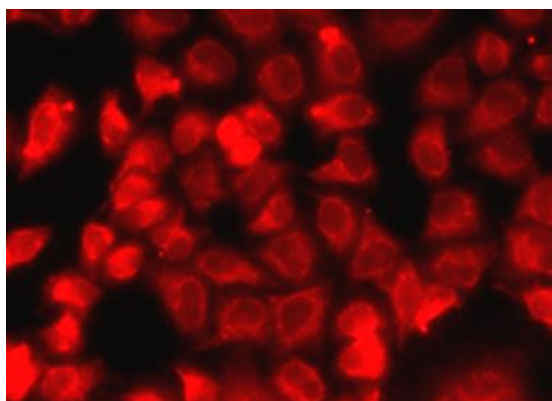
Properties

Form	Liquid
Purification	Affinity purification with immunogen.
Buffer	PBS (pH 7.3), 0.02% Sodium azide and 50% Glycerol.
Preservative	0.02% Sodium azide
Stabilizer	50% Glycerol
Storage instruction	For continuous use, store undiluted antibody at 2-8°C for up to a week. For long-term storage, aliquot and store at -20°C. Storage in frost free freezers is not recommended. Avoid repeated freeze/thaw cycles. Suggest spin the vial prior to opening. The antibody solution should be gently mixed before use.
Note	For laboratory research only, not for drug, diagnostic or other use.

Bioinformation

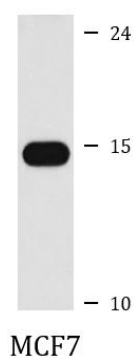
Database links	GeneID: 414899 Human Swiss-port # Q8IZY5 Human
Gene Symbol	BLID
Gene Full Name	BH3-like motif containing, cell death inducer
Background	This gene encodes a BH3-like motif containing protein involved in cell death. The encoded protein may induce apoptosis in a caspase-dependent manner. The protein is localized in both the cytoplasm and the mitochondrion. [provided by RefSeq, Aug 2011]
Function	Functions as a proapoptotic molecule through the caspase-dependent mitochondrial pathway of cell death. [UniProt]
Calculated Mw	12 kDa

Images



ARG56354 anti-BRCC2 antibody ICC/IF image

Immunofluorescence: MCF7 cells stained with ARG56354 anti-BRCC2 antibody.



ARG56354 anti-BRCC2 antibody WB image

Western blot: MCF7 cell lysate stained with ARG56354 anti-BRCC2 antibody.