

ARG56355 anti-L3MBTL3 antibody

Package: 100 µl
Store at: -20°C

Summary

Product Description	Rabbit Polyclonal antibody recognizes L3MBTL3
Tested Reactivity	Hu, Ms
Tested Application	ICC/IF, IHC-P, WB
Host	Rabbit
Clonality	Polyclonal
Isotype	IgG
Target Name	L3MBTL3
Species	Human
Immunogen	Recombinant protein of Human L3MBTL3
Conjugation	Un-conjugated
Alternate Names	MBT1; MBT-1; Lethal(3)malignant brain tumor-like protein 3; H-l(3)mbt-like protein 3; L(3)mbt-like protein 3; MBT-1

Application Instructions

Application table	Application	Dilution
	ICC/IF	1:50 - 1:200
	IHC-P	1:50 - 1:200
	WB	1:500 - 1:2000
Application Note	* The dilutions indicate recommended starting dilutions and the optimal dilutions or concentrations should be determined by the scientist.	
Positive Control	U251	

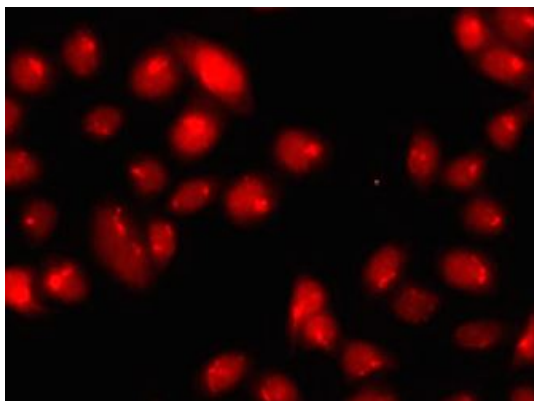
Properties

Form	Liquid
Purification	Affinity purification with immunogen.
Buffer	PBS (pH 7.3), 0.02% Sodium azide and 50% Glycerol.
Preservative	0.02% Sodium azide
Stabilizer	50% Glycerol
Storage instruction	For continuous use, store undiluted antibody at 2-8°C for up to a week. For long-term storage, aliquot and store at -20°C. Storage in frost free freezers is not recommended. Avoid repeated freeze/thaw cycles. Suggest spin the vial prior to opening. The antibody solution should be gently mixed before use.
Note	For laboratory research only, not for drug, diagnostic or other use.

Bioinformation

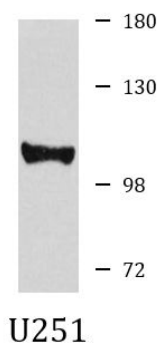
Database links	GeneID: 237339 Mouse
	GeneID: 84456 Human
	Swiss-port # Q8BLB7 Mouse
	Swiss-port # Q96JM7 Human
Gene Symbol	L3MBTL3
Gene Full Name	l(3)mbt-like 3 (Drosophila)
Function	Putative Polycomb group (PcG) protein. PcG proteins maintain the transcriptionally repressive state of genes, probably via a modification of chromatin, rendering it heritably changed in its expressibility. Required for normal maturation of myeloid progenitor cells (By similarity). [UniProt]
Calculated Mw	88 kDa

Images



ARG56355 anti-L3MBTL3 antibody ICC/IF image

Immunofluorescence: MCF7 cells stained with ARG56355 anti-L3MBTL3 antibody.



ARG56355 anti-L3MBTL3 antibody WB image

Western blot: U251 cell lysate stained with ARG56355 anti-L3MBTL3 antibody.