

## ARG56384 anti-CCDC52 / SPICE1 antibody

Package: 100 µl  
Store at: -20°C

### Summary

Product Description	Rabbit Polyclonal antibody recognizes CCDC52 / SPICE1
Tested Reactivity	Hu, Ms, Rat
Tested Application	WB
Host	Rabbit
Clonality	Polyclonal
Isotype	IgG
Target Name	CCDC52 / SPICE1
Species	Human
Immunogen	Recombinant protein of Human CCDC52 / SPICE1
Conjugation	Un-conjugated
Alternate Names	Spindle and centriole-associated protein 1; CCDC52; Coiled-coil domain-containing protein 52; Spindle and centriole-associated protein; SPICE

### Application Instructions

Application table	Application	Dilution
	WB	1:500 - 1:2000
Application Note	* The dilutions indicate recommended starting dilutions and the optimal dilutions or concentrations should be determined by the scientist.	
Positive Control	MCF7	

### Properties

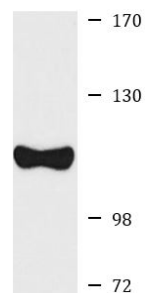
Form	Liquid
Purification	Affinity purification with immunogen.
Buffer	PBS (pH 7.3), 0.02% Sodium azide and 50% Glycerol.
Preservative	0.02% sodium azide
Stabilizer	50% Glycerol
Storage instruction	For continuous use, store undiluted antibody at 2-8°C for up to a week. For long-term storage, aliquot and store at -20°C. Storage in frost free freezers is not recommended. Avoid repeated freeze/thaw cycles. Suggest spin the vial prior to opening. The antibody solution should be gently mixed before use.
Note	For laboratory research only, not for drug, diagnostic or other use.

### Bioinformation

Gene Symbol	SPICE1
Gene Full Name	spindle and centriole associated protein 1
Function	Regulator required for centriole duplication, for proper bipolar spindle formation and chromosome congression in mitosis. [UniProt]
Calculated Mw	96 kDa

## Images

---



MCF7

ARG56384 anti-CCDC52 / SPICE1 antibody WB image

Western blot: MCF7 cell lysate stained with ARG56384 anti-CCDC52 / SPICE1 antibody.