

ARG56407 anti-ORMDL3 antibody

Package: 100 µl
Store at: -20°C

Summary

Product Description	Rabbit Polyclonal antibody recognizes ORMDL3
Tested Reactivity	Hu, Ms
Predict Reactivity	Bov, Rat, Xenopus, Zfsh
Tested Application	WB
Host	Rabbit
Clonality	Polyclonal
Isotype	IgG
Target Name	ORMDL3
Species	Human
Immunogen	KLH-conjugated synthetic peptide corresponding to aa. 53-81 (Center) of Human ORMDL3.
Conjugation	Un-conjugated
Alternate Names	ORM1-like protein 3

Application Instructions

Application table	Application	Dilution
	WB	1:1000
Application Note	* The dilutions indicate recommended starting dilutions and the optimal dilutions or concentrations should be determined by the scientist.	
Positive Control	Mouse testis	

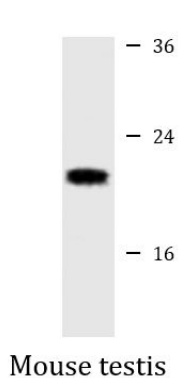
Properties

Form	Liquid
Purification	Purification with Protein A and immunogen peptide.
Buffer	PBS and 0.09% (W/V) Sodium azide.
Preservative	0.09% (W/V) Sodium azide.
Storage instruction	For continuous use, store undiluted antibody at 2-8°C for up to a week. For long-term storage, aliquot and store at -20°C or below. Storage in frost free freezers is not recommended. Avoid repeated freeze/thaw cycles. Suggest spin the vial prior to opening. The antibody solution should be gently mixed before use.
Note	For laboratory research only, not for drug, diagnostic or other use.

Bioinformation

Database links	GeneID: 66612 Mouse
	GeneID: 94103 Human
	Swiss-port # Q8N138 Human
	Swiss-port # Q9CPZ6 Mouse
Gene Symbol	ORMDL3
Gene Full Name	ORMDL sphingolipid biosynthesis regulator 3
Function	Negative regulator of sphingolipid synthesis. May indirectly regulate endoplasmic reticulum-mediated Ca(+2) signaling. [UniProt]
Calculated Mw	17 kDa
Cellular Localization	Endoplasmic reticulum membrane; Multi- pass membrane protein

Images



ARG56407 anti-ORMDL3 antibody WB image

Western blot: 20 µg of Mouse testis lysate stained with ARG56407 anti-ORMDL3 antibody at 1:1000 dilution.