

## ARG56413 anti-CX3CR1 antibody

Package: 50 µg  
Store at: -20°C

### Summary

Product Description	Rabbit Polyclonal antibody recognizes CX3CR1
Tested Reactivity	Hu, Rat
Tested Application	FACS, ICC/IF, IHC-P, WB
Host	Rabbit
Clonality	Polyclonal
Isotype	IgG
Target Name	CX3CR1
Species	Human
Immunogen	Synthetic peptide (20 aa) within the first 50 aa of Human CX3CR1.
Conjugation	Un-conjugated
Alternate Names	CMK-BRL1; GPR13; CX3CR1; CMK-BRL-1; C-X3-C CKR-1; CX3C chemokine receptor 1; V28; CCRL1; GPRV28; CMKBRL1; G-protein coupled receptor 13; CMKDR1; Beta chemokine receptor-like 1; Fractalkine receptor

### Application Instructions

Application table	Application	Dilution
	FACS	0.1 µg/ml
	ICC/IF	10 µg/ml
	IHC-P	2 µg/ml
	WB	0.5 - 1 µg/ml
Application Note	* The dilutions indicate recommended starting dilutions and the optimal dilutions or concentrations should be determined by the scientist.	
Positive Control	Human Spleen Tissue Lysate	

### Properties

Form	Liquid
Purification	Affinity purification with immunogen.
Buffer	PBS and 0.02% Sodium azide
Preservative	0.02% Sodium azide
Concentration	1 mg/ml
Storage instruction	For continuous use, store undiluted antibody at 2-8°C for up to a week. For long-term storage, aliquot and store at -20°C or below. Storage in frost free freezers is not recommended. Avoid repeated freeze/thaw cycles. Suggest spin the vial prior to opening. The antibody solution should be gently mixed

before use.

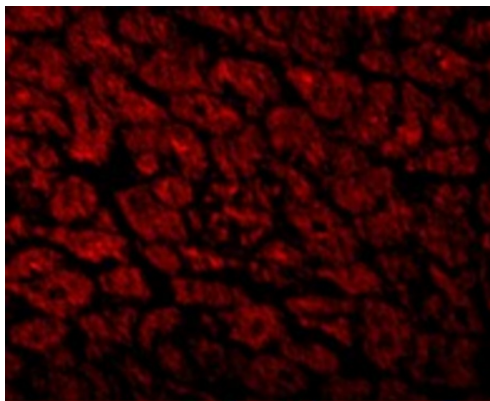
#### Note

For laboratory research only, not for drug, diagnostic or other use.

## Bioinformation

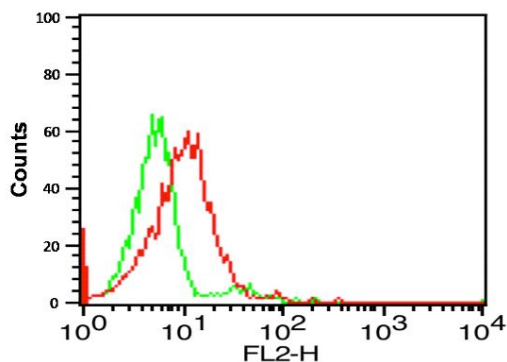
Database links	<a href="#">GeneID: 1524 Human</a> <a href="#">GeneID: 171056 Rat</a> <a href="#">Swiss-port # P35411 Rat</a> <a href="#">Swiss-port # P49238 Human</a>
Gene Symbol	CX3CR1
Gene Full Name	chemokine (C-X3-C motif) receptor 1
Background	Fractalkine is a transmembrane protein and chemokine involved in the adhesion and migration of leukocytes. The protein encoded by this gene is a receptor for fractalkine. The encoded protein also is a coreceptor for HIV-1, and some variations in this gene lead to increased susceptibility to HIV-1 infection and rapid progression to AIDS. Four transcript variants encoding two different isoforms have been found for this gene. [provided by RefSeq, Jan 2010]
Function	Receptor for the CX3C chemokine fractalkine and mediates both its adhesive and migratory functions. Acts as coreceptor with CD4 for HIV-1 virus envelope protein (in vitro). Isoform 2 and isoform 3 seem to be more potent HIV-1 coreceptors than isoform 1. [UniProt]
Calculated Mw	40 kDa
PTM	This protein is not N-glycosylated which is unusual for G-protein-coupled receptors.

## Images



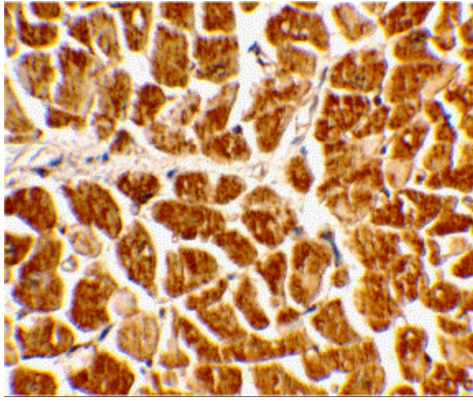
ARG56413 anti-CX3CR1 antibody ICC/IF image

Immunofluorescence: Human Heart cells stained with ARG56413 anti-CX3CR1 antibody at 10 ug/ml dilution.



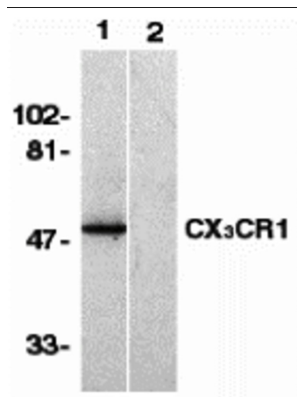
ARG56413 anti-CX3CR1 antibody FACS image

Flow Cytometry: THP-1 cells stained with ARG56413 anti-CX3CR1 antibody at 0.1 µg/ml dilution. Green: Isotype control. Red: primary antibody.



ARG56413 anti-CX3CR1 antibody IHC-P image

Immunohistochemistry: Human heart tissue stained with ARG56413 anti-CX3CR1 antibody at 2 ug/ml dilution.



ARG56413 anti-CX3CR1 antibody WB image

Western blot: Human spleen lysate stained with ARG56413 anti-CX3CR1 antibody at 1 µg/ml dilution in the absence (lane 1) or presence of blocking peptide (lane 2).