

## ARG56416 anti-Tollip antibody

Package: 100 µl  
Store at: -20°C

### Summary

Product Description	Rabbit Polyclonal antibody recognizes Tollip
Tested Reactivity	Hu, Ms, Rat
Tested Application	ICC/IF, IHC-P, WB
Host	Rabbit
Clonality	Polyclonal
Isotype	IgG
Target Name	Tollip
Species	Human
Immunogen	Recombinant protein of Human Tollip.
Conjugation	Un-conjugated
Alternate Names	Toll-interacting protein; IL-1RAcPIP

### Application Instructions

Application table	Application	Dilution
	ICC/IF	1:50 - 1:200
	IHC-P	1:50 - 1:200
	WB	1:500 - 1:2000
Application Note	* The dilutions indicate recommended starting dilutions and the optimal dilutions or concentrations should be determined by the scientist.	
Positive Control	SW480	

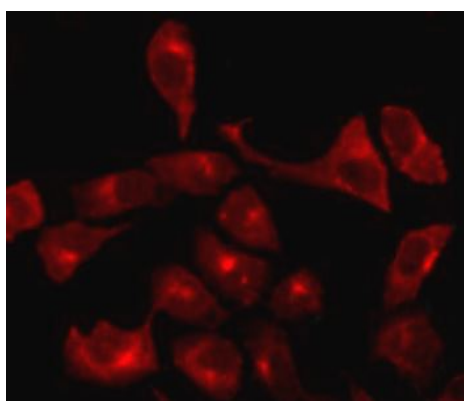
### Properties

Form	Liquid
Purification	Affinity purification with immunogen.
Buffer	PBS (pH 7.3), 0.02% Sodium azide and 50% Glycerol.
Preservative	0.02% Sodium azide
Stabilizer	50% Glycerol
Storage instruction	For continuous use, store undiluted antibody at 2-8°C for up to a week. For long-term storage, aliquot and store at -20°C. Storage in frost free freezers is not recommended. Avoid repeated freeze/thaw cycles. Suggest spin the vial prior to opening. The antibody solution should be gently mixed before use.
Note	For laboratory research only, not for drug, diagnostic or other use.

## Bioinformation

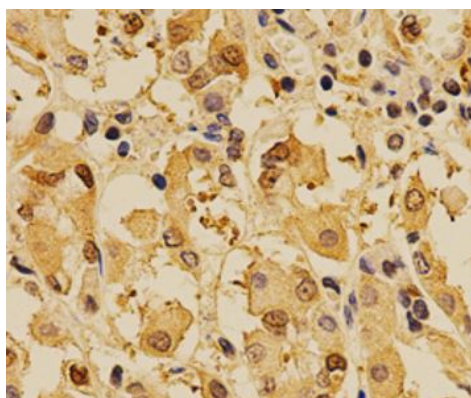
Gene Symbol	TOLLIP
Gene Full Name	toll interacting protein
Background	This gene encodes a ubiquitin-binding protein that interacts with several Toll-like receptor (TLR) signaling cascade components. The encoded protein regulates inflammatory signaling and is involved in interleukin-1 receptor trafficking and in the turnover of IL1R-associated kinase. [provided by RefSeq, Aug 2011]
Function	Component of the signaling pathway of IL-1 and Toll-like receptors. Inhibits cell activation by microbial products. Recruits IRAK1 to the IL-1 receptor complex. Inhibits IRAK1 phosphorylation and kinase activity. Connects the ubiquitin pathway to autophagy by functioning as a ubiquitin-ATG8 family adapter and thus mediating autophagic clearance of ubiquitin conjugates. The TOLLIP-dependent selective autophagy pathway plays an important role in clearance of cytotoxic polyQ proteins aggregates. [UniProt]
Calculated Mw	30 kDa
PTM	Phosphorylated by IRAK1 upon stimulation by IL-1 or microbial products.

## Images



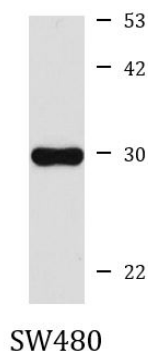
ARG56416 anti-Tollip antibody ICC/IF image

Immunofluorescence: U2OS cells stained with ARG56416 anti-Tollip antibody.



ARG56416 anti-Tollip antibody IHC-P image

Immunohistochemistry: Paraffin-embedded Human stomach stained with ARG56416 anti-Tollip antibody at 1:200 dilution.



ARG56416 anti-Tollip antibody WB image

Western blot: SW480 cell lysate stained with ARG56416 anti-Tollip antibody.