

## ARG56496 anti-Prostaglandin E Synthase (cytosolic) antibody

Package: 250 µl  
Store at: -20°C

### Summary

Product Description	Rabbit Polyclonal antibody recognizes Prostaglandin E Synthase (cytosolic)
Tested Reactivity	Hu, Ms, Sheep
Tested Application	WB
Specificity	This antibody does not react to Human recombinant mPGES.
Host	Rabbit
Clonality	Polyclonal
Isotype	IgG
Target Name	Prostaglandin E Synthase (cytosolic)
Species	Human
Immunogen	Synthetic peptide around an internal region of Human Prostaglandin E Synthase (cytosolic).
Conjugation	Un-conjugated
Alternate Names	EC 5.3.99.3; Progesterone receptor complex p23; TEBP; Hsp90 co-chaperone; P23; cPGES; Cytosolic prostaglandin E2 synthase; Prostaglandin E synthase 3; Telomerase-binding protein p23

### Application Instructions

Application table	Application	Dilution
	WB	1:200
Application Note	* The dilutions indicate recommended starting dilutions and the optimal dilutions or concentrations should be determined by the scientist.	

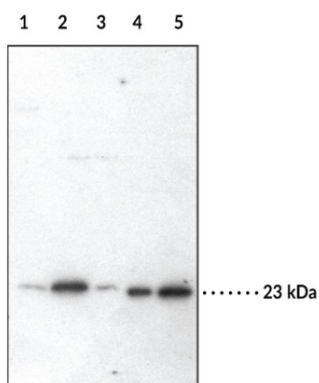
### Properties

Form	Liquid
Purification	Affinity purification with immunogen.
Buffer	TBS (pH 7.4), 0.02% Sodium azide, 50% Glycerol and 0.1% BSA.
Preservative	0.02% Sodium azide
Stabilizer	50% Glycerol and 0.1% BSA
Storage instruction	For continuous use, store undiluted antibody at 2-8°C for up to a week. For long-term storage, aliquot and store at -20°C. Storage in frost free freezers is not recommended. Avoid repeated freeze/thaw cycles. Suggest spin the vial prior to opening. The antibody solution should be gently mixed before use.
Note	For laboratory research only, not for drug, diagnostic or other use.

### Bioinformation

Database links	<a href="#">GeneID: 10728 Human</a>
	<a href="#">GeneID: 56351 Mouse</a>
	<a href="#">Swiss-port # Q15185 Human</a>
	<a href="#">Swiss-port # Q9R0Q7 Mouse</a>
Gene Symbol	PTGES3
Gene Full Name	prostaglandin E synthase 3 (cytosolic)
Function	Cytosolic prostaglandin synthase that catalyzes the oxidoreduction of prostaglandin endoperoxide H2 (PGH2) to prostaglandin E2 (PGE2). Molecular chaperone that localizes to genomic response elements in a hormone-dependent manner and disrupts receptor-mediated transcriptional activation, by promoting disassembly of transcriptional regulatory complexes. Facilitates HIF alpha proteins hydroxylation via interaction with EGLN1/PHD2, leading to recruit EGLN1/PHD2 to the HSP90 pathway. [UniProt]
Calculated Mw	19 kDa

## Images



ARG56496 anti-Prostaglandin E Synthase (cytosolic) antibody WB image

Western blot: 1) 30 µg of Ram seminal vesicle microsomes, 2) Jurket (Mouse) cell lysate, 3) 30 µg of A549 cell lysate, 4) 0.04 µg of Recombinant Human cPGES, and 5) 0.10 µg of Recombinant Human cPGES stained with ARG56496 anti-Prostaglandin E Synthase (cytosolic) antibody.