

ARG56512 anti-Guanylate Cyclase beta 1 antibody

Package: 250 µl
Store at: -20°C

Summary

Product Description	Rabbit Polyclonal antibody recognizes Guanylate Cyclase beta 1
Tested Reactivity	Hu, Rat, Bov
Tested Application	IHC-P, WB
Specificity	This antibody does not react to guanylate cyclase α 1 subunit.
Host	Rabbit
Clonality	Polyclonal
Isotype	IgG
Target Name	Guanylate Cyclase beta 1
Species	Rat
Immunogen	Synthetic peptide around aa. 188-207 of Rat Guanylate Cyclase beta1 (soluble). (EDFYEDLDRFEENGTDQSR; last D=E in Human and Bovine)
Conjugation	Un-conjugated
Alternate Names	GC-S-beta-1; GUC1B3; GUCSB3; Soluble guanylate cyclase small subunit; GCS-beta-1; GUCY1B1; GCS-beta-3; GUCB3; EC 4.6.1.2; Guanylate cyclase soluble subunit beta-3; GC-SB3; Guanylate cyclase soluble subunit beta-1

Application Instructions

Application table	Application	Dilution
	IHC-P	1:1000
	WB	1:200
Application Note	* The dilutions indicate recommended starting dilutions and the optimal dilutions or concentrations should be determined by the scientist.	

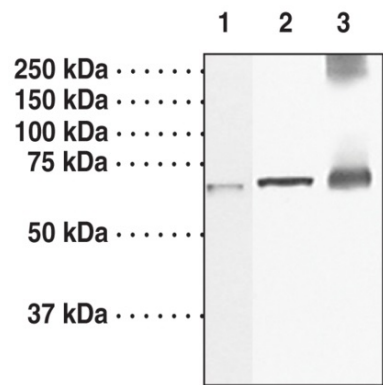
Properties

Form	Liquid
Purification	Affinity purification with immunogen.
Buffer	TBS (pH 7.4) and 5 mg/ml BSA.
Stabilizer	5 mg/ml BSA
Storage instruction	For continuous use, store undiluted antibody at 2-8°C for up to a week. For long-term storage, aliquot and store at -20°C or below. Storage in frost free freezers is not recommended. Avoid repeated freeze/thaw cycles. Suggest spin the vial prior to opening. The antibody solution should be gently mixed before use.
Note	For laboratory research only, not for drug, diagnostic or other use.

Bioinformation

Gene Symbol	Gucy1b3
Gene Full Name	guanylate cyclase 1, soluble, beta 3
Background	This gene encodes the beta subunit of the soluble guanylate cyclase (sGC), which catalyzes the conversion of GTP (guanosine triphosphate) to cGMP (cyclic guanosine monophosphate). The encoded protein contains an HNOX domain, which serves as a receptor for ligands such as nitric oxide, oxygen and nitrovasodilator drugs. Alternative splicing results in multiple transcript variants. [provided by RefSeq, May 2014]
Calculated Mw	71 kDa

Images



ARG56512 anti-Guanylate Cyclase beta 1 antibody WB image

Western blot: 1) 75 µg of Bovine lung membrane, 2) 25 µg of Mouse brain supernatant, and 3) 25 µg of Bovine lung supernatant stained with ARG56512 anti-Guanylate Cyclase beta 1 antibody.