

ARG56529
anti-GPCR GPR35 antibodyPackage: 250 µl
Store at: -20°C

Summary

Product Description	Rabbit Polyclonal antibody recognizes GPCR GPR35
Tested Reactivity	Hu, Ms, Pig
Tested Application	IHC-P, WB
Host	Rabbit
Clonality	Polyclonal
Isotype	IgG
Target Name	GPCR GPR35
Species	Human
Immunogen	Synthetic peptide around the C-terminus of Human GPCR GPR35.
Conjugation	Un-conjugated
Alternate Names	G-protein coupled receptor 35; KYNA receptor; Kynurenic acid receptor

Application Instructions

Application table	Application	Dilution
	IHC-P	1:100
	WB	1:200
Application Note	* The dilutions indicate recommended starting dilutions and the optimal dilutions or concentrations should be determined by the scientist.	

Properties

Form	Liquid
Purification	Affinity purification with immunogen.
Storage instruction	For continuous use, store undiluted antibody at 2-8°C for up to a week. For long-term storage, aliquot and store at -20°C. Storage in frost free freezers is not recommended. Avoid repeated freeze/thaw cycles. Suggest spin the vial prior to opening. The antibody solution should be gently mixed before use.
Note	For laboratory research only, not for drug, diagnostic or other use.

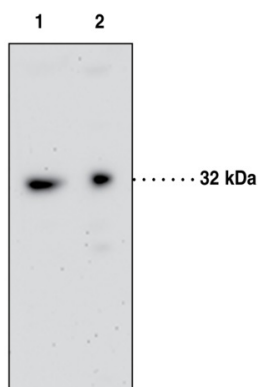
Bioinformation

Database links	GeneID: 2859 Human
	GeneID: 64095 Mouse
	Swiss-port # Q9ES90 Mouse

[Swiss-port # Q9HC97 Human](#)

Gene Symbol	GPR35
Gene Full Name	G protein-coupled receptor 35
Function	Acts as a receptor for kynurenic acid, an intermediate in the tryptophan metabolic pathway. The activity of this receptor is mediated by G-proteins that elicit calcium mobilization and inositol phosphate production through G(qi/o) proteins. [UniProt]
Calculated Mw	34 kDa

Images



ARG56529 anti-GPCR GPR35 antibody WB image

Western blot: 1) 50 µg of Jurkat cell lysate ,and 2) 50 µg of U937 cell lysate stained with ARG56529 anti-GPCR GPR35 antibody.