

## ARG56538 anti-CB1 Receptor antibody

Package: 250 µl  
Store at: -20°C

### Summary

Product Description	Rabbit Polyclonal antibody recognizes CB1 Receptor
Tested Reactivity	Hu, Ms, Rat
Tested Application	IHC-P, WB
Host	Rabbit
Clonality	Polyclonal
Isotype	IgG
Target Name	CB1 Receptor
Species	Human
Immunogen	Synthetic peptide around the C-terminus of Human Cannabinoid Receptor 1.
Conjugation	Un-conjugated
Alternate Names	CB1K5; CNR; CB1R; Cannabinoid receptor 1; CB-R; CB1; CB1A; CANN6

### Application Instructions

Application table	Application	Dilution
	IHC-P	1:50
	WB	1:200
Application Note	* The dilutions indicate recommended starting dilutions and the optimal dilutions or concentrations should be determined by the scientist.	

### Properties

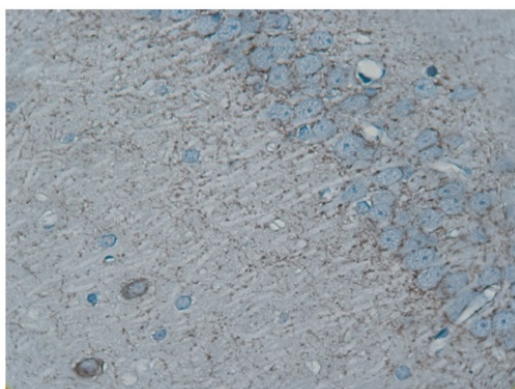
Form	Liquid
Purification	Affinity purification with immunogen.
Buffer	TBS (pH 7.4), 0.02% Sodium azide, 50% Glycerol and 0.1% BSA.
Preservative	0.02% Sodium azide
Stabilizer	50% Glycerol and 0.1% BSA
Storage instruction	For continuous use, store undiluted antibody at 2-8°C for up to a week. For long-term storage, aliquot and store at -20°C. Storage in frost free freezers is not recommended. Avoid repeated freeze/thaw cycles. Suggest spin the vial prior to opening. The antibody solution should be gently mixed before use.
Note	For laboratory research only, not for drug, diagnostic or other use.

### Bioinformation

Gene Symbol	CNR1
Gene Full Name	cannabinoid receptor 1 (brain)
Background	This gene encodes one of two cannabinoid receptors. The cannabinoids, principally delta-9-tetrahydrocannabinol and synthetic analogs, are psychoactive ingredients of marijuana. The cannabinoid receptors are members of the guanine-nucleotide-binding protein (G-protein) coupled receptor family, which inhibit adenylate cyclase activity in a dose-dependent, stereoselective and pertussis toxin-sensitive manner. The two receptors have been found to be involved in the cannabinoid-induced CNS effects (including alterations in mood and cognition) experienced by users of marijuana. Multiple transcript variants encoding two different protein isoforms have been described for this gene. [provided by RefSeq, May 2009]
Function	Involved in cannabinoid-induced CNS effects. Acts by inhibiting adenylate cyclase. Could be a receptor for anandamide. Inhibits L-type Ca(2+) channel current. Isoform 2 and isoform 3 have altered ligand binding. [UniProt]
Calculated Mw	53 kDa
PTM	Palmitoylation at Cys-415 is important for recruitment at both plasma membrane and lipid rafts.

## Images

---



ARG56538 anti-CB1 Receptor antibody IHC-P image

Immunohistochemistry: Paraffin-embedded CA region of Rat hippocampus stained with ARG56538 anti-CB1 Receptor antibody. Majority of the protein is localized in the pre-synaptic axons, shown as brown particles. A few neurons also show cytoplasm staining.

---