

ARG56564
anti-CRB3 antibody [14F9]Package: 50 µg
Store at: -20°C

Summary

Product Description	Rat Monoclonal antibody [14F9] recognizes CRB3
Tested Reactivity	Hu, Ms
Tested Application	ICC/IF, IHC-P, WB
Host	Rat
Clonality	Monoclonal
Clone	14F9
Isotype	IgG2c
Target Name	CRB3
Species	Human
Immunogen	Full length of Human CRB3 protein.
Conjugation	Un-conjugated
Alternate Names	Protein crumbs homolog 3

Application Instructions

Application table	Application	Dilution
	ICC/IF	1:100
	IHC-P	1:100
	WB	1:1000
Application Note	* The dilutions indicate recommended starting dilutions and the optimal dilutions or concentrations should be determined by the scientist.	

Properties

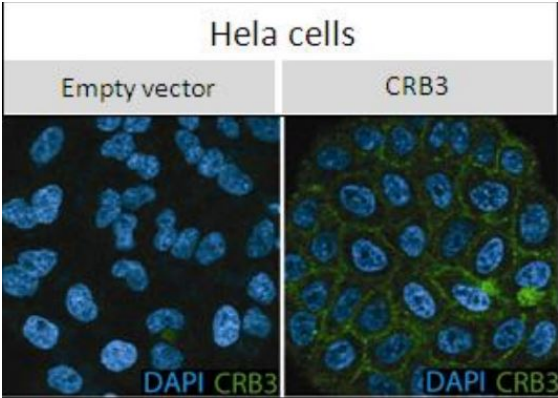
Form	Liquid
Purification	Purified.
Concentration	1 mg/ml
Storage instruction	For continuous use, store undiluted antibody at 2-8°C for up to a week. For long-term storage, aliquot and store at -20°C. Storage in frost free freezers is not recommended. Avoid repeated freeze/thaw cycles. Suggest spin the vial prior to opening. The antibody solution should be gently mixed before use.
Note	For laboratory research only, not for drug, diagnostic or other use.

Bioinformation

Database links	GeneID: 224912 Mouse
	GeneID: 92359 Human
	Swiss-port # Q8QZT4 Mouse
	Swiss-port # Q9BUF7 Human

Gene Symbol	CRB3
Gene Full Name	crumbs family member 3
Background	This gene encodes a member of the Crumbs family of proteins. This protein may play a role in epithelial cell polarity and is associated with tight junctions at the apical surface of epithelial cells. Alternate transcriptional splice variants, encoding different isoforms, have been characterized. [provided by RefSeq, Jul 2008]
Function	Involved in the establishment of cell polarity in mammalian epithelial cells. Regulates the morphogenesis of tight junctions. [UniProt]
Calculated Mw	13 kDa

Images



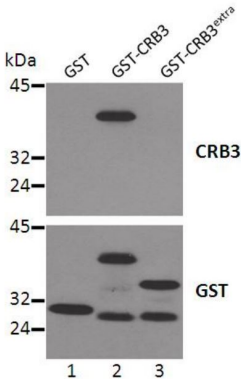
HeLa cells

Empty vector CRB3

DAPI CRB3 DAPI CRB3

ARG56564 anti-CRB3 antibody [14F9] ICC/IF image

Immunofluorescence: Overexpressed human CRB3 in lysates of HeLa cells stained with ARG56564 anti-CRB3 antibody [14F9].



kDa GST GST-CRB3 GST-CRB3extra

45—

32—

24—

CRB3

45—

32—

24—

GST

1 2 3

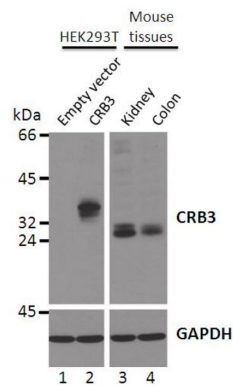
ARG56564 anti-CRB3 antibody [14F9] WB image

Western blot: analysis of full length CRB3 (GST-CRB3) but not the extracellular domain of CRB3 (GST-CRB3extra). ARG56564 anti-CRB3 antibody [14F9] was used at 1:1000 dilution.



ARG56564 anti-CRB3 antibody [14F9] ICC/IF image

Immunofluorescence: Endogenous human CRB3 expression in the mouse intestine stained with ARG56564 anti-CRB3 antibody [14F9]. DAPI was used to stain the nuclei in HeLa cells, whereas E-cadherin staining was used to highlight the lateral membrane in mouse intestine.



ARG56564 anti-CRB3 antibody [14F9] WB image

Western blot: analysis of overexpressed (HEK293T cells) and endogenous CRB3 (mouse tissues). The blots were stained with ARG56564 anti-CRB3 antibody [14F9].