

ARG56581
anti-SIDT2 antibodyPackage: 100 µl
Store at: -20°C

Summary

Product Description	Rabbit Polyclonal antibody recognizes SIDT2
Tested Reactivity	Hu, Ms
Predict Reactivity	Rat
Tested Application	WB
Host	Rabbit
Clonality	Polyclonal
Isotype	IgG
Target Name	SIDT2
Species	Human
Immunogen	KLH-conjugated synthetic peptide corresponding to aa. 418-447 (Center) of Human SIDT2.
Conjugation	Un-conjugated
Alternate Names	SID1 transmembrane family member 2; CGI-40

Application Instructions

Application table	Application	Dilution
	WB	1:1000
Application Note	* The dilutions indicate recommended starting dilutions and the optimal dilutions or concentrations should be determined by the scientist.	
Positive Control	Human placenta	

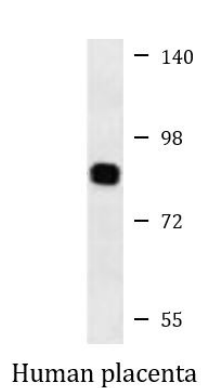
Properties

Form	Liquid
Purification	Purification with Protein A and immunogen peptide.
Buffer	PBS and 0.09% (W/V) Sodium azide.
Preservative	0.09% (W/V) Sodium azide.
Storage instruction	For continuous use, store undiluted antibody at 2-8°C for up to a week. For long-term storage, aliquot and store at -20°C or below. Storage in frost free freezers is not recommended. Avoid repeated freeze/thaw cycles. Suggest spin the vial prior to opening. The antibody solution should be gently mixed before use.
Note	For laboratory research only, not for drug, diagnostic or other use.

Bioinformation

Database links	GeneID: 214597 Mouse
	GeneID: 51092 Human
	Swiss-port # Q8CIF6 Mouse
	Swiss-port # Q8NBJ9 Human
Gene Symbol	SIDT2
Gene Full Name	SID1 transmembrane family, member 2
Calculated Mw	94 kDa
PTM	Glycosylated.
Cellular Localization	Lysosome membrane; Multi-pass membrane protein

Images



ARG56581 anti-SIDT2 antibody WB image

Western blot: 35 µg of Human placenta lysate stained with ARG56581 anti-SIDT2 antibody.