

## ARG56591 anti-IL6 antibody [1.2-2B11-2G10]

Package: 500 µg, 250 µg  
Store at: -20°C

### Summary

Product Description	Mouse Monoclonal antibody [1.2-2B11-2G10] recognizes IL6
Tested Reactivity	Hu, Rat
Tested Application	ELISA, ICC/IF, IHC-P, WB
Host	Mouse
Clonality	Monoclonal
Clone	1.2-2B11-2G10
Isotype	IgG1, kappa
Target Name	IL6
Species	Human
Immunogen	E.coli derived Recombinant Human IL-6. (PVPPGEDSKD VAAPHRQPLT SSERIDKQIR YILDGISALR KETCNKSNMC ESSKEALAEN NLNLPKMAEK DGCFQSGFNE ETCLVKIITG LLEFEVYLEY LQNRFESEEE QARAVQMSTK VLIQFLQKKA KNLDAITTPD PTTNASLLTK LQAQNQWLQD MTTHLILRSF KEFLQSSLRA LRQM)
Conjugation	Un-conjugated
Alternate Names	B-cell stimulatory factor 2; CDF; HSF; BSF-2; Interferon beta-2; IL-6; IFNB2; CTL differentiation factor; Interleukin-6; HGF; Hybridoma growth factor; BSF2; IFN-beta-2

### Application Instructions

Application table	Application	Dilution
	ELISA	1 - 2 µg/ml
	ICC/IF	Assay-dependent
	IHC-P	0.125 µg/ml
	WB	0.20 - 0.40 µg/ml
Application Note	Sandwich ELISA (Capture antibody - Detection antibody): ARG56591 (1 - 2 µg/ml) - <a href="#">ARG56736</a> (0.1 - 0.2 µg/ml) ARG56591 (1 - 2 µg/ml) - <a href="#">ARG56627</a> (0.1 - 0.2 µg/ml)  * The dilutions indicate recommended starting dilutions and the optimal dilutions or concentrations should be determined by the scientist.	

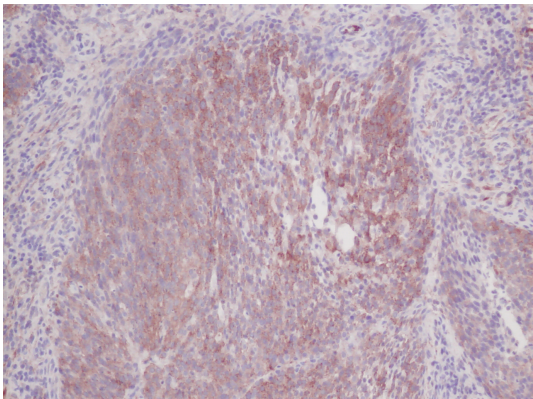
### Properties

Form	Liquid
Purification	Purification with Protein A.
Buffer	PBS (pH 7.2)

Concentration	1 mg/ml
Storage instruction	For continuous use, store undiluted antibody at 2-8°C for up to a week. For long-term storage, aliquot and store at -20°C or below. Storage in frost free freezers is not recommended. Avoid repeated freeze/thaw cycles. Suggest spin the vial prior to opening. The antibody solution should be gently mixed before use.
Note	For laboratory research only, not for drug, diagnostic or other use.

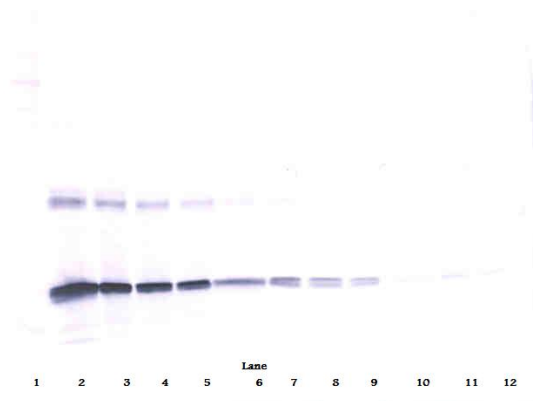
## Bioinformation

Database links	<a href="#">GeneID: 24498 Rat</a> <a href="#">GeneID: 3569 Human</a> <a href="#">Swiss-port # P05231 Human</a> <a href="#">Swiss-port # P20607 Rat</a>
Gene Symbol	IL6
Gene Full Name	interleukin 6
Background	This gene encodes a cytokine that functions in inflammation and the maturation of B cells. In addition, the encoded protein has been shown to be an endogenous pyrogen capable of inducing fever in people with autoimmune diseases or infections. The protein is primarily produced at sites of acute and chronic inflammation, where it is secreted into the serum and induces a transcriptional inflammatory response through interleukin 6 receptor, alpha. The functioning of this gene is implicated in a wide variety of inflammation-associated disease states, including susceptibility to diabetes mellitus and systemic juvenile rheumatoid arthritis. [provided by RefSeq, Jun 2011]
Function	Cytokine with a wide variety of biological functions. It is a potent inducer of the acute phase response. Plays an essential role in the final differentiation of B-cells into Ig-secreting cells Involved in lymphocyte and monocyte differentiation. Acts on B-cells, T-cells, hepatocytes, hematopoietic progenitor cells and cells of the CNS. Required for the generation of T(H)17 cells. Also acts as a myokine. It is discharged into the bloodstream after muscle contraction and acts to increase the breakdown of fats and to improve insulin resistance. It induces myeloma and plasmacytoma growth and induces nerve cells differentiation. [UniProt]
Highlight	Related products: <a href="#">IL6 antibodies</a> ; <a href="#">IL6 ELISA Kits</a> ; <a href="#">IL6 recombinant proteins</a> ; <a href="#">Anti-Mouse IgG secondary antibodies</a> ; Related news: <a href="#">HMGB1 in inflammation</a> <a href="#">Inflammatory Cytokines</a>
Calculated Mw	24 kDa
PTM	N- and O-glycosylated.



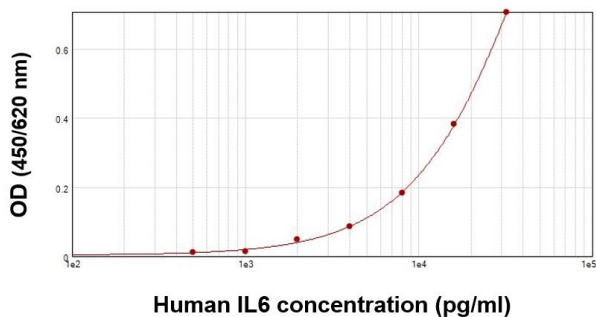
ARG56591 anti-IL6 antibody [1.2-2B11-2G10] IHC-P image

Immunohistochemistry: Formalin-fixed and paraffin-embedded sections of Human cervical squamous cell carcinoma. The recommended ARG56591 anti-IL6 antibody [1.2-2B11-2G10] concentration is 0.125  $\mu\text{g/ml}$  with an overnight incubation at 4°C. An HRP-labeled polymer detection system was used with a DAB chromogen. Antigen Retrieval: Boil tissue section in Sodium Citrate buffer (pH 6.0) followed by cooling at RT for 20 min.



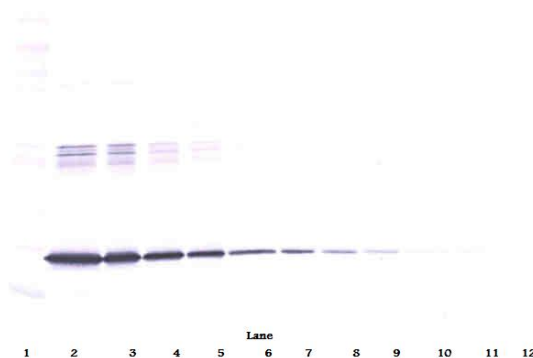
ARG56591 anti-IL6 antibody [1.2-2B11-2G10] WB image

Western blot: 250 - 0.24 ng (left to right) of Human IL-6 stained with ARG56591 anti-IL6 antibody [1.2-2B11-2G10], under reducing conditions.



ARG56591 anti-IL6 antibody [1.2-2B11-2G10] standard curve image

Sandwich ELISA: ARG56591 anti-IL6 antibody [1.2-2B11-2G10] as a capture antibody at 1 - 2  $\mu\text{g/ml}$  dilution combined with [ARG56736](#) anti-IL6 antibody (Biotin) as a detection antibody at 0.1 - 0.2  $\mu\text{g/ml}$  dilution. Results of a typical standard run with optical density.



ARG56591 anti-IL6 antibody [1.2-2B11-2G10] WB image

Western blot: 250 - 0.24 ng (left to right) of Human IL-6 stained with ARG56591 anti-IL6 antibody [1.2-2B11-2G10], under non-reducing conditions.