

ARG56617 anti-CCL2 / MCP1 antibody

Package: 50 µg
Store at: -20°C

Summary

Product Description	Rabbit Polyclonal antibody recognizes CCL2 / MCP1
Tested Reactivity	Hu, Ms
Tested Application	ELISA, IHC-P, WB
Host	Rabbit
Clonality	Polyclonal
Isotype	IgG
Target Name	CCL2 / MCP1
Species	Human
Immunogen	E.coli derived Recombinant Human CCL2 / MCP1. (QPDAINAPVT CCYNFTNRKI SVQRLASYRR ITSSKCPKEA VIFKTIVAKE ICADPKQKWV QDSMDHLDKQ TQTPKT)
Conjugation	Un-conjugated
Alternate Names	MCP1; Monocyte chemotactic and activating factor; MCAF; Monocyte chemotactic protein 1; Monocyte secretory protein JE; HSMCR30; Small-inducible cytokine A2; HC11; SMC-CF; GDCF-2; SCYA2; C-C motif chemokine 2; Monocyte chemoattractant protein 1; MCP-1

Application Instructions

Application table	Application	Dilution
	ELISA	Sandwich: 0.5 - 2.0 µg/ml with (MCAF) as a detection antibody
	IHC-P	2.5 µg/ml
	WB	0.1 - 0.2 µg/ml
Application Note	* The dilutions indicate recommended starting dilutions and the optimal dilutions or concentrations should be determined by the scientist.	

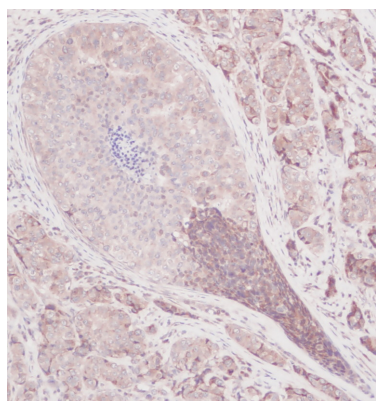
Properties

Form	Liquid
Purification	Affinity purification with immunogen.
Buffer	PBS (pH 7.2)
Concentration	1 mg/ml
Storage instruction	For continuous use, store undiluted antibody at 2-8°C for up to a week. For long-term storage, aliquot and store at -20°C or below. Storage in frost free freezers is not recommended. Avoid repeated freeze/thaw cycles. Suggest spin the vial prior to opening. The antibody solution should be gently mixed before use.
Note	For laboratory research only, not for drug, diagnostic or other use.

Bioinformation

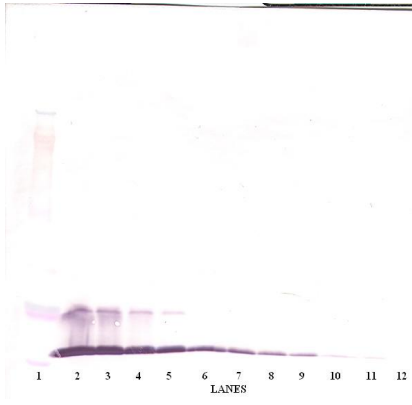
Database links	GeneID: 20296 Mouse GeneID: 6347 Human Swiss-port # P10148 Mouse Swiss-port # P13500 Human
Gene Symbol	CCL2
Gene Full Name	chemokine (C-C motif) ligand 2
Background	This gene is one of several cytokine genes clustered on the q-arm of chromosome 17. Chemokines are a superfamily of secreted proteins involved in immunoregulatory and inflammatory processes. The superfamily is divided into four subfamilies based on the arrangement of N-terminal cysteine residues of the mature peptide. This chemokine is a member of the CC subfamily which is characterized by two adjacent cysteine residues. This cytokine displays chemotactic activity for monocytes and basophils but not for neutrophils or eosinophils. It has been implicated in the pathogenesis of diseases characterized by monocytic infiltrates, like psoriasis, rheumatoid arthritis and atherosclerosis. It binds to chemokine receptors CCR2 and CCR4. [provided by RefSeq, Jul 2013]
Function	Chemotactic factor that attracts monocytes and basophils but not neutrophils or eosinophils. Augments monocyte anti-tumor activity. Has been implicated in the pathogenesis of diseases characterized by monocytic infiltrates, like psoriasis, rheumatoid arthritis or atherosclerosis. May be involved in the recruitment of monocytes into the arterial wall during the disease process of atherosclerosis. [UniProt]
Highlight	Related products: MCP1 antibodies ; MCP1 ELISA Kits ; MCP1 Duos / Panels ; Anti-Rabbit IgG secondary antibodies ; Related news: HMGB1 in inflammation Inflammatory Cytokines
Calculated Mw	11 kDa (Human); 16 kDa (Mouse)
PTM	Processing at the N-terminus can regulate receptor and target cell selectivity. Deletion of the N-terminal residue converts it from an activator of basophil to an eosinophil chemoattractant.

Images



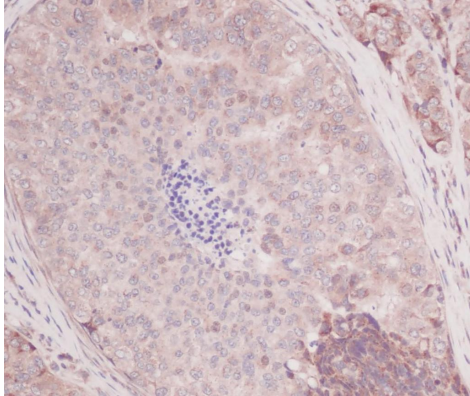
ARG56617 anti-CCL2 / MCP1 antibody IHC-P image

Immunohistochemistry: Formalin-fixed and paraffin-embedded sections of Human breast invasive ductal carcinoma. The recommended ARG56617 anti-CCL2 / MCP1 antibody concentration is 2.5 µg/ml and a two-hour incubation at RT. An HRP-labeled polymer detection system was used with a DAB chromogen. Antigen Retrieval: Boil tissue section in Sodium Citrate buffer (pH 6.0) followed by cooling at RT for 20 min.



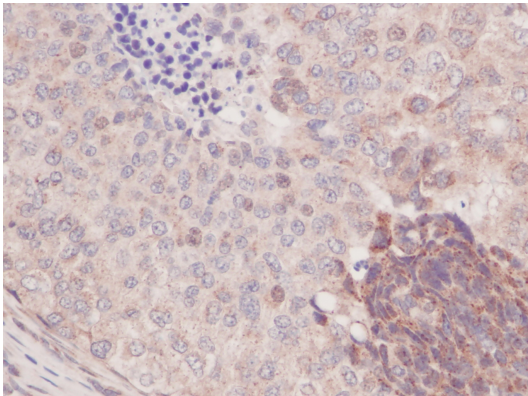
ARG56617 anti-CCL2 / MCP1 antibody WB image

Western blot: 250 - 0.24 ng of Human MCP-1(MCAF) stained with ARG56617 anti-CCL2 / MCP1 antibody, under reducing conditions.



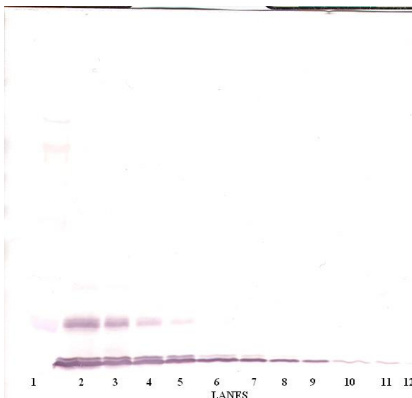
ARG56617 anti-CCL2 / MCP1 antibody IHC-P image

Immunohistochemistry: Formalin-fixed and paraffin-embedded sections of Human breast invasive ductal carcinoma. The recommended ARG56617 anti-CCL2 / MCP1 antibody concentration is 2.5 µg/ml and a two-hour incubation at RT. An HRP-labeled polymer detection system was used with a DAB chromogen. Antigen Retrieval: Boil tissue section in Sodium Citrate buffer (pH 6.0) followed by cooling at RT for 20 min.



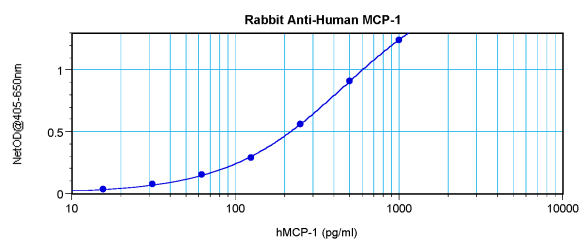
ARG56617 anti-CCL2 / MCP1 antibody IHC-P image

Immunohistochemistry: Formalin-fixed and paraffin-embedded sections of Human breast invasive ductal carcinoma. The recommended ARG56617 anti-CCL2 / MCP1 antibody concentration is 2.5 µg/ml and a two-hour incubation at RT. An HRP-labeled polymer detection system was used with a DAB chromogen. Antigen Retrieval: Boil tissue section in Sodium Citrate buffer (pH 6.0) followed by cooling at RT for 20 min.



ARG56617 anti-CCL2 / MCP1 antibody WB image

Western blot: 250 - 0.24 ng of Human MCP-1(MCAF) stained with ARG56617 anti-CCL2 / MCP1 antibody, under non-reducing conditions.



ARG56617 anti-CCL2 / MCP1 antibody standard curve image

Sandwich ELISA: ARG56617 anti-CCL2 / MCP1 antibody as a capture antibody at 0.5 - 2.0 µg/ml combined with ARG56731 anti-CCL2 / MCP1 antibody (Biotin) as a detection antibody. Results of a typical standard run with optical density.