

ARG56620 anti-RELM beta antibody

Package: 50 µg
Store at: -20°C

Summary

Product Description	Rabbit Polyclonal antibody recognizes RELM beta
Tested Reactivity	Hu
Tested Application	ELISA, IHC-P, WB
Host	Rabbit
Clonality	Polyclonal
Isotype	IgG
Target Name	RELM beta
Species	Human
Immunogen	E.coli derived Recombinant Human RELMβ. (MQCSLDSVMD KIKDVLNSL EYSPISKK LSCASVKSQG RPSSCPAGMA VTGCACGYGC GSWDVQLETT CHCQCSVVDW TTARCCHLT)
Conjugation	Un-conjugated
Alternate Names	Cysteine-rich secreted protein FIZZ2; XCP2; FIZZ2; RELM-beta; Cysteine-rich secreted protein A12-alpha-like 1; RELMb; RELMbeta; Colon carcinoma-related gene protein; Resistin-like beta; HXCP2; Colon and small intestine-specific cysteine-rich protein; FIZZ1

Application Instructions

Application table	Application	Dilution
	ELISA	Sandwich: 0.5 - 2.0 µg/ml with ARG56734 as a detection antibody
	IHC-P	1.0 µg/ml
	WB	0.1 - 0.2 µg/ml
Application Note	* The dilutions indicate recommended starting dilutions and the optimal dilutions or concentrations should be determined by the scientist.	

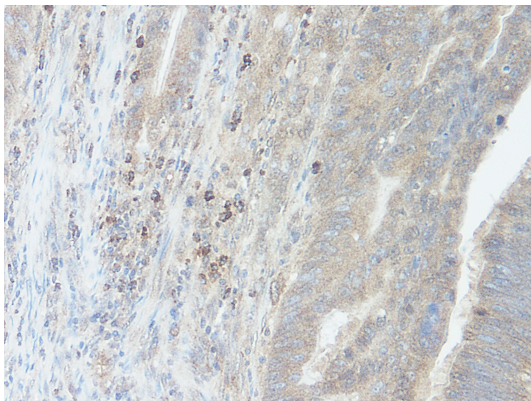
Properties

Form	Liquid
Purification	Affinity purification with immunogen.
Buffer	PBS (pH 7.2)
Concentration	1 mg/ml
Storage instruction	For continuous use, store undiluted antibody at 2-8°C for up to a week. For long-term storage, aliquot and store at -20°C or below. Storage in frost free freezers is not recommended. Avoid repeated freeze/thaw cycles. Suggest spin the vial prior to opening. The antibody solution should be gently mixed before use.
Note	For laboratory research only, not for drug, diagnostic or other use.

Bioinformation

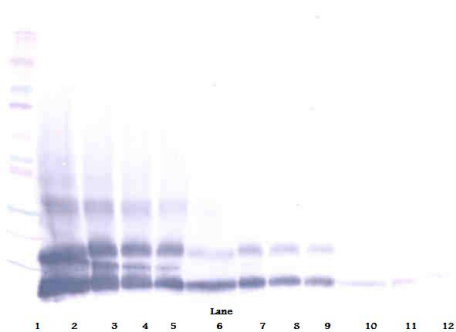
Database links	GeneID: 84666 Human Swiss-port # Q9BQ08 Human
Gene Symbol	RETNLB
Gene Full Name	resistin like beta
Function	Probable hormone. [UniProt]
Calculated Mw	12 kDa

Images



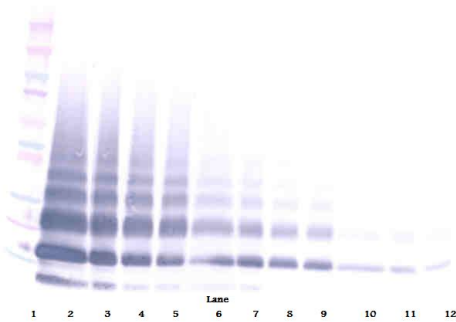
ARG56620 anti-RELM beta antibody IHC-P image

Immunohistochemistry: Formalin-fixed and paraffin-embedded sections of Human colon/rectum adenocarcinoma. The recommended ARG56620 anti-RELM beta antibody concentration is 1.0 µg/ml with an overnight incubation at 4°C. An HRP-labeled polymer detection system was used with a DAB chromogen.



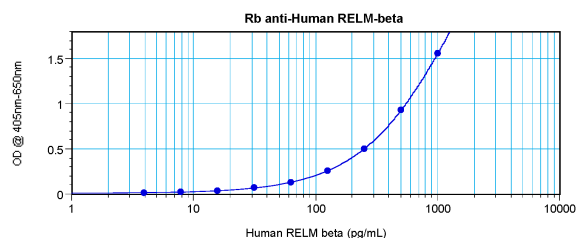
ARG56620 anti-RELM beta antibody WB image

Western blot: 250 - 0.24 ng of Human RELMβ stained with ARG56620 anti-RELM beta antibody, under reducing conditions.



ARG56620 anti-RELM beta antibody WB image

Western blot: 250 - 0.24 ng of Human RELMβ stained with ARG56620 anti-RELM beta antibody, under non-reducing conditions.



ARG56620 anti-RELM beta antibody standard curve image

Sandwich ELISA: ARG56620 anti-RELM beta antibody as a capture antibody at 0.5 - 2.0 µg/ml combined with ARG56734 anti-RELM beta antibody (Biotin) as a detection antibody. Results of a typical standard run with optical density.