

## ARG56643 anti-IL15 antibody

Package: 50 µg  
Store at: -20°C

### Summary

Product Description	Rabbit Polyclonal antibody recognizes IL15
Tested Reactivity	Hu
Tested Application	ELISA, IHC-P, Neut, WB
Host	Rabbit
Clonality	Polyclonal
Isotype	IgG
Target Name	IL15
Species	Human
Immunogen	E.coli derived Recombinant Human IL-15. (MNWVNISDL KKIEDLIQSM HIDATLYTES DVHPSCKVTA MKCFLELQV ISLESGDASI HDTVENLIIL ANNSLSSNGN VTESGCKECE ELEEKNIKEF LQSFVHIVQM FINTS)
Conjugation	Un-conjugated
Alternate Names	IL-15; Interleukin-15

### Application Instructions

Application table	Application	Dilution
	ELISA	Sandwich: 0.5 - 2.0 µg/ml with ARG56753 as a detection antibody
	IHC-P	0.5 µg/ml - 1.0 µg/ml
	Neut	0.15 - 0.20 µg/ml (To yield [ND50] of the biological activity of hIL - 15 (1.0 ng/ml) )
	WB	0.1 - 0.2 µg/ml
Application Note	* The dilutions indicate recommended starting dilutions and the optimal dilutions or concentrations should be determined by the scientist.	

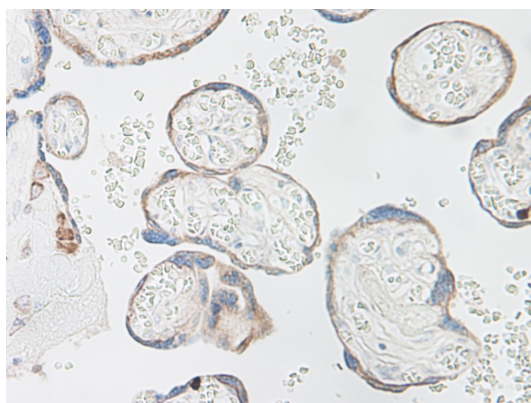
### Properties

Form	Liquid
Purification	Affinity purification with immunogen.
Buffer	PBS (pH 7.2)
Concentration	1 mg/ml
Storage instruction	For continuous use, store undiluted antibody at 2-8°C for up to a week. For long-term storage, aliquot and store at -20°C or below. Storage in frost free freezers is not recommended. Avoid repeated freeze/thaw cycles. Suggest spin the vial prior to opening. The antibody solution should be gently mixed before use.

## Bioinformation

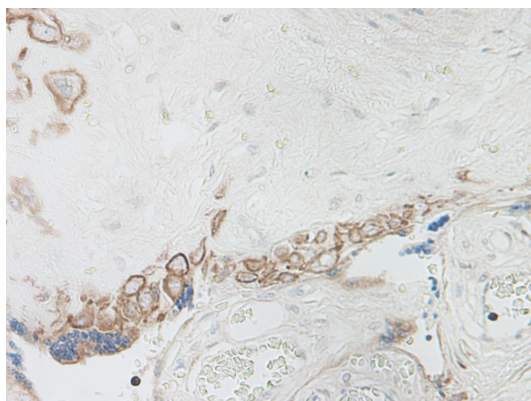
Database links	<a href="#">GeneID: 3600 Human</a> <a href="#">Swiss-port # P40933 Human</a>
Gene Symbol	IL15
Gene Full Name	interleukin 15
Background	The protein encoded by this gene is a cytokine that regulates T and natural killer cell activation and proliferation. This cytokine and interleukine 2 share many biological activities. They are found to bind common hematopoietin receptor subunits, and may compete for the same receptor, and thus negatively regulate each other's activity. The number of CD8+ memory cells is shown to be controlled by a balance between this cytokine and IL2. This cytokine induces the activation of JAK kinases, as well as the phosphorylation and activation of transcription activators STAT3, STAT5, and STAT6. Studies of the mouse counterpart suggested that this cytokine may increase the expression of apoptosis inhibitor BCL2L1/BCL-x(L), possibly through the transcription activation activity of STAT6, and thus prevent apoptosis. Alternatively spliced transcript variants of this gene have been reported. [provided by RefSeq, Feb 2011]
Function	Cytokine that stimulates the proliferation of T-lymphocytes. Stimulation by IL-15 requires interaction of IL-15 with components of IL-2R, including IL-2R beta and probably IL-2R gamma but not IL-2R alpha. [UniProt]
Calculated Mw	18 kDa

## Images



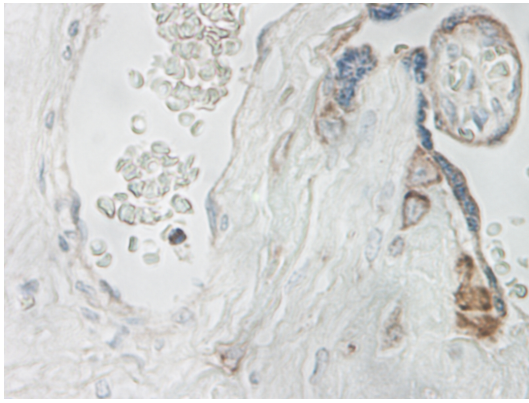
ARG56643 anti-IL15 antibody IHC-P image

Immunohistochemistry: Formalin-fixed and paraffin-embedded sections of Human normal placenta. The recommended ARG56643 anti-IL15 antibody concentration is 0.5 µg/ml-1.0 µg/ml with a two hour incubation at RT. An HRP-labeled polymer detection system was used with a DAB chromogen. Antigen Retrieval: Boil tissue section in Sodium Citrate buffer (pH 6.0) followed by cooling at RT for 20 min.



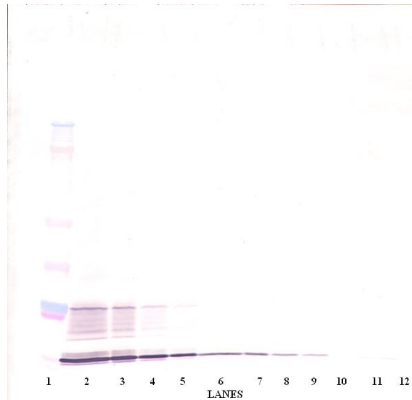
ARG56643 anti-IL15 antibody IHC-P image

Immunohistochemistry: Formalin-fixed and paraffin-embedded sections of Human normal placenta. The recommended ARG56643 anti-IL15 antibody concentration is 0.5 µg/ml-1.0 µg/ml with a two hour incubation at RT. An HRP-labeled polymer detection system was used with a DAB chromogen. Antigen Retrieval: Boil tissue section in Sodium Citrate buffer (pH 6.0) followed by cooling at RT for 20 min.



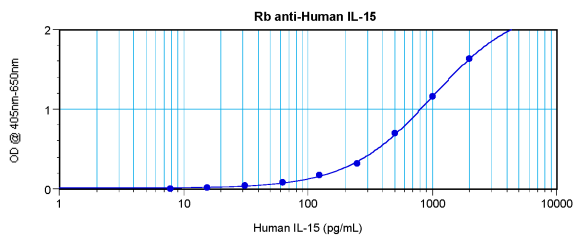
ARG56643 anti-IL15 antibody IHC-P image

Immunohistochemistry: Formalin-fixed and paraffin-embedded sections of Human normal placenta. The recommended ARG56643 anti-IL15 antibody concentration is 0.5 µg/ml-1.0 µg/ml with a two hour incubation at RT. An HRP-labeled polymer detection system was used with a DAB chromogen. Antigen Retrieval: Boil tissue section in Sodium Citrate buffer (pH 6.0) followed by cooling at RT for 20 min.



ARG56643 anti-IL15 antibody WB image

Western blot: 250 - 0.24 ng of Human IL-15 stained with ARG56643 anti-IL15 antibody, under non-reducing conditions.



ARG56643 anti-IL15 antibody standard curve image

Sandwich ELISA: ARG56643 anti-IL15 antibody as a capture antibody at 0.5 - 2.0 µg/ml combined with ARG56753 anti-IL-15 antibody (Biotin) as a detection antibody. Results of a typical standard run with optical density.