

ARG56649 anti-CCL3 / MIP1 alpha antibody

Package: 50 µg
Store at: -20°C

Summary

Product Description	Rabbit Polyclonal antibody recognizes CCL3 / MIP1 alpha
Tested Reactivity	Ms, Rat
Tested Application	ELISA, WB
Host	Rabbit
Clonality	Polyclonal
Isotype	IgG
Target Name	CCL3 / MIP1 alpha
Species	Mouse
Immunogen	E.coli derived Recombinant Mouse MIP-1α (CCL3). (APYGADTPTA CCFSYSRKIP RQFIVDYFET SSLCSQPGVI FLTNRNRQIC ADSKETWVQE YITDLELNA)
Conjugation	Un-conjugated
Alternate Names	MIP-1-alpha; SIS-beta; PAT 464.1; Tonsillar lymphocyte LD78 alpha protein; G0/G1 switch regulatory protein 19-1; Small-inducible cytokine A3; C-C motif chemokine 3; LD78-alpha; 4-69; Macrophage inflammatory protein 1-alpha; MIP1A; SCYA3; GOS19-1; LD78ALPHA

Application Instructions

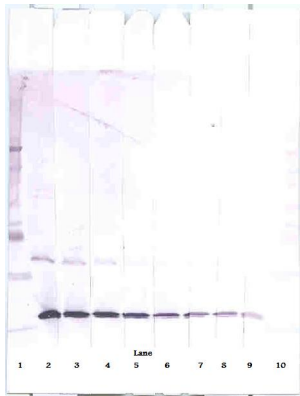
Application table	Application	Dilution
	ELISA	Sandwich: 0.5 - 2.0 µg/ml with ARG56760 as a detection antibody
	WB	0.1 - 0.2 µg/ml
Application Note	* The dilutions indicate recommended starting dilutions and the optimal dilutions or concentrations should be determined by the scientist.	

Properties

Form	Liquid
Purification	Affinity purification with immunogen.
Buffer	PBS (pH 7.2)
Concentration	1 mg/ml
Storage instruction	For continuous use, store undiluted antibody at 2-8°C for up to a week. For long-term storage, aliquot and store at -20°C or below. Storage in frost free freezers is not recommended. Avoid repeated freeze/thaw cycles. Suggest spin the vial prior to opening. The antibody solution should be gently mixed before use.
Note	For laboratory research only, not for drug, diagnostic or other use.

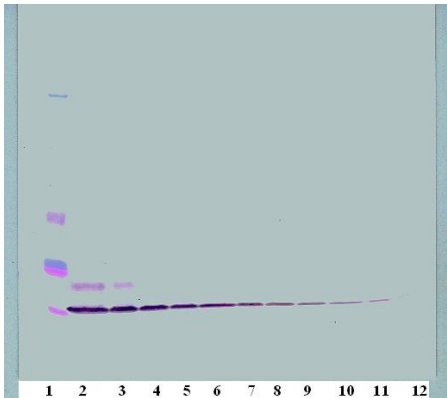
Database links	GeneID: 20302 Mouse GeneID: 25542 Rat Swiss-port # P10855 Mouse Swiss-port # P50229 Rat
Gene Symbol	Ccl3
Gene Full Name	chemokine (C-C motif) ligand 3
Background	This locus represents a small inducible cytokine. The encoded protein, also known as macrophage inflammatory protein 1 alpha, plays a role in inflammatory responses through binding to the receptors CCR1, CCR4 and CCR5. Polymorphisms at this locus may be associated with both resistance and susceptibility to infection by human immunodeficiency virus type 1.[provided by RefSeq, Sep 2010]
Function	Monokine with inflammatory and chemokinetic properties. Binds to CCR1, CCR4 and CCR5. One of the major HIV-suppressive factors produced by CD8+ T-cells. Recombinant MIP-1-alpha induces a dose-dependent inhibition of different strains of HIV-1, HIV-2, and simian immunodeficiency virus (SIV). [UniProt]
Calculated Mw	10 kDa
PTM	N-terminal processed form LD78-alpha(4-69) is produced by proteolytic cleavage after secretion from HTLV1-transformed T-cells.

Images



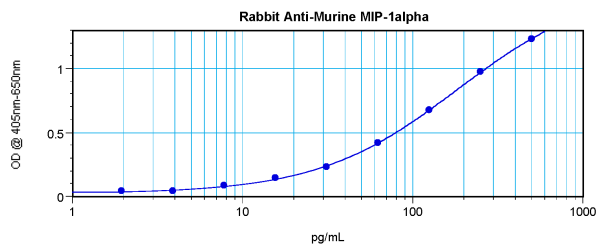
ARG56649 anti-CCL3 / MIP1 alpha antibody WB image

Western blot: 250 - 0.24 ng of Mouse MIP-1α stained with ARG56649 anti-CCL3 / MIP1 alpha antibody, under reducing conditions.



ARG56649 anti-CCL3 / MIP1 alpha antibody WB image

Western blot: 250 - 0.24 ng of Mouse MIP-1α stained with ARG56649 anti-CCL3 / MIP1 alpha antibody, under non-reducing conditions.



ARG56649 anti-CCL3 / MIP1 alpha antibody standard curve image

Sandwich ELISA: ARG56649 anti-CCL3 / MIP1 alpha antibody as a capture antibody at 0.5 - 2.0 $\mu\text{g/ml}$ combined with ARG56760 anti-MIP1 alpha / CCL3 antibody (Biotin) as a detection antibody. Results of a typical standard run with optical density.