

ARG56659 anti-IL2 antibody

Package: 50 µg
Store at: -20°C

Summary

Product Description	Rabbit Polyclonal antibody recognizes IL2
Tested Reactivity	Rat
Tested Application	ELISA, Neut, WB
Host	Rabbit
Clonality	Polyclonal
Isotype	IgG
Target Name	IL2
Species	Rat
Immunogen	E.coli derived Recombinant Rat IL-2. (MAPTSSPAKE TQQHLEQLLL DLQVLLRGID NYKNLKLPMML LTFKFYLPKQ ATELKHLQCL ENELGALQRV LDLTQSKSFH LEDAGNFISN IRVTVVKLKG SENKFECQFD DEPATVVEFL RRWIAIAQSI ISTM)
Conjugation	Un-conjugated
Alternate Names	TCGF; IL-2; lymphokine; Interleukin-2; Aldesleukin; T-cell growth factor

Application Instructions

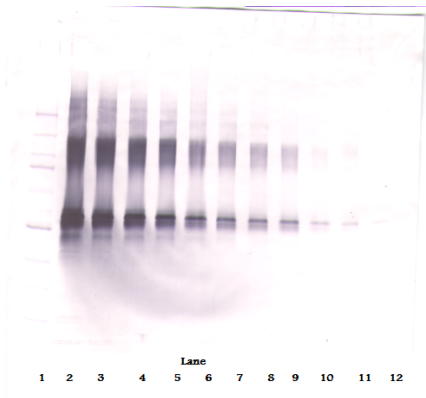
Application table	Application	Dilution
	ELISA	Sandwich: 0.5 - 2.0 µg/ml with ARG56769 as a detection antibody
	Neut	< 0.1 µg/ml (To yield [ND50] of the biological activity of Rat IL - 2 (1.0 ng/ml))
	WB	0.1 - 0.2 µg/ml
Application Note	* The dilutions indicate recommended starting dilutions and the optimal dilutions or concentrations should be determined by the scientist.	

Properties

Form	Liquid
Purification	Affinity purification with immunogen.
Buffer	PBS (pH 7.2)
Concentration	1 mg/ml
Storage instruction	For continuous use, store undiluted antibody at 2-8°C for up to a week. For long-term storage, aliquot and store at -20°C or below. Storage in frost free freezers is not recommended. Avoid repeated freeze/thaw cycles. Suggest spin the vial prior to opening. The antibody solution should be gently mixed before use.
Note	For laboratory research only, not for drug, diagnostic or other use.

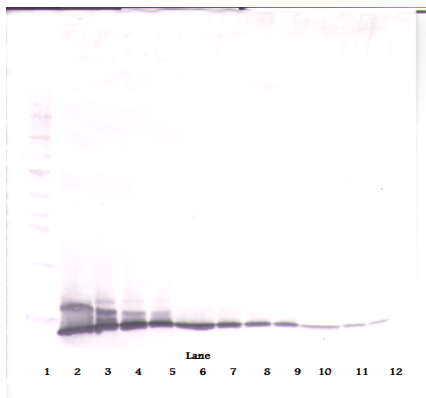
Database links	GeneID: 116562 Rat Swiss-port # P17108 Rat
Gene Symbol	IL2
Gene Full Name	interleukin 2
Background	The protein encoded by this gene is a secreted cytokine that is important for the proliferation of T and B lymphocytes. The receptor of this cytokine is a heterotrimeric protein complex whose gamma chain is also shared by interleukin 4 (IL4) and interleukin 7 (IL7). The expression of this gene in mature thymocytes is monoallelic, which represents an unusual regulatory mode for controlling the precise expression of a single gene. The targeted disruption of a similar gene in mice leads to ulcerative colitis-like disease, which suggests an essential role of this gene in the immune response to antigenic stimuli. [provided by RefSeq, Jul 2008]
Function	Produced by T-cells in response to antigenic or mitogenic stimulation, this protein is required for T-cell proliferation and other activities crucial to regulation of the immune response. Can stimulate B-cells, monocytes, lymphokine-activated killer cells, natural killer cells, and glioma cells. [UniProt]
Calculated Mw	18 kDa

Images



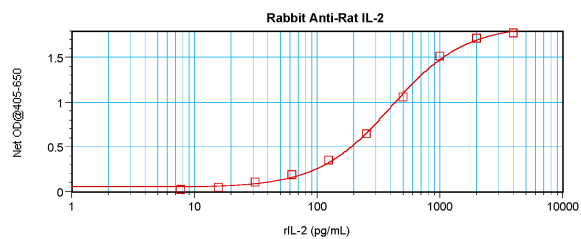
ARG56659 anti-IL2 antibody WB image

Western blot: 250 - 0.24 ng of Rat IL-2 stained with ARG56659 anti-IL2 antibody, under reducing conditions.



ARG56659 anti-IL2 antibody WB image

Western blot: 250 - 0.24 ng of Rat IL-2 stained with ARG56659 anti-IL2 antibody, under non-reducing conditions.



ARG56659 anti-IL2 antibody standard curve image

Sandwich ELISA: ARG56659 anti-IL2 antibody as a capture antibody at 0.5 - 2.0 µg/ml combined with ARG56769 anti-IL2 antibody (Biotin) as a detection antibody. Results of a typical standard run with optical density.