

ARG56662 anti-Galectin 1 antibody

Package: 50 µg
Store at: -20°C

Summary

Product Description	Rabbit Polyclonal antibody recognizes Galectin 1
Tested Reactivity	Hu, Chk, Hm
Tested Application	ELISA, WB
Host	Rabbit
Clonality	Polyclonal
Isotype	IgG
Target Name	Galectin 1
Species	Human
Immunogen	E.coli derived Recombinant Human Galectin 1. (ACGLVASNLN LKPGCELRVR GEVAPDAKSF VLNLGKDSNN LCLHFNPRFN AHGDANTIVC NSKDGGAWGT EQREAVFPFQ PGSVAEVCIT FDQANLTVKL PDGYEFKFPN RLNLEAINYM AADGDFKIKC VAFD)
Conjugation	Un-conjugated
Alternate Names	HBL; Gal-1; GAL1; HPL; Lectin galactoside-binding soluble 1; Galectin-1; 14 kDa laminin-binding protein; Lactose-binding lectin 1; GBP; Beta-galactoside-binding lectin L-14-I; Putative MAPK-activating protein PM12; 14 kDa lectin; Galaptin; S-Lac lectin 1; HLBP14

Application Instructions

Application table	Application	Dilution
	ELISA	Sandwich: 0.5 - 2.0 µg/ml with ARG56772 as a detection antibody
	WB	0.1 - 0.2 µg/ml
Application Note	* The dilutions indicate recommended starting dilutions and the optimal dilutions or concentrations should be determined by the scientist.	

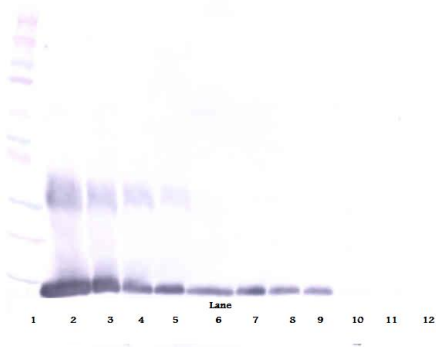
Properties

Form	Liquid
Purification	Affinity purification with immunogen.
Buffer	PBS (pH 7.2)
Concentration	1 mg/ml
Storage instruction	For continuous use, store undiluted antibody at 2-8°C for up to a week. For long-term storage, aliquot and store at -20°C or below. Storage in frost free freezers is not recommended. Avoid repeated freeze/thaw cycles. Suggest spin the vial prior to opening. The antibody solution should be gently mixed before use.
Note	For laboratory research only, not for drug, diagnostic or other use.

Bioinformation

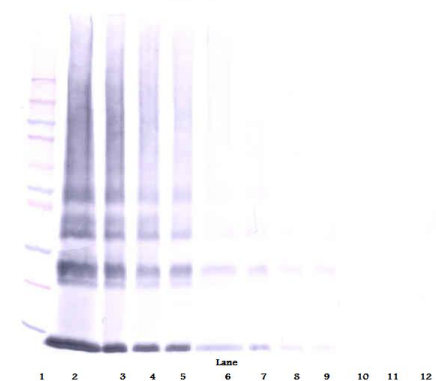
Gene Symbol	LGALS1
Gene Full Name	lectin, galactoside-binding, soluble, 1
Background	The galectins are a family of beta-galactoside-binding proteins implicated in modulating cell-cell and cell-matrix interactions. This gene product may act as an autocrine negative growth factor that regulates cell proliferation. [provided by RefSeq, Jul 2008]
Function	May regulate apoptosis, cell proliferation and cell differentiation. Binds beta-galactoside and a wide array of complex carbohydrates. Inhibits CD45 protein phosphatase activity and therefore the dephosphorylation of Lyn kinase. Strong inducer of T-cell apoptosis. [UniProt]
Calculated Mw	15 kDa

Images



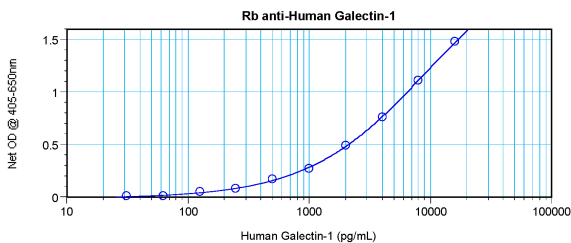
ARG56662 anti-Galectin 1 antibody WB image

Western blot: 250 - 0.24 ng of Human Galectin 1 stained with ARG56662 anti-Galectin 1 antibody, under reducing conditions.



ARG56662 anti-Galectin 1 antibody WB image

Western blot: 250 - 0.24 ng of Human Galectin 1 stained with ARG56662 anti-Galectin 1 antibody, under non-reducing conditions.



ARG56662 anti-Galectin 1 antibody standard curve image

Sandwich ELISA: ARG56662 anti-Galectin 1 antibody as a capture antibody at 0.5 - 2.0 µg/ml combined with ARG56772 anti-Galectin 1 antibody (Biotin) as a detection antibody. Results of a typical standard run with optical density.