

## ARG56678 anti-G-CSF antibody

Package: 50 µg  
Store at: -20°C

### Summary

Product Description	Rabbit Polyclonal antibody recognizes G-CSF
Tested Reactivity	Hu
Tested Application	ELISA, IHC-P, Neut, WB
Host	Rabbit
Clonality	Polyclonal
Isotype	IgG
Target Name	G-CSF
Species	Human
Immunogen	E.coli derived Recombinant Human G-CSF. (TPLGPASSLP QSFLKCLEQ VRKIQGDGAA LQEKLCATYK LCHPEELVLL GHSLGIPWAP LSSCPSQALQ LAGCLSQLHS GLFLYQGLLQ ALEGISPELG PTLDTLQLDV ADFATTIWQQ MEELGMAPAL QPTQGAMPAF ASAFQRRAGG VLVASHLQSF LEVSYRVLRLH LAQP)
Conjugation	Un-conjugated
Alternate Names	Granulocyte colony-stimulating factor; Lenograstim; C17orf33; GCSF; G-CSF; Filgrastim; Pluripoietin; CSF3OS

### Application Instructions

Application table	Application	Dilution
	ELISA	Sandwich: 0.5 - 2.0 µg/ml with ARG56788 as a detection antibody
	IHC-P	0.25 µg/ml
	Neut	0.04 - 0.06 µg/ml (To yield [ND50] of the biological activity of hG - CSF (0.5 ng/ml) )
	WB	0.1 - 0.2 µg/ml
Application Note	* The dilutions indicate recommended starting dilutions and the optimal dilutions or concentrations should be determined by the scientist.	

### Properties

Form	Liquid
Purification	Affinity purification with immunogen.
Buffer	PBS (pH 7.2)
Concentration	1 mg/ml
Storage instruction	For continuous use, store undiluted antibody at 2-8°C for up to a week. For long-term storage, aliquot and store at -20°C or below. Storage in frost free freezers is not recommended. Avoid repeated freeze/thaw cycles. Suggest spin the vial prior to opening. The antibody solution should be gently mixed

before use.

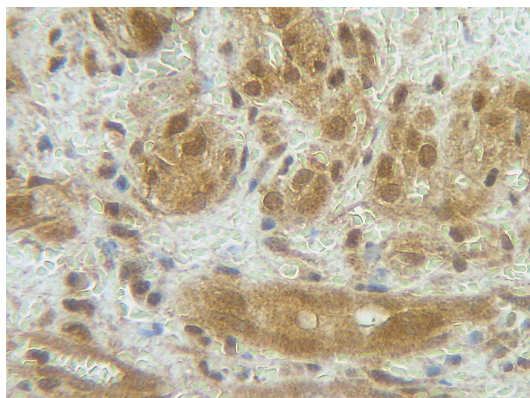
#### Note

For laboratory research only, not for drug, diagnostic or other use.

## Bioinformation

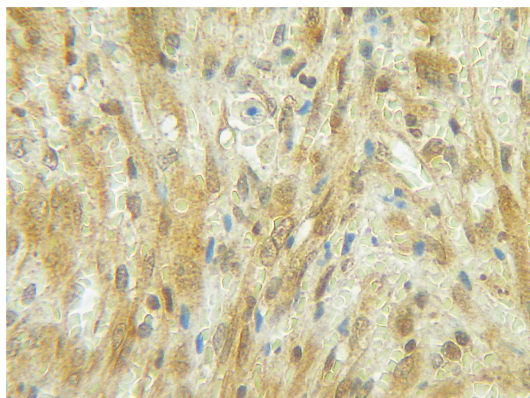
Database links	<a href="#">GeneID: 1440 Human</a> <a href="#">Swiss-port # P09919 Human</a>
Gene Symbol	CSF3
Gene Full Name	colony stimulating factor 3 (granulocyte)
Background	The protein encoded by this gene is a cytokine that controls the production, differentiation, and function of granulocytes. The active protein is found extracellularly. Alternatively spliced transcript variants have been described for this gene. [provided by RefSeq, May 2010]
Function	Granulocyte/macrophage colony-stimulating factors are cytokines that act in hematopoiesis by controlling the production, differentiation, and function of 2 related white cell populations of the blood, the granulocytes and the monocytes-macrophages. This CSF induces granulocytes. [UniProt]
Calculated Mw	22 kDa
PTM	O-glycan consists of Gal-GalNAc disaccharide which can be modified with up to two sialic acid residues (done in recombinantly expressed G-CSF from CHO cells).

## Images



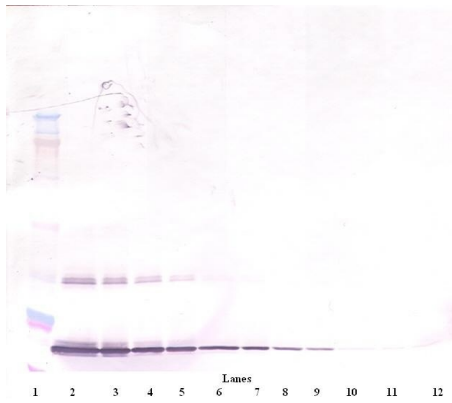
ARG56678 anti-G-CSF antibody IHC-P image

Immunohistochemistry: Formalin-fixed and paraffin-embedded sections of Human angiosarcoma. The recommended ARG56678 anti-G-CSF antibody concentration is 0.25 µg/mL with an overnight incubation at 4°C. An HRP-labeled polymer detection system was used with a DAB chromogen. Antigen Retrieval: Boil tissue section in Sodium Citrate buffer (pH 6.0) followed by cooling at RT for 20 min.



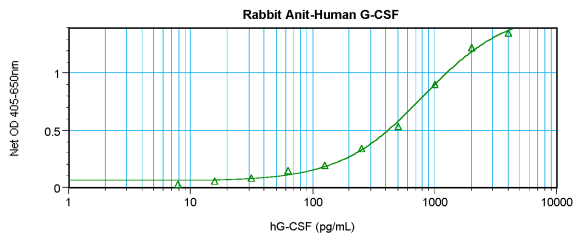
ARG56678 anti-G-CSF antibody IHC-P image

Immunohistochemistry: Formalin-fixed and paraffin-embedded sections of Human angiosarcoma. The recommended ARG56678 anti-G-CSF antibody concentration is 0.25 µg/mL with an overnight incubation at 4°C. An HRP-labeled polymer detection system was used with a DAB chromogen. Antigen Retrieval: Boil tissue section in Sodium Citrate buffer (pH 6.0) followed by cooling at RT for 20 min.



ARG56678 anti-G-CSF antibody WB image

Western blot: 250 - 0.24 ng of Human G-CSF stained with ARG56678 anti-G-CSF antibody, under non-reducing conditions.



ARG56678 anti-G-CSF antibody standard curve image

Sandwich ELISA: ARG56678 anti-G-CSF antibody as a capture antibody at 0.5 - 2.0 µg/ml combined with ARG56788 anti-G-CSF antibody (Biotin) as a detection antibody. Results of a typical standard run with optical density.