

ARG56693 anti-CXCL3 / GRO gamma antibody

Package: 50 µg
Store at: -20°C

Summary

Product Description	Rabbit Polyclonal antibody recognizes CXCL3 / GRO gamma
Tested Reactivity	Hu, Ms
Tested Application	ELISA, IHC-P, Neut, WB
Host	Rabbit
Clonality	Polyclonal
Isotype	IgG
Target Name	CXCL3 / GRO gamma
Species	Human
Immunogen	E.coli derived Recombinant Human GRO gamma. (ASVVTCLRCQ CLQTLQGIHL KNIQSVNVRS PGPHCAQTEV IATLKNGKKA CLNPASPMVQ KIEKILNKG STN)
Conjugation	Un-conjugated
Alternate Names	Macrophage inflammatory protein 2-beta; MIP2-beta; SCYB3; GRO-gamma; Growth-regulated protein gamma; 5-73; GROg; 1-73; MIP2B; C-X-C motif chemokine 3; CINC-2b; GRO3; MIP-2b

Application Instructions

Application table	Application	Dilution
	ELISA	Sandwich: 0.5 - 2.0 µg/ml with ARG56802 as a detection antibody
	IHC-P	0.5 - 0.7 µg/ml
	Neut	1.0 - 2.0 µg/ml (To yield [ND50] of the biological activity of Human GRO - γ (100 ng/ml))
	WB	0.1 - 0.2 µg/ml
Application Note	* The dilutions indicate recommended starting dilutions and the optimal dilutions or concentrations should be determined by the scientist.	

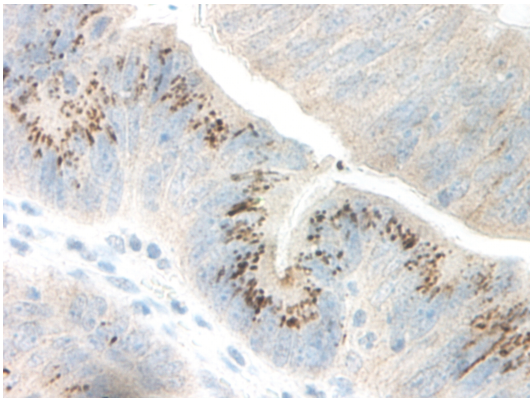
Properties

Form	Liquid
Purification	Affinity purification with immunogen.
Buffer	PBS (pH 7.2)
Concentration	1 mg/ml
Storage instruction	For continuous use, store undiluted antibody at 2-8°C for up to a week. For long-term storage, aliquot and store at -20°C or below. Storage in frost free freezers is not recommended. Avoid repeated freeze/thaw cycles. Suggest spin the vial prior to opening. The antibody solution should be gently mixed before use.

Bioinformation

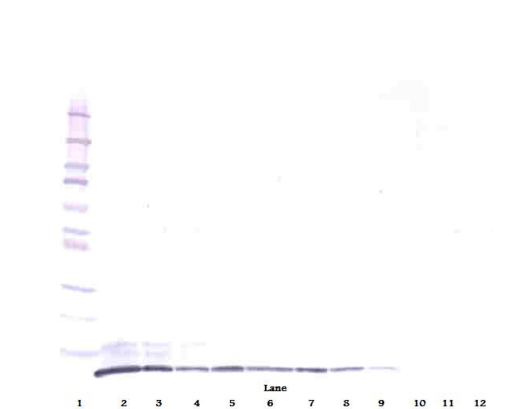
Database links	GeneID: 2921 Human GeneID: 330122 Mouse Swiss-port # P19876 Human Swiss-port # Q6W5C0 Mouse
Gene Symbol	CXCL3
Gene Full Name	chemokine (C-X-C motif) ligand 3
Background	This antimicrobial gene encodes a member of the CXC subfamily of chemokines. The encoded protein is a secreted growth factor that signals through the G-protein coupled receptor, CXC receptor 2. This protein plays a role in inflammation and as a chemoattractant for neutrophils. [provided by RefSeq, Sep 2014]
Function	Ligand for CXCR2 (By similarity). Has chemotactic activity for neutrophils. May play a role in inflammation and exert its effects on endothelial cells in an autocrine fashion. In vitro, the processed form GRO-gamma(5-73) shows a fivefold higher chemotactic activity for neutrophilic granulocytes. [UniProt]
Calculated Mw	11 kDa
PTM	N-terminal processed form GRO-gamma(5-73) is produced by proteolytic cleavage after secretion from peripheral blood monocytes.

Images



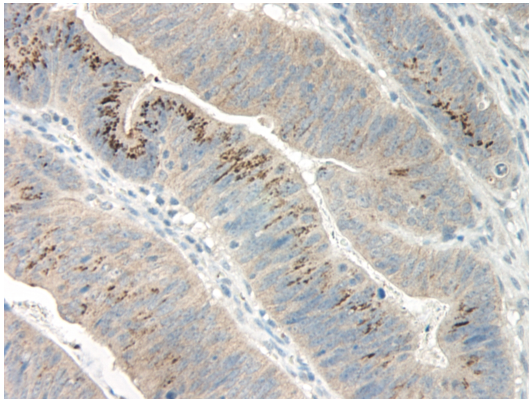
ARG56693 anti-CXCL3 / GRO gamma antibody IHC-P image

Immunohistochemistry: Formalin-fixed and paraffin-embedded sections of Human colon/rectum adenocarcinoma. The recommended ARG56693 anti-CXCL3 / GRO gamma antibody concentration is 0.7 µg/ml - 0.5 µg/ml with an overnight incubation at 4°C. An HRP-labeled polymer detection system was used with a DAB chromogen. Antigen Retrieval: Boil tissue section in Sodium Citrate buffer (pH 6.0) followed by cooling at RT for 20 min.



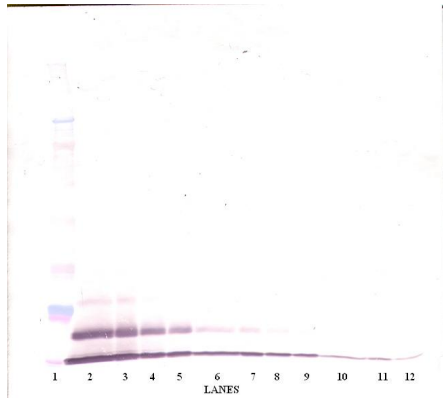
ARG56693 anti-CXCL3 / GRO gamma antibody WB image

Western blot: 250 - 0.24 ng of Human GRO gamma stained with ARG56693 anti-CXCL3 / GRO gamma antibody, under reducing conditions.



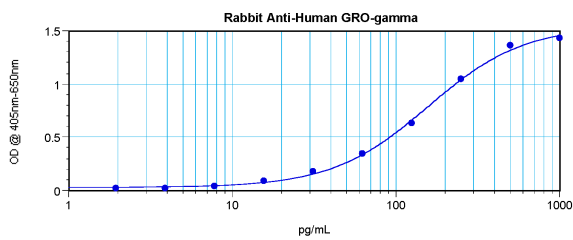
ARG56693 anti-CXCL3 / GRO gamma antibody IHC-P image

Immunohistochemistry: Formalin-fixed and paraffin-embedded sections of Human colon/rectum adenocarcinoma. The recommended ARG56693 anti-CXCL3 / GRO gamma antibody concentration is 0.7 µg/ml - 0.5 µg/ml with an overnight incubation at 4°C. An HRP-labeled polymer detection system was used with a DAB chromogen. Antigen Retrieval: Boil tissue section in Sodium Citrate buffer (pH 6.0) followed by cooling at RT for 20 min.



ARG56693 anti-CXCL3 / GRO gamma antibody WB image

Western blot: 250 - 0.24 ng of Human GRO gamma stained with ARG56693 anti-CXCL3 / GRO gamma antibody, under non-reducing conditions.



ARG56693 anti-CXCL3 / GRO gamma antibody standard curve image

Sandwich ELISA: ARG56693 anti-CXCL3 / GRO gamma antibody as a capture antibody at 0.5 - 2.0 µg/ml combined with ARG56802 anti-CXCL3 / GRO gamma antibody (Biotin) as a detection antibody. Results of a typical standard run with optical density.