

ARG56700 anti-Leptin antibody

Package: 50 µg
Store at: -20°C

Summary

Product Description	Rabbit Polyclonal antibody recognizes Leptin
Tested Reactivity	Hu, Ms
Tested Application	ELISA, IHC-P, WB
Host	Rabbit
Clonality	Polyclonal
Isotype	IgG
Target Name	Leptin
Species	Human
Immunogen	E.coli derived Recombinant Human Leptin. (MVPIQKVQDD TKTLIKTIPT RINDISHTQS VSSKQKVTGL DFIPGLHPIL TSKMDQTLA VYQQILTSMP SRNVIQISND LENLRDLLHV LAFSKSCHLP WASGLETLD LGGVLEASGY STEVVALSRL QGSLQDMLWQ LDLSPGC)
Conjugation	Un-conjugated
Alternate Names	Leptin; Obese protein; OB; LEPD; Obesity factor; OBS

Application Instructions

Application table	Application	Dilution
	ELISA	Sandwich: 0.5 - 2.0 µg/ml with ARG56810 as a detection antibody
	IHC-P	0.5 µg/ml
	WB	0.1 - 0.2 µg/ml
Application Note	* The dilutions indicate recommended starting dilutions and the optimal dilutions or concentrations should be determined by the scientist.	
Observed Size	~15 kDa	

Properties

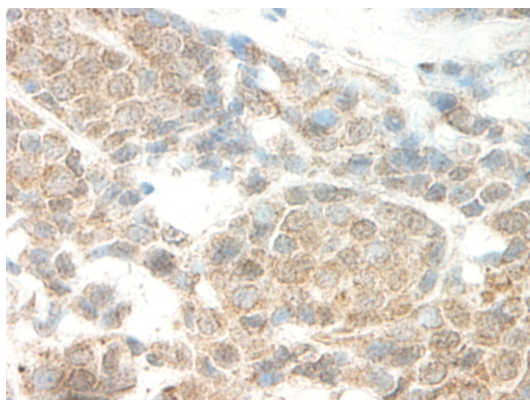
Form	Liquid
Purification	Affinity purification with immunogen.
Buffer	PBS (pH 7.2)
Concentration	1 mg/ml
Storage instruction	For continuous use, store undiluted antibody at 2-8°C for up to a week. For long-term storage, aliquot and store at -20°C or below. Storage in frost free freezers is not recommended. Avoid repeated freeze/thaw cycles. Suggest spin the vial prior to opening. The antibody solution should be gently mixed before use.

Note For laboratory research only, not for drug, diagnostic or other use.

Bioinformation

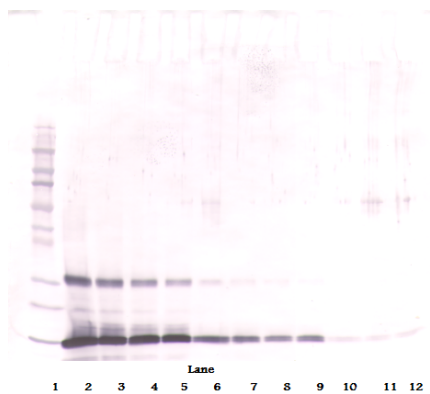
Database links	GeneID: 16846 Mouse GeneID: 3952 Human Swiss-port # P41159 Human Swiss-port # P41160 Mouse
Gene Symbol	LEP
Gene Full Name	leptin
Background	This gene encodes a protein that is secreted by white adipocytes, and which plays a major role in the regulation of body weight. This protein, which acts through the leptin receptor, functions as part of a signaling pathway that can inhibit food intake and/or regulate energy expenditure to maintain constancy of the adipose mass. This protein also has several endocrine functions, and is involved in the regulation of immune and inflammatory responses, hematopoiesis, angiogenesis and wound healing. Mutations in this gene and/or its regulatory regions cause severe obesity, and morbid obesity with hypogonadism. This gene has also been linked to type 2 diabetes mellitus development. [provided by RefSeq, Jul 2008]
Function	May function as part of a signaling pathway that acts to regulate the size of the body fat depot. An increase in the level of LEP may act directly or indirectly on the CNS to inhibit food intake and/or regulate energy expenditure as part of a homeostatic mechanism to maintain constancy of the adipose mass. [UniProt]
Highlight	Related news: Studying obesity and appetite control by quantifying orexigenic and anorexigenic hormones;
Calculated Mw	19 kDa

Images



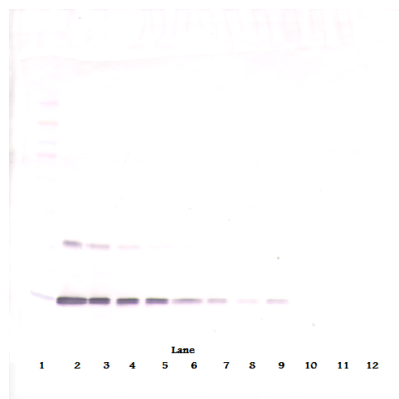
ARG56700 anti-Leptin antibody IHC-P image

Immunohistochemistry: Formalin-fixed and paraffin-embedded sections of Human breast invasive ductal carcinoma. The recommended ARG56700 anti-Leptin antibody concentration is 0.5 µg/ml with an overnight incubation at 4°C. An HRP-labeled polymer detection system was used with a DAB chromogen. Antigen Retrieval: Boil tissue section in Sodium Citrate buffer (pH 6.0) followed by cooling at RT for 20 min.



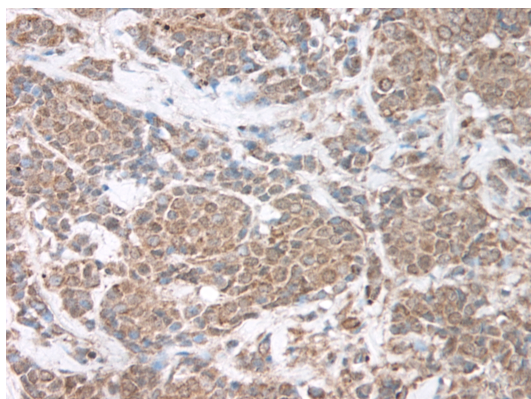
ARG56700 anti-Leptin antibody WB image

Western blot: 250 - 0.24 ng of Human Leptin stained with ARG56700 anti-Leptin antibody, under reducing conditions.



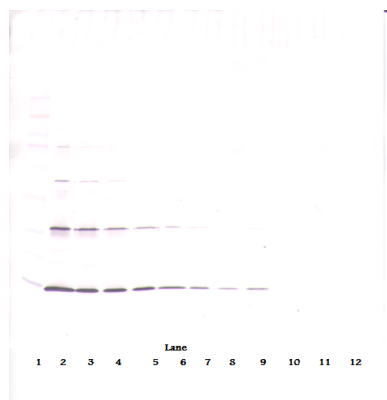
ARG56700 anti-Leptin antibody WB image

Western blot: 250 - 0.24 ng of Human Leptin stained with ARG56700 anti-Leptin antibody, under reducing conditions.



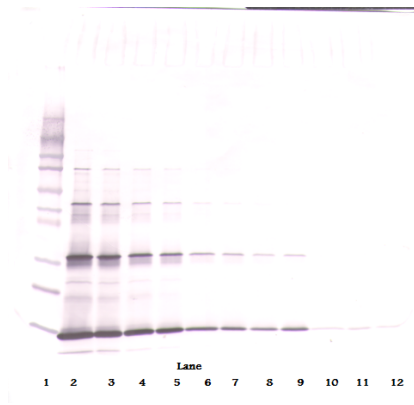
ARG56700 anti-Leptin antibody IHC-P image

Immunohistochemistry: Formalin-fixed and paraffin-embedded sections of Human breast invasive ductal carcinoma. The recommended ARG56700 anti-Leptin antibody concentration is 0.5 μ g/ml with an overnight incubation at 4°C. An HRP-labeled polymer detection system was used with a DAB chromogen. Antigen Retrieval: Boil tissue section in Sodium Citrate buffer (pH 6.0) followed by cooling at RT for 20 min.



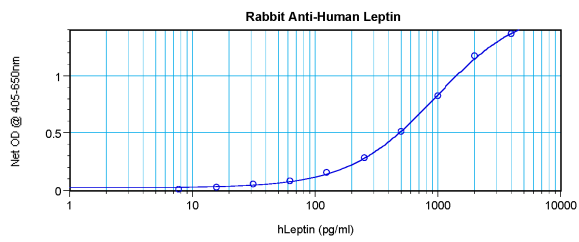
ARG56700 anti-Leptin antibody WB image

Western blot: 250 - 0.24 ng of Human Leptin stained with ARG56700 anti-Leptin antibody, under non-reducing conditions.



ARG56700 anti-Leptin antibody WB image

Western blot: 250 - 0.24 ng of Human Leptin stained with ARG56700 anti-Leptin antibody, under non-reducing conditions.



ARG56700 anti-Leptin antibody standard curve image

Sandwich ELISA: ARG56700 anti-Leptin antibody as a capture antibody at 0.5 - 2.0 µg/ml combined with ARG56810 anti-Leptin antibody (Biotin) as a detection antibody. Results of a typical standard run with optical density.