

ARG56707 anti-BD1 / beta Defensin 1 antibody

Package: 50 µg
Store at: -20°C

Summary

Product Description	Rabbit Polyclonal antibody recognizes BD1 / beta Defensin 1
Tested Reactivity	Hu
Tested Application	ELISA, IHC-P, WB
Host	Rabbit
Clonality	Polyclonal
Isotype	IgG
Target Name	BD1 / beta Defensin 1
Species	Human
Immunogen	E.coli derived Recombinant Human BD-1 (47 aa). (GNFLTGLGHR SDHYNCVSSG GQCLYSACPI FTKIQGTCYR GKAKCCK)
Conjugation	Un-conjugated
Alternate Names	DEFB-1; Defensin, beta 1; HBD1; hBD-1; BD1; Beta-defensin 1; DEFB101; BD-1

Application Instructions

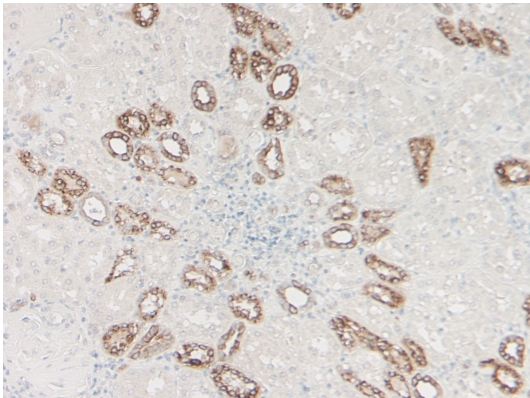
Application table	Application	Dilution
	ELISA	Sandwich: 0.5 - 2.0 µg/ml with ARG56816 as a detection antibody
	IHC-P	0.5 µg/ml
	WB	0.1 - 0.2 µg/ml
Application Note	* The dilutions indicate recommended starting dilutions and the optimal dilutions or concentrations should be determined by the scientist.	

Properties

Form	Liquid
Purification	Affinity purification with immunogen.
Buffer	PBS (pH 7.2)
Concentration	1 mg/ml
Storage instruction	For continuous use, store undiluted antibody at 2-8°C for up to a week. For long-term storage, aliquot and store at -20°C or below. Storage in frost free freezers is not recommended. Avoid repeated freeze/thaw cycles. Suggest spin the vial prior to opening. The antibody solution should be gently mixed before use.
Note	For laboratory research only, not for drug, diagnostic or other use.

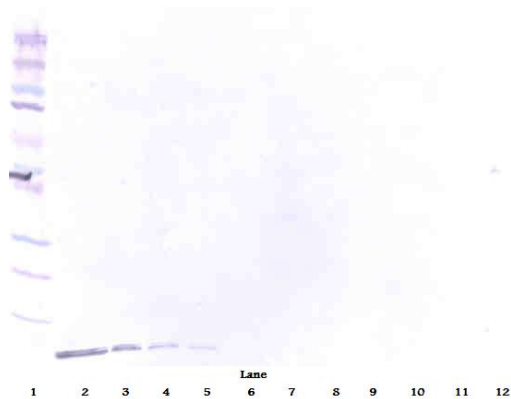
Database links	GeneID: 1672 Human Swiss-port # P60022 Human
Gene Symbol	DEFB1
Gene Full Name	defensin, beta 1
Background	Defensins form a family of microbicidal and cytotoxic peptides made by neutrophils. Members of the defensin family are highly similar in protein sequence. Beta Defensin 1 is an antimicrobial peptide implicated in the resistance of epithelial surfaces to microbial colonization. This gene maps in close proximity to defensin family member, defensin, alpha 1 and has been implicated in the pathogenesis of cystic fibrosis. [provided by RefSeq, Jul 2008]
Function	Beta Defensin 1 has bactericidal activity. May act as a ligand for C-C chemokine receptor CCR6. Positively regulates the sperm motility and bactericidal activity in a CCR6-dependent manner. Binds to CCR6 and triggers Ca2+ mobilization in the sperm which is important for its motility (PubMed:25122636). [UniProt]
Calculated Mw	7 kDa

Images



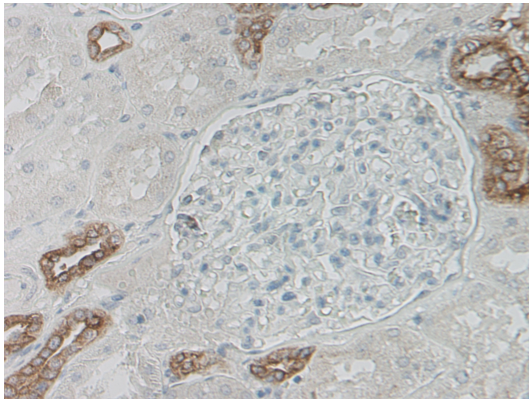
ARG56707 anti-BD1 / beta Defensin 1 antibody IHC-P image

Immunohistochemistry: Formalin-fixed and paraffin-embedded sections of normal Human kidney. The recommended ARG56707 anti-BD1 / beta Defensin 1 antibody concentration is 0.5 µg/ml with an overnight incubation at 4°C. An HRP-labeled polymer detection system was used with a DAB chromogen. Antigen Retrieval: Boil tissue section in Sodium Citrate buffer (pH 6.0) followed by cooling at RT for 20 min.



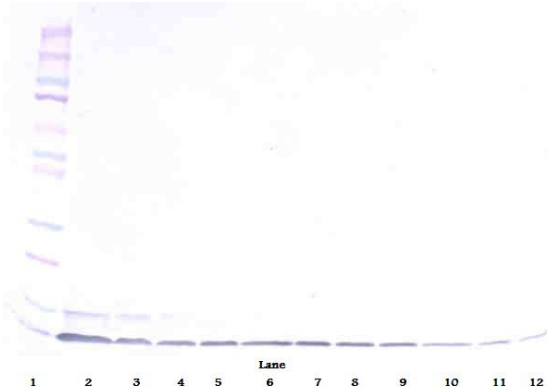
ARG56707 anti-BD1 / beta Defensin 1 antibody WB image

Western blot: 250 - 0.24 ng of Human BD-1 stained with ARG56707 anti-BD1 / beta Defensin 1 antibody, under reducing conditions.



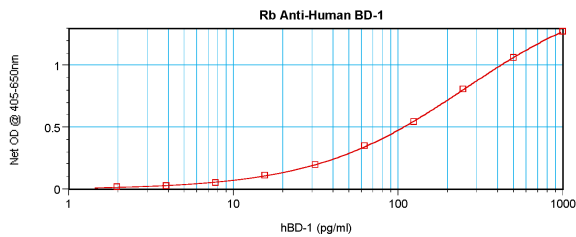
ARG56707 anti-BD1 / beta Defensin 1 antibody IHC-P image

Immunohistochemistry: Formalin-fixed and paraffin-embedded sections of normal Human kidney. The recommended ARG56707 anti-BD1 / beta Defensin 1 antibody concentration is 0.5 µg/ml with an overnight incubation at 4°C. An HRP-labeled polymer detection system was used with a DAB chromogen. Antigen Retrieval: Boil tissue section in Sodium Citrate buffer (pH 6.0) followed by cooling at RT for 20 min.



ARG56707 anti-BD1 / beta Defensin 1 antibody WB image

Western blot: 250 - 0.24 ng of Human BD-1 stained with ARG56707 anti-BD1 / beta Defensin 1 antibody, under non-reducing conditions.



ARG56707 anti-BD1 / beta Defensin 1 antibody standard curve image

Sandwich ELISA: ARG56707 anti-BD1 / beta Defensin 1 antibody as a capture antibody at 0.5 - 2.0 µg/ml combined with ARG56816 anti-BD-1 / beta Defensin-1 antibody (Biotin) as a detection antibody. Results of a typical standard run with optical density.