

ARG56725 anti-IL4 antibody (Biotin)

Package: 50 µg
Store at: 4°C

Summary

Product Description	Biotin-conjugated Rabbit Polyclonal antibody recognizes IL4
Tested Reactivity	Ms
Tested Application	ELISA, WB
Host	Rabbit
Clonality	Polyclonal
Isotype	IgG
Target Name	IL4
Species	Mouse
Immunogen	E.coli derived Recombinant Mouse IL-4. (MHIHGCDKNH LREIIGILNE VTGEGTPCTE MDVPNVLTAT KNTTESELVC RASKVLRIFY LKHGKTPCLK KNSSVLMELQ RLFRAFRCLD SSISCTMNES KSTSLKDFLE SLKSIMQMDY S)
Conjugation	Biotin
Alternate Names	BSF-1; IL-4; B-cell stimulatory factor 1; BCGF1; Lymphocyte stimulatory factor 1; BCGF-1; Interleukin-4; Pitracinra; Binetrakin; BSF1

Application Instructions

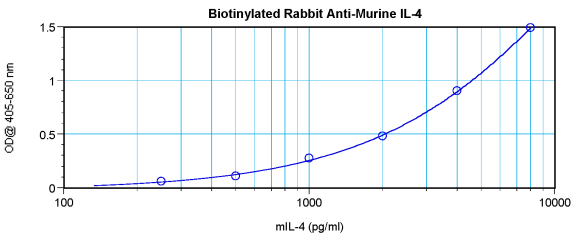
Application table	Application	Dilution
	ELISA	Direct: 0.25 - 1.0 µg/ml Sandwich: 0.25 - 1.0 µg/ml with ARG56609 as a capture antibody
	WB	0.1 - 0.2 µg/ml
Application Note	* The dilutions indicate recommended starting dilutions and the optimal dilutions or concentrations should be determined by the scientist.	

Properties

Form	Liquid
Purification	Purified by affinity chromatography.
Buffer	PBS (pH 7.2)
Concentration	1 mg/ml
Storage instruction	Aliquot and store in the dark at 2-8°C. Keep protected from prolonged exposure to light. Avoid repeated freeze/thaw cycles. Suggest spin the vial prior to opening. The antibody solution should be gently mixed before use.
Note	For laboratory research only, not for drug, diagnostic or other use.

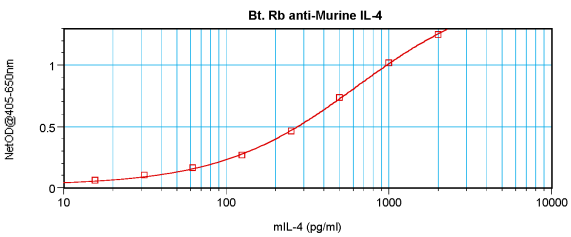
Database links	GeneID: 16189 Mouse Swiss-port # P07750 Mouse
Gene Symbol	IL4
Gene Full Name	interleukin 4
Background	The protein encoded by this gene is a pleiotropic cytokine produced by activated T cells. This cytokine is a ligand for interleukin 4 receptor. The interleukin 4 receptor also binds to IL13, which may contribute to many overlapping functions of this cytokine and IL13. STAT6, a signal transducer and activator of transcription, has been shown to play a central role in mediating the immune regulatory signal of this cytokine. This gene, IL3, IL5, IL13, and CSF2 form a cytokine gene cluster on chromosome 5q, with this gene particularly close to IL13. This gene, IL13 and IL5 are found to be regulated coordinately by several long-range regulatory elements in an over 120 kilobase range on the chromosome. Two alternatively spliced transcript variants of this gene encoding distinct isoforms have been reported. [provided by RefSeq, Jul 2008]
Function	Participates in at least several B-cell activation processes as well as of other cell types. It is a costimulator of DNA-synthesis. It induces the expression of class II MHC molecules on resting B-cells. It enhances both secretion and cell surface expression of IgE and IgG1. It also regulates the expression of the low affinity Fc receptor for IgE (CD23) on both lymphocytes and monocytes. [UniProt]
Calculated Mw	17 kDa

Images



ARG56725 anti-IL4 antibody (Biotin) standard curve image

Direct ELISA: ARG56725 anti-IL4 antibody (Biotin) at 0.25 - 1.0 µg/ml results of a typical standard run with optical density.



ARG56725 anti-IL4 antibody (Biotin) standard curve image

Sandwich ELISA: ARG56725 anti-IL4 antibody (Biotin) as a detection antibody at 0.25 - 1.0 µg/ml combined with ARG56609 anti-IL4 antibody as a capture antibody. Results of a typical standard run with optical density.