

ARG56732 anti-CCL2 / MCP1 antibody (Biotin)

Package: 50 µg
Store at: 4°C

Summary

Product Description	Biotin-conjugated Rabbit Polyclonal antibody recognizes CCL2 / MCP1
Tested Reactivity	Rat
Tested Application	ELISA, WB
Host	Rabbit
Clonality	Polyclonal
Isotype	IgG
Target Name	CCL2 / MCP1
Species	Rat
Immunogen	E.coli derived Recombinant Rat CCL2 / MCP1. (QPDVAVNAPLT CCYSFTGKMI PMSRLNYKR ITSSRCPEA VVFVTKLKRE ICADPNKEWV QKYIRKLDQN QVRSETTVFY KIASLRTSA PLNVNLTHKS EANASTLFST TTSSTSVEVT SMTEN)
Conjugation	Biotin
Alternate Names	MCP1; Monocyte chemotactic and activating factor; MCAF; Monocyte chemotactic protein 1; Monocyte secretory protein JE; HSMCR30; Small-inducible cytokine A2; HC11; SMC-CF; GDCF-2; SCYA2; C-C motif chemokine 2; Monocyte chemoattractant protein 1; MCP-1

Application Instructions

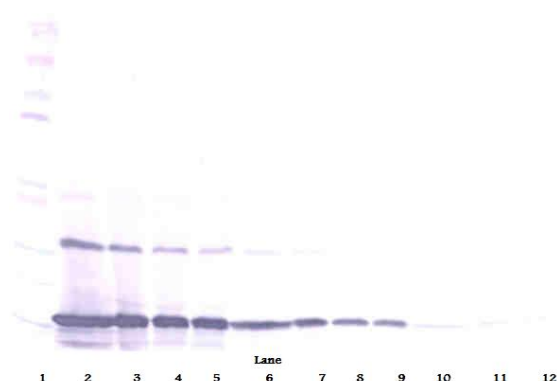
Application table	Application	Dilution
	ELISA	Direct: 0.25 - 1.0 µg/ml Sandwich: 0.25 - 1.0 µg/ml with (MCAF) as a capture antibody
	WB	0.1 - 0.2 µg/ml
Application Note	* The dilutions indicate recommended starting dilutions and the optimal dilutions or concentrations should be determined by the scientist.	

Properties

Form	Liquid
Purification	Purified by affinity chromatography.
Buffer	PBS (pH 7.2)
Concentration	1 mg/ml
Storage instruction	Aliquot and store in the dark at 2-8°C. Keep protected from prolonged exposure to light. Avoid repeated freeze/thaw cycles. Suggest spin the vial prior to opening. The antibody solution should be gently mixed before use.
Note	For laboratory research only, not for drug, diagnostic or other use.

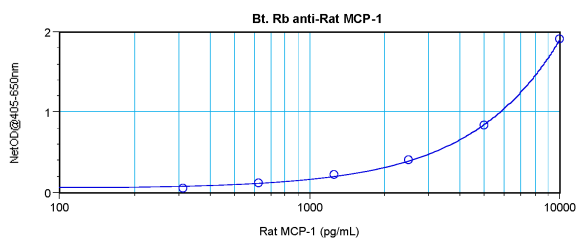
Database links	GeneID: 24770 Rat Swiss-port # P14844 Rat
Gene Symbol	Ccl2
Gene Full Name	chemokine (C-C motif) ligand 2
Background	<p>This gene is one of several cytokine genes clustered on the q-arm of chromosome 17. Chemokines are a superfamily of secreted proteins involved in immunoregulatory and inflammatory processes. The superfamily is divided into four subfamilies based on the arrangement of N-terminal cysteine residues of the mature peptide. This chemokine is a member of the CC subfamily which is characterized by two adjacent cysteine residues. This cytokine displays chemotactic activity for monocytes and basophils but not for neutrophils or eosinophils. It has been implicated in the pathogenesis of diseases characterized by monocytic infiltrates, like psoriasis, rheumatoid arthritis and atherosclerosis. It binds to chemokine receptors CCR2 and CCR4. [provided by RefSeq, Jul 2013]</p>
Function	<p>Chemotactic factor that attracts monocytes and basophils but not neutrophils or eosinophils. Augments monocyte anti-tumor activity. Has been implicated in the pathogenesis of diseases characterized by monocytic infiltrates, like psoriasis, rheumatoid arthritis or atherosclerosis. May be involved in the recruitment of monocytes into the arterial wall during the disease process of atherosclerosis. [UniProt]</p>
Highlight	<p>Related products: MCP1 antibodies; MCP1 ELISA Kits; MCP1 Duos / Panels; Anti-Rabbit IgG secondary antibodies; Related news: HMGB1 in inflammation Inflammatory Cytokines</p>
Calculated Mw	11 kDa
PTM	<p>Processing at the N-terminus can regulate receptor and target cell selectivity. Deletion of the N-terminal residue converts it from an activator of basophil to an eosinophil chemoattractant.</p>

Images



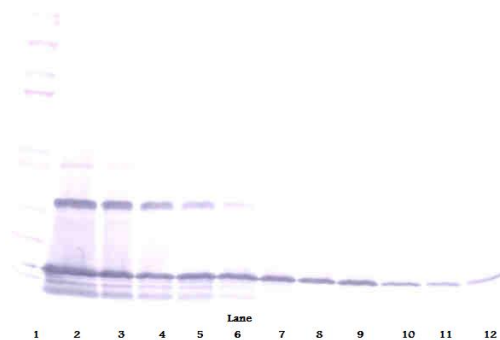
ARG56732 anti-CCL2 / MCP1 antibody (Biotin) WB image

Western blot: 250 - 0.24 ng of Rat MCP1 stained with ARG56732 anti-CCL2 / MCP1 antibody (Biotin), under reducing conditions.



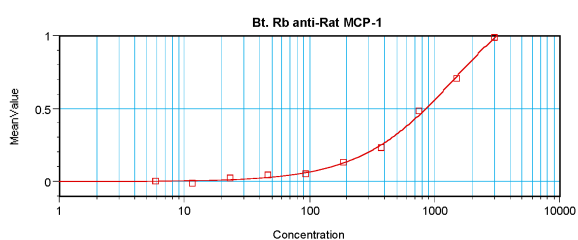
ARG56732 anti-CCL2 / MCP1 antibody (Biotin) standard curve image

Direct ELISA: ARG56732 anti-CCL2 / MCP1 antibody (Biotin) at 0.25 - 1.0 $\mu\text{g/ml}$ results of a typical standard run with optical density.



ARG56732 anti-CCL2 / MCP1 antibody (Biotin) WB image

Western blot: 250 - 0.24 ng of Rat MCP1 stained with ARG56732 anti-CCL2 / MCP1 antibody (Biotin), under non-reducing conditions.



ARG56732 anti-CCL2 / MCP1 antibody (Biotin) standard curve image

Sandwich ELISA: ARG56732 anti-CCL2 / MCP1 antibody (Biotin) as a detection antibody at 0.25 - 1.0 $\mu\text{g/ml}$ combined with ARG56618 anti-CCL2 / MCP1 antibody as a capture antibody. Results of a typical standard run with optical density.